

QUICK START GUIDE



ENGLISH

**SC2
STANDARD**



SCHUBERTH



SCHUBERTH SC2 APP

App functions: Bluetooth Intercom, Music, Device settings, Language settings

SCHUBERTH DEVICE MANAGER

The **SCHUBERTH Device Manager** allows you to **upgrade the firmware** and **configure its settings** directly from your PC. Download the **SCHUBERTH Device Manager** from oem.sena.com/schubert/.

PRODUCT FEATURES



Bluetooth® 5.0



Multi-Way Intercom



Music Sharing



User's Guide

This product comes with a Quick Start Guide, which is a basic version of the User's Guide. A FULL VERSION OF THE USER'S GUIDE CAN BE DOWNLOADED AT oem.sena.com/schuberth/.

APPROVED HELMET MODELS

SC2 Standard is approved according to ECE 22.06 for the following SCHUBERTH helmets:

Helmet model	Approval number
C5	0610510
E2	0610510
C5 CARBON	0610596
E2 CARBON	0610596
S3	0610579
J2	0610632

ECE 22.06 SA LABEL

approval mark

approval number

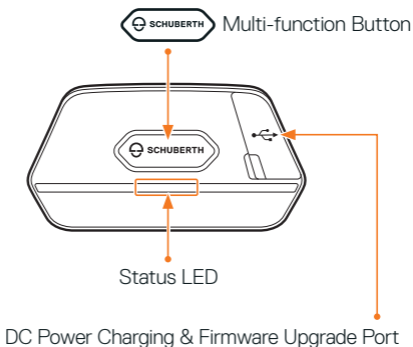
E₁₃ 06 10631-XXXX-
YYYY-SAcc

consecutive number

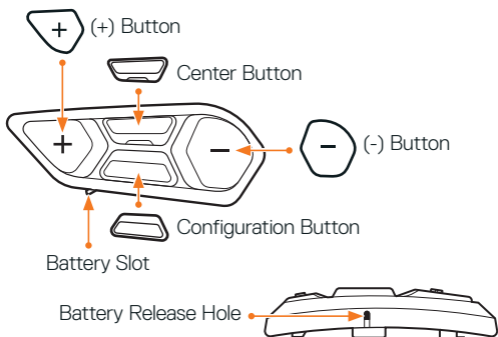
batch number

PRODUCT DETAILS

SC2 Standard



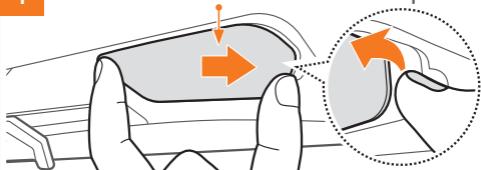
SC2 Standard Remote Control



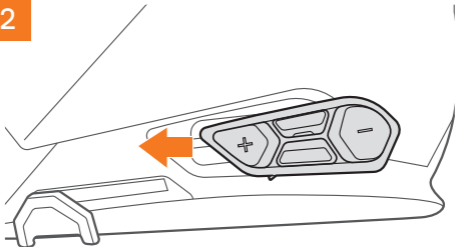
INSTALLING THE SC2 STANDARD REMOTE CONTROL

1

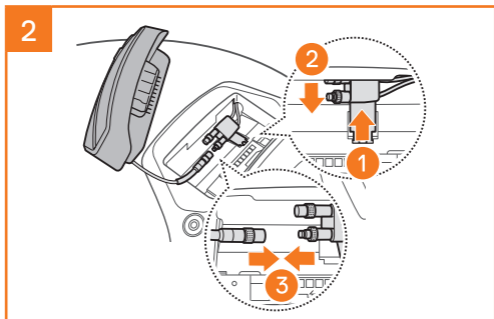
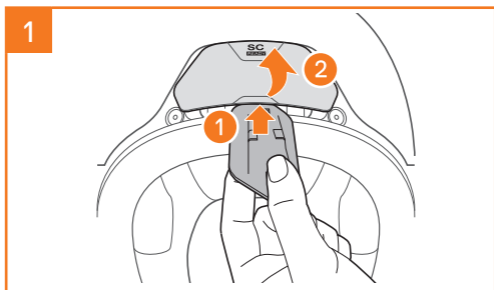
Cover for the SC2 Standard Remote Control



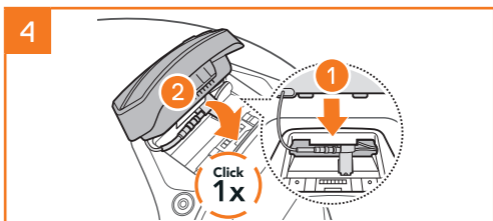
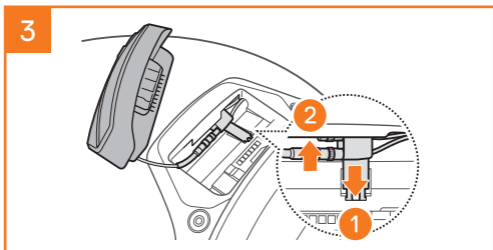
2



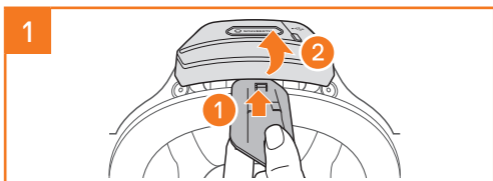
INSTALLING THE SC2 STANDARD

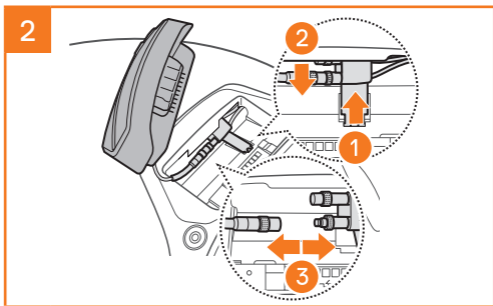


Note: The SC2 Standard is equipped with one antenna cable for connection to the helmet antenna for intercom.

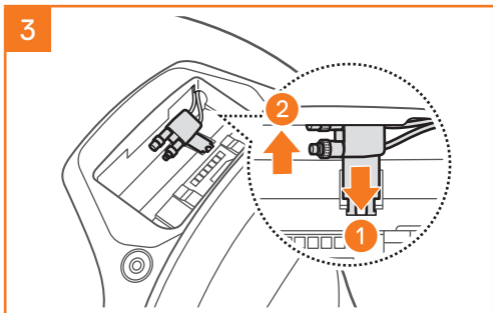


REMOVING THE SC2 STANDARD



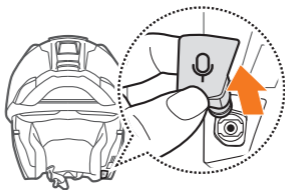


Note: When you need to un-plug the connector, please wiggle and pull it. It will help the connector connection be released more easily.



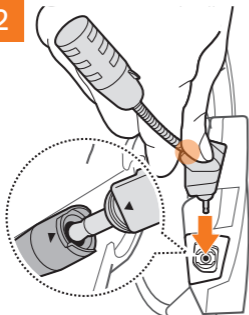
INSTALLING THE MICROPHONE

1



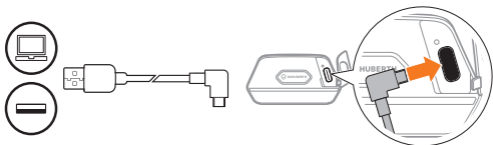
Note: The microphone is pre-installed on the S3.

2



Install the microphone by pressing firmly on the area marked with the orange circle.

CHARGING THE COMMUNICATION SYSTEM



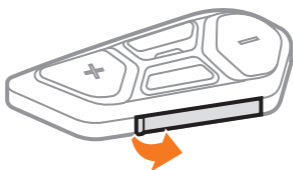
The communication system will be fully charged in about 2.5 hours. (The charging time may vary depending on the charging method.)

Note:

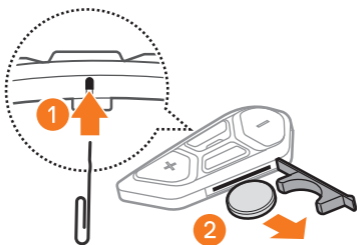
- ◆ Please make sure to take off your SC2 Standard-installed helmet while charging. The headset automatically turns off during charging.
- ◆ Any USB charger can be used with the headset if the charger is approved by either the FCC, CE, or IC.
- ◆ The **SC2 Standard** is compatible with 5 V/1 A input USB-charged devices only.

REPLACING THE BATTERY

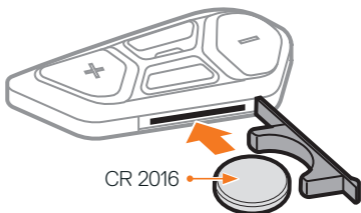
1



2



3



ICON LEGEND



Function = Button(s) to **tap** the specified number of times or **press and hold** for the specified amount of time.



“Hello”

Audible prompt

SC2 STANDARD

Powering On & Off



 *“Hello” or “Good Bye”*

To switch off the **SC2 Standard**, hold the **Multi-function Button** for **2 seconds** until you hear the double beep.

The remote control switches to sleep mode when you switch off the **SC2 Standard**.

To wake up the remote control after starting the **SC2 Standard**, tap **(+) Button** on the remote control.

SC2 STANDARD REMOTE CONTROL



Plastic Strip

Powering On



Powering Off



Note: The SC2 Standard and the SC2 Standard Remote Control come paired together. They will automatically connect to each other when the SC2 Standard and the SC2 Standard Remote Control are powered on.

Volume Up & Down



CHECKING THE BATTERY LEVEL

When switching on, the LED flashes red to indicate the charge level.

SC2 Standard



SC2 Standard Remote Control



PHONE PAIRING



Note: To pair your motorbike, please use phone pairing. To pair your phone with the SC2 Standard, please use second mobile phone pairing.

MOBILE PHONE

Answer a Call



End & Reject a Call



Call a Voice Assistant (Siri or Google Assistant)



1. Press the **Center Button** for **3 seconds** until you hear “Beep” to enable “Voice Assistant.”
2. Say: For example, “Make a phone call” or “Play music.”

MUSIC CONTROLS

Play & Pause



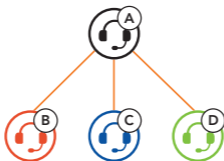
Track Forward & Backward



BLUETOOTH INTERCOM

Up to three other people can be paired with the headset (A) for **Bluetooth intercom** conversations.

Intercom Pairing




Note: If the **SC2 Standard** communication system is installed on full Carbon helmets, the maximum range of communication is limited to 400 meters in open terrain without obstacles, due to the electromagnetic interference shielding properties of the carbon fiber.

Pairing with Intercom B



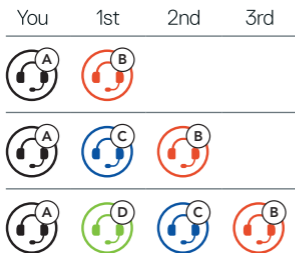
The **SC2 Standard** will automatically pair with a Sena headset.

 = Flashing blue LED on **SC2 Standard** (main unit) twice simultaneously confirms **intercoms are paired**.

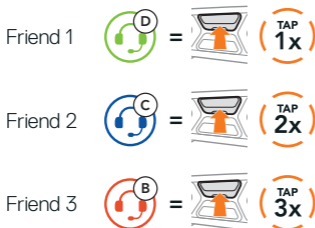
Note: Repeat the step above to pair with Intercom Friends C & D.

TWO-WAY INTERCOM

Last-Come, First-Served



Start & End with Intercom Friend 1-3



FM RADIO

FM Radio On & Off



 "FM on, ###" or "FM off"

Scan Stations & Stop Scanning



Seek Stations



Navigating Preset Stations



Note:

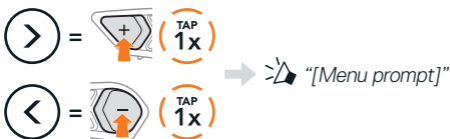
- You can preset FM stations with the **SCHUBERTH SC2 App** or the **SCHUBERTH Device Manager**.
- If the **SC2 Standard** is installed on full Carbon helmets the electromagnetic interference shielding properties of the carbon fiber shell can influence the clarity of FM signals.

CONFIGURATION MENU

Accessing the Headset Configuration Menu



Navigating Between Menu Options



Execute Menu Options



TROUBLESHOOTING

SC2 Standard Factory Reset












SC2 Standard Remote Control Factory Reset

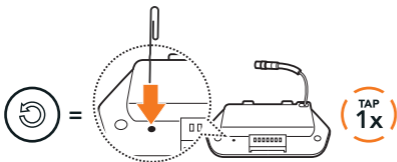


Remote Control Pairing

If you are using the **SC2 Standard Remote Control** other than the one included in the package, follow the procedure below to pair the **SC2 Standard** and the **SC2 Standard Remote Control**.

-  =   →  *"Remote control pairing"*
-  =   → 
3. The **SC2 Standard** will automatically connect with the **SC2 Standard Remote Control**. →  *"Remote control connected"*

SC2 Standard Fault Reset



Note: **Fault Reset** will not restore the communication system to factory default settings.

QUICK REFERENCE



Basic Operations

SC2 Standard power on & off



SC2 Standard Remote Control power on



SC2 Standard Remote Control power off



Volume up & down





Mobile Phone

Answer phone call



End & reject phone call



Call a voice assistant



Music

Play & pause



Track forward & backward





FM Radio

FM radio on & off



Select preset



Seek forward & backward



or



Scan up & stop scanning



Intercom

Intercom pairing



Start & end intercom



Producer: Sena Technologies Co., Ltd.
19, Heolleung-ro 569-gil, Gangnam-gu
Seoul 06376, Republic of Korea

Importer in Europe: SCHUBERTH GmbH
Stegelitzer Straße 12
D-39126 Magdeburg, Germany

Importer in US: SCHUBERTH North America
9920 Pacific Heights Blvd., Suite 150
San Diego, CA 92121

Subject to change. No liability for mistakes and errors.

WWW.SCHUBERTH.COM