

# QUICK START GUIDE



ENGLISH

# SC2



SCHUBERTH



## SCHUBERTH SC2 APP

App functions: Mesh Intercom, Bluetooth Intercom, Music, Device settings, Language settings

## SCHUBERTH DEVICE MANAGER

The **SCHUBERTH Device Manager** allows you to **upgrade the firmware** and **configure its settings** directly from your PC. Download the **SCHUBERTH Device Manager** from [oem.sena.com/schubert/](https://oem.sena.com/schubert/).

## PRODUCT FEATURES



Bluetooth® 5.0

---



Multi-Way Intercom

---



Audio Multitasking™

---



- ♦ Multi-Language Voice Command
- ♦ Compatible with Siri and Google Assistant

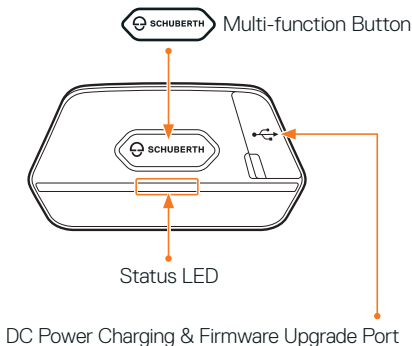


User's Guide

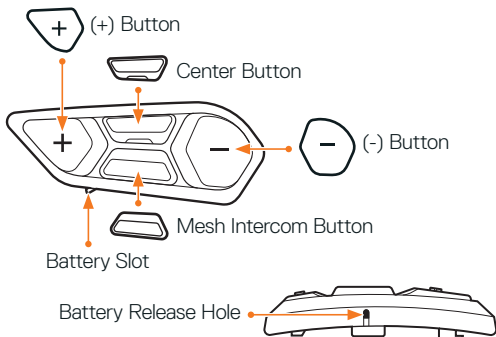
This product comes with a Quick Start Guide, which is a basic version of the User's Guide. A FULL VERSION OF THE USER'S GUIDE CAN BE DOWNLOADED AT [oem.sena.com/schubertth/](http://oem.sena.com/schubertth/).

## PRODUCT DETAILS

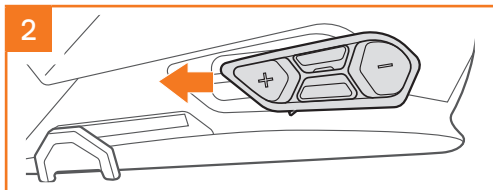
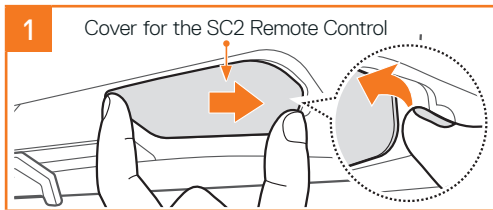
### SC2



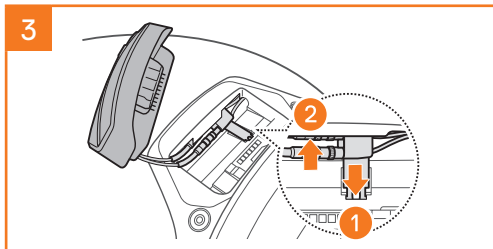
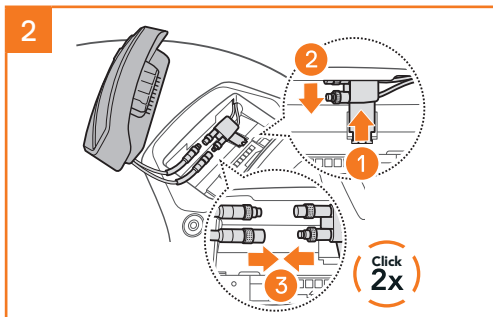
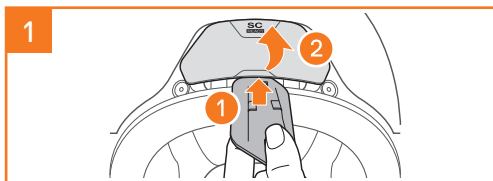
## SC2 Remote Control



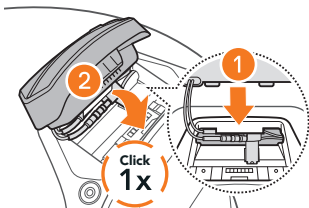
## INSTALLING THE SC2 REMOTE CONTROL



# INSTALLING THE SC2

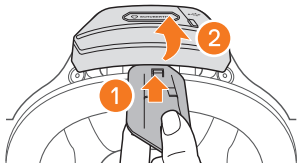


4

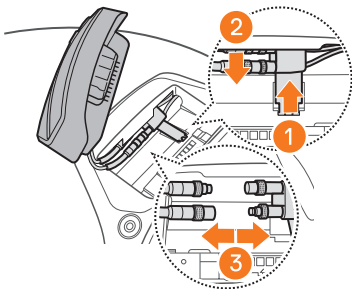


## REMOVING THE SC2

1

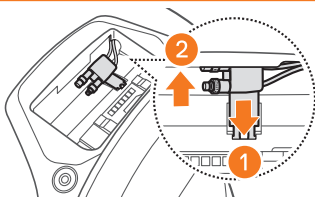


2



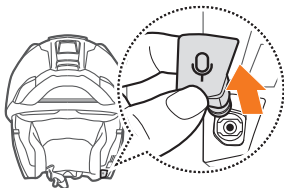
**Note:** When you need to un-plug the connectors, please wiggle and pull them. It will help the connector connection be released more easily.

3

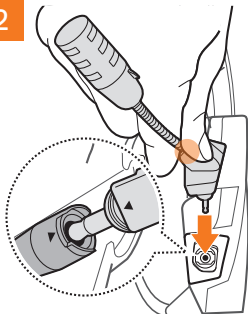


## INSTALLING THE MICROPHONE (THE MICROPHONE IS PRE-INSTALLED ON THE S3)

1



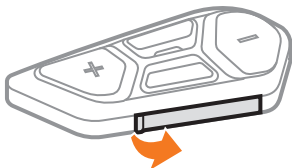
2



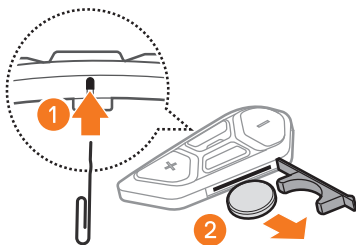
Install the microphone by pressing firmly on the area marked with the orange circle.

# REPLACING THE BATTERY

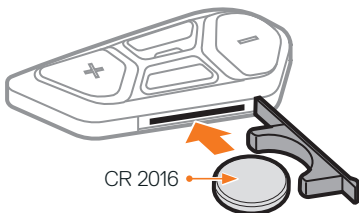
1



2



3





## ICON LEGEND



**Function** = Button(s) to **tap** the specified number of times or **press and hold** for the specified amount of time.



*"Hello"*

**Audible prompt**

## SC2

### Powering On & Off



*"Hello" or "Good Bye"*

To switch off the **SC2**, hold the **Multi-function Button** for **2 seconds** until you hear the double beep.

The remote control switches to sleep mode when you switch off the **SC2**.

To wake up the remote control after starting the **SC2**, tap **(+)** **Button** on the remote control.

## SC2 REMOTE CONTROL



Plastic Strip

### Powering On



## Powering Off



**Note:** The SC2 and the SC2 Remote Control come paired together. They will automatically connect to each other when the SC2 and the SC2 Remote Control are powered on.

## Volume Up & Down



## CHECKING THE BATTERY LEVEL

When switching on, the LED flashes red to indicate the charge level.

### SC2



### SC2 Remote Control




# PHONE PAIRING

1.  =   →  "Configuration menu"

2.  =   →  "Phone pairing"



3.  → PIN = 

0	0	0	0
---	---	---	---

# MOBILE PHONE

Answer a Call

 =  

End & Reject a Call

 =  

# SIRI AND GOOGLE ASSISTANT

Activate the Siri or Google Assistant installed on Your Smartphone



## MUSIC CONTROLS

Play & Pause



Track Forward & Backward



## MESH INTERCOM™

When **Mesh Intercom** is enabled, the **SC2** will automatically connect to nearby all other Mesh users and allow them to talk to each other by pressing the **Mesh Intercom Button**.

**Note:** If the **SC2** communication system is installed on full Carbon helmets, the maximum range of communication is limited to 400 meters in open terrain without obstacles, due to the electromagnetic interference shielding properties of the carbon fiber.

### Mesh Intercom On & Off



 *"Mesh intercom on,  
Open Mesh, Channel 1" or "Mesh intercom off"*

## OPEN MESH™

When **Mesh Intercom** is enabled, the headset will be in **Open Mesh (default: channel 1)** initially. Users can freely communicate with each other in the same **Open Mesh** channel.

## CHANNEL SETTING (DEFAULT: CHANNEL 1)

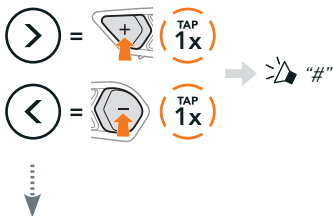
If the **Open Mesh** communication experiences interference because other groups are also using **channel 1 (default)**, change the channel. You can select from channels 1 to 9.

### Enter into the Channel Setting



### Navigate between Channels

(1 → 2 → ... → 8 → 9 → Exit → 1 → ...)



### Save the Channel



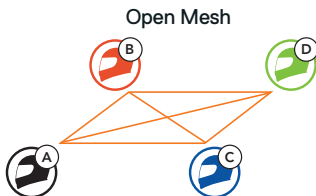
**Note:** To exit the **Channel Setting**, tap the **(+) Button** or **(-) Button** until you hear a voice prompt, "Exit", and tap the **Center Button**.

# GROUP MESH™

**Group Mesh** is a closed group intercom function that allows users to join, leave, or rejoin a group intercom conversation without pairing each headset. Up to 24 users can all be connected in each private group.

## CREATING A GROUP MESH

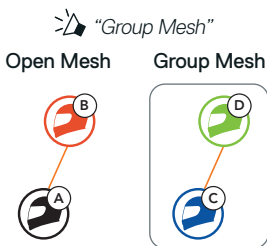
Creating a **Group Mesh** requires **two or more Open Mesh users**.



1. **You (C)** and **your friend (D)** enter into **Mesh Grouping** to create a **Group Mesh**.

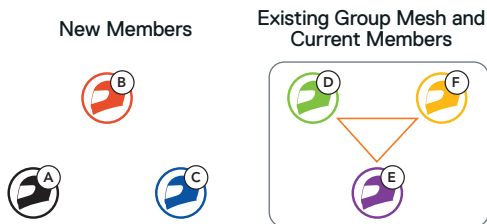


2. The headsets complete **Mesh Grouping** and automatically switch from **Open Mesh** to **Group Mesh**.



## JOINING AN EXISTING GROUP MESH

One of the members in an **Existing Group Mesh** can allow new members in **Open Mesh** to join the **Existing Group Mesh**.



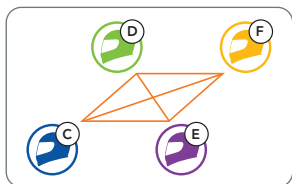


1. One of the current members (E) and a new member (you [C]) enter into **Mesh Grouping** to join the Existing Group Mesh.



2. The headsets complete **Mesh Grouping**. The new members will hear a voice prompt as their headsets automatically switch from **Open Mesh** to **Group Mesh**.

🔊 "Group Mesh"



## RESET MESH

If a headset in an **Open Mesh** or **Group Mesh** resets the **Mesh**, it will automatically return to **Open Mesh** (default: channel 1).



## ENABLE & DISABLE MIC (DEFAULT: ENABLE)

Users can enable/disable the microphone when communicating in a **Mesh Intercom**.

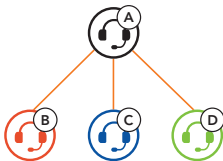


 "Mic on" or "Mic off"

## BLUETOOTH INTERCOM

Up to three other people can be paired with the your headset **(A)** for **Bluetooth intercom** conversations.

### Intercom Pairing

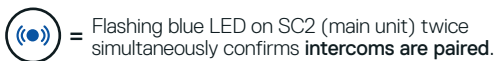


**Note:** If the **SC2** communication system is installed on full Carbon helmets, the maximum range of communication is limited to 400 meters in open terrain without obstacles, due to the electromagnetic interference shielding properties of the carbon fiber.

## Pairing with Intercom B



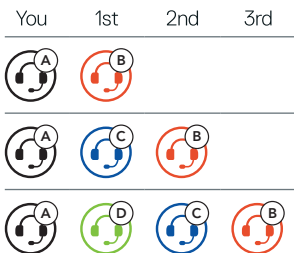
The **SC2** will automatically pair with a Sena headset.



**Note:** Repeat the step above to pair with Intercom Friends C & D.

## TWO-WAY INTERCOM

### Last-Come, First-Served



## Start & End with Intercom Friend 1-3

Friend 1  =  

Friend 2  =  

Friend 3  =  

## FM RADIO

### FM Radio On & Off



 "FM on, ###" or "FM off"

### Scan Stations & Stop Scanning



### Seek Stations



## Navigating Preset Stations



### Note:

- ♦ You can preset FM stations with the **SCHUBERTH SC2 App** or the **SCHUBERTH Device Manager**.
- ♦ If the **SC2** is installed on full Carbon helmets the electromagnetic interference shielding properties of the carbon fiber shell can influence the clarity of FM signals.

## VOICE COMMAND

The Voice Command of the **SC2** allows you to operate certain operations by simply using your voice.

Turn on Mesh Intercom →  *"Hey Sena, Mesh On"*

Play Music →  *"Hey Sena, Play Music"*

Answer an Incoming Call →  *"Answer"*

**Note:** For detailed information including a full list of voice commands, refer to the User's Guide.

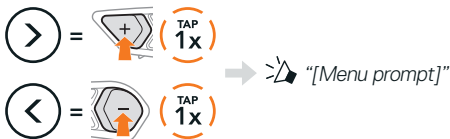


## CONFIGURATION MENU

### Accessing the Headset Configuration Menu



### Navigating Between Menu Options



### Execute Menu Options



## TROUBLESHOOTING

### SC2 Factory Reset












### SC2 Remote Control Factory Reset

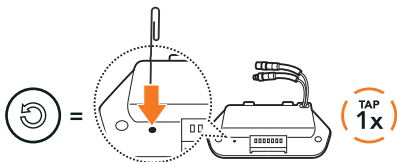


## Remote Control Pairing

If you are using the **SC2 Remote Control** other than the one included in the package, follow the procedure below to pair the **SC2** and the **SC2 Remote Control**.

1.  =   →  "Remote control pairing"
2.  =   → 
3. The **SC2** will automatically connect with the **SC2 Remote Control**. →  "Remote control connected"

## SC2 Fault Reset



**Note:** **Fault Reset** will not restore the headset to factory default settings.

# QUICK REFERENCE



## Basic Operations

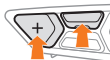
SC2 power on & off



SC2 Remote Control power on



SC2 Remote Control power off



Volume up & down



or



## Mobile Phone

Answer phone call



End & reject phone call







Siri and Google Assistant

Activate the Siri or Google Assistant



Music

Play & pause



Track forward & backward



or



FM radio on & off



Select preset



FM Radio

Seek forward & backward



or



Scan up & stop scanning





Mesh  
Intercom™

## Mesh Intercom on & off



## Channel setting



## Mesh Grouping



## Reset Mesh



## Enable & disable mic



Intercom

## Intercom pairing



## Start & end intercom



**Producer:** Sena Technologies Co., Ltd.  
19, Heolleung-ro 569-gil, Gangnam-gu  
Seoul 06376, Republic of Korea

**Importer in Europe:** SCHUBERTH GmbH  
Stegelitzer Straße 12  
D-39126 Magdeburg, Germany

**Importer in US:** SCHUBERTH North America  
9920 Pacific Heights Blvd., Suite 150  
San Diego, CA 92121

*Subject to change. No liability for mistakes and errors.*

**WWW.SCHUBERTH.COM**