

QUICK START GUIDE



ENGLISH

SC2



SCHUBERTH



SCHUBERTH SC2 APP

App functions: Mesh Intercom, Bluetooth Intercom, Music, Device settings, Language settings

SCHUBERTH DEVICE MANAGER

The **SCHUBERTH Device Manager** allows you to **upgrade the firmware** and **configure its settings** directly from your PC. Download the **SCHUBERTH Device Manager** from oem.sena.com/schubertth/.

PRODUCT FEATURES



Bluetooth® 5.0



Multi-Way Intercom



Audio Multitasking™



- ♦ Multi-Language Voice Command
- ♦ Compatible with Siri and Google Assistant

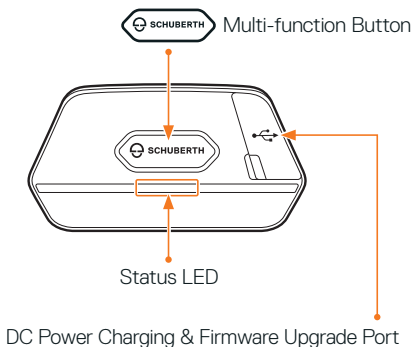


User's Guide

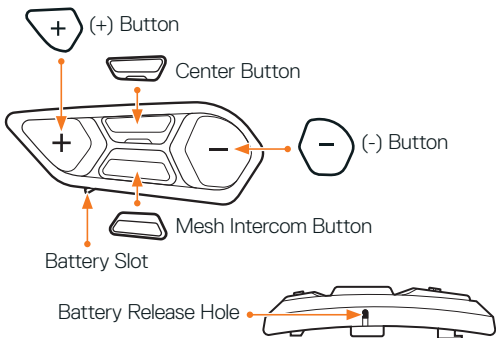
This product comes with a Quick Start Guide, which is a basic version of the User's Guide. A FULL VERSION OF THE USER'S GUIDE CAN BE DOWNLOADED AT oem.sena.com/schubertth/.

PRODUCT DETAILS

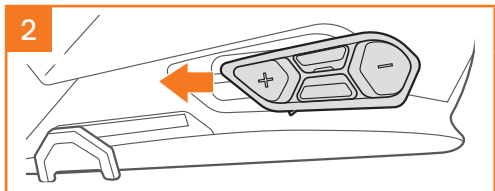
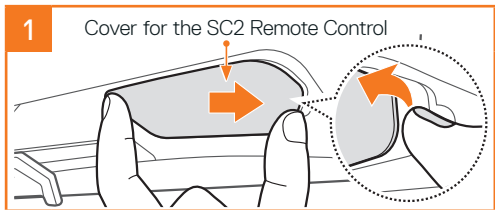
SC2



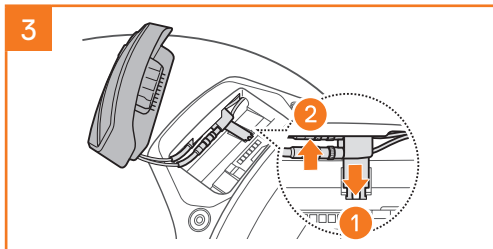
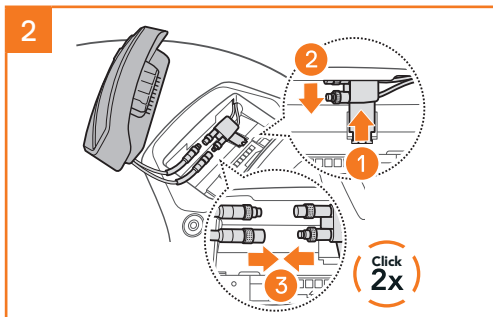
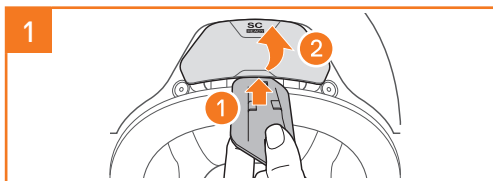
SC2 Remote Control



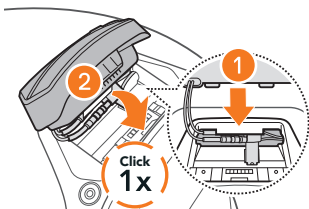
INSTALLING THE SC2 REMOTE CONTROL



INSTALLING THE SC2

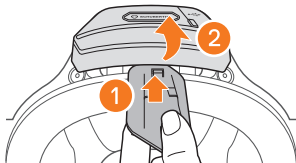


4

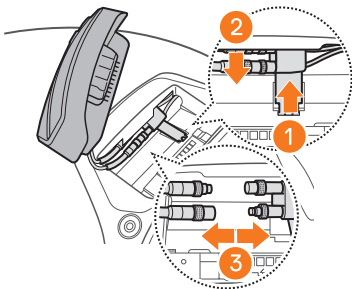


REMOVING THE SC2

1

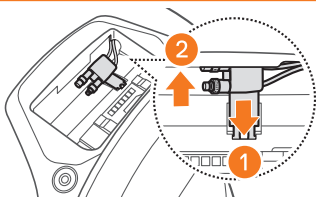


2



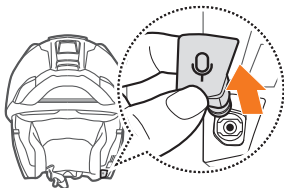
Note: When you need to un-plug the connectors, please wiggle and pull them. It will help the connector connection be released more easily.

3

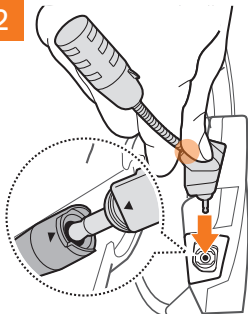


INSTALLING THE MICROPHONE (THE MICROPHONE IS PRE-INSTALLED ON THE S3)

1



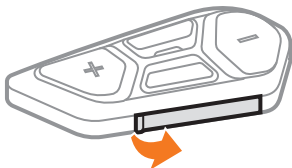
2



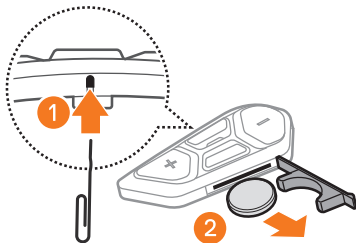
Install the microphone by pressing firmly on the area marked with the orange circle.

REPLACING THE BATTERY

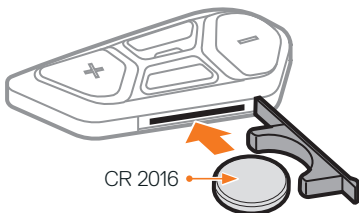
1



2



3



ICON LEGEND



Function = Button(s) to **tap** the specified number of times or **press and hold** for the specified amount of time.



"Hello"

Audible prompt

SC2

Powering On & Off



"Hello" or "Good Bye"

To switch off the **SC2**, hold the **Multi-function Button** for **2 seconds** until you hear the double beep.

The remote control switches to sleep mode when you switch off the **SC2**.

To wake up the remote control after starting the **SC2**, tap **(+)** **Button** on the remote control.

SC2 REMOTE CONTROL



Plastic Strip

Powering On



Powering Off



Note: The SC2 and the SC2 Remote Control come paired together. They will automatically connect to each other when the SC2 and the SC2 Remote Control are powered on.

Volume Up & Down



CHECKING THE BATTERY LEVEL

When switching on, the LED flashes red to indicate the charge level.

SC2



SC2 Remote Control



PHONE PAIRING

1.  =   →  "Configuration menu"

2.  =   →  "Phone pairing"

3.  → PIN =

0	0	0	0
---	---	---	---

MOBILE PHONE

Answer a Call

 =  

End & Reject a Call

 =  

SIRI AND GOOGLE ASSISTANT

Activate the Siri or Google Assistant installed on Your Smartphone



MUSIC CONTROLS

Play & Pause



Track Forward & Backward



MESH INTERCOM™

When **Mesh Intercom** is enabled, the **SC2** will automatically connect to nearby all other Mesh users and allow them to talk to each other by pressing the **Mesh Intercom Button**.

Mesh Intercom On & Off



 *"Mesh intercom on,
Open Mesh, Channel 1" or "Mesh intercom off"*

OPEN MESH™

When **Mesh Intercom** is enabled, the headset will be in **Open Mesh (default: channel 1)** initially. Users can freely communicate with each other in the same **Open Mesh** channel.

CHANNEL SETTING (DEFAULT: CHANNEL 1)

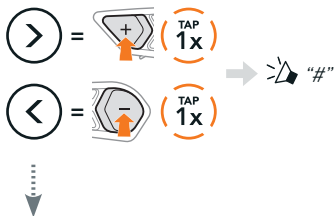
If the **Open Mesh** communication experiences interference because other groups are also using **channel 1 (default)**, change the channel. You can select from channels 1 to 9.

Enter into the Channel Setting



Navigate between Channels

(1 → 2 → ... → 8 → 9 → Exit → 1 → ...)



Save the Channel



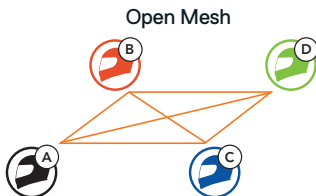
Note: To exit the **Channel Setting**, tap the **(+) Button** or **(-) Button** until you hear a voice prompt, "Exit", and tap the **Center Button**.

GROUP MESH™

Group Mesh is a closed group intercom function that allows users to join, leave, or rejoin a group intercom conversation without pairing each headset. Up to 24 users can all be connected in each private group.

CREATING A GROUP MESH

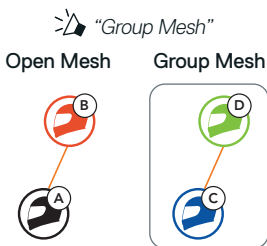
Creating a **Group Mesh** requires **two or more Open Mesh users**.



1. **You (C)** and **your friend (D)** enter into **Mesh Grouping** to create a **Group Mesh**.

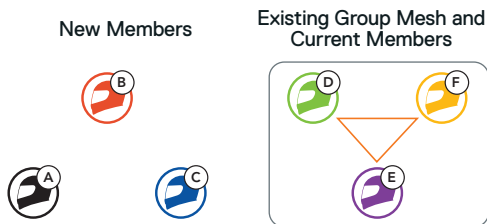


2. The headsets complete **Mesh Grouping** and automatically switch from **Open Mesh** to **Group Mesh**.



JOINING AN EXISTING GROUP MESH

One of the members in an **Existing Group Mesh** can allow new members in **Open Mesh** to join the **Existing Group Mesh**.

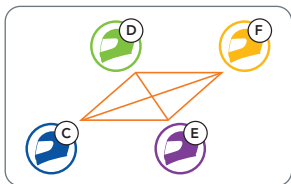


1. One of the current members (E) and a new member (you [C]) enter into **Mesh Grouping** to join the Existing Group Mesh.



2. The headsets complete **Mesh Grouping**. The new members will hear a voice prompt as their headsets automatically switch from **Open Mesh** to **Group Mesh**.

 "Group Mesh"



RESET MESH


If a headset in an **Open Mesh** or **Group Mesh** resets the **Mesh**, it will automatically return to **Open Mesh** (default: channel 1).



ENABLE & DISABLE MIC (DEFAULT: ENABLE)

Users can enable/disable the microphone when communicating in a **Mesh Intercom**.

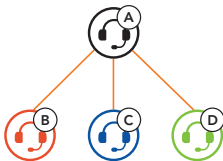


 "Mic on" or "Mic off"

BLUETOOTH INTERCOM

Up to three other people can be paired with the your headset (**A**) for **Bluetooth intercom** conversations.

Intercom Pairing



Pairing with Intercom B



 The **SC2** will automatically pair with a Sena headset.

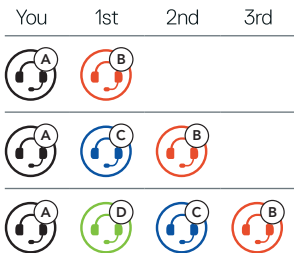


= Flashing blue LED on SC2 (main unit) twice simultaneously confirms **intercoms are paired**.

Note: Repeat the step above to pair with Intercom Friends C & D.

TWO-WAY INTERCOM

Last-Come, First-Served



Start & End with Intercom Friend 1-3

Friend 1 = (TAP 1x)

Friend 2 = (TAP 2x)

Friend 3 = (TAP 3x)

FM RADIO

FM Radio On & Off



 "FM on, ###" or "FM off"

Scan Stations & Stop Scanning



Seek Stations



Navigating Preset Stations



Note: You can preset FM stations with the **SCHUBERTH SC2 App** or the **SCHUBERTH Device Manager**.

VOICE COMMAND

The Voice Command of the **SC2** allows you to operate certain operations by simply using your voice.

Turn on Mesh Intercom →  *"Hey Sena, Mesh On"*

Play Music →  *"Hey Sena, Play Music"*

Answer an Incoming Call →  *"Answer"*

Note: For detailed information including a full list of voice commands, refer to the User's Guide.

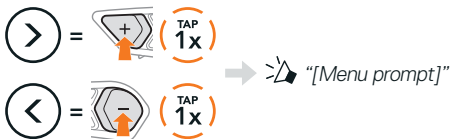


CONFIGURATION MENU

Accessing the Headset Configuration Menu



Navigating Between Menu Options



Execute Menu Options



TROUBLESHOOTING

SC2 Factory Reset












SC2 Remote Control Factory Reset

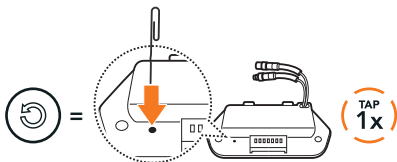


Remote Control Pairing

If you are using the **SC2 Remote Control** other than the one included in the package, follow the procedure below to pair the **SC2** and the **SC2 Remote Control**.

1.  =   →  *"Remote control pairing"*
2.  =   → 
3. The **SC2** will automatically connect with the **SC2 Remote Control**. →  *"Remote control connected"*

SC2 Fault Reset



Note: **Fault Reset** will not restore the headset to factory default settings.

QUICK REFERENCE



Basic Operations

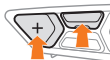
SC2 power on & off



SC2 Remote Control power on



SC2 Remote Control power off



Volume up & down



or



Mobile Phone

Answer phone call



End & reject phone call





Siri and Google Assistant

Activate the Siri or Google Assistant



Music

Play & pause



Track forward & backward



or



FM radio on & off



Select preset



FM Radio

Seek forward & backward



or



Scan up & stop scanning





Mesh
Intercom™

Mesh Intercom on & off



Channel setting



Mesh Grouping



Reset Mesh



Enable & disable mic



Intercom

Intercom pairing



Start & end intercom



Producer: Sena Technologies, Inc
19, Heolleung-ro 569-gil, Gangnam-gu
Seoul 06376, Republic of Korea

Importer in Europe: SCHUBERTH GmbH
Stegelitzer Straße 12
D-39126 Magdeburg, Germany

Importer in US: SCHUBERTH North America
9920 Pacific Heights Blvd., Suite 150
San Diego, CA 92121

Subject to change. No liability for mistakes and errors.

WWW.SCHUBERTH.COM