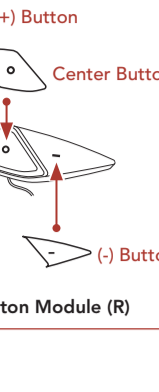


HEMLINK

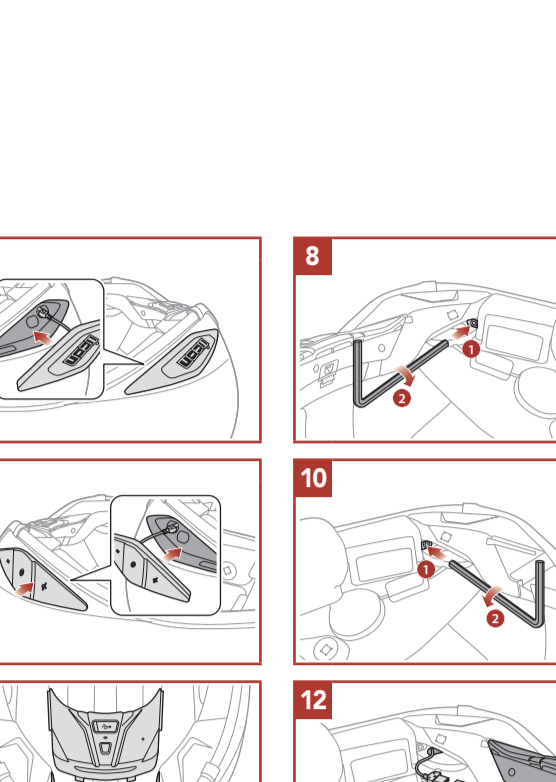
BLUETOOTH COMMUNICATION SYSTEM



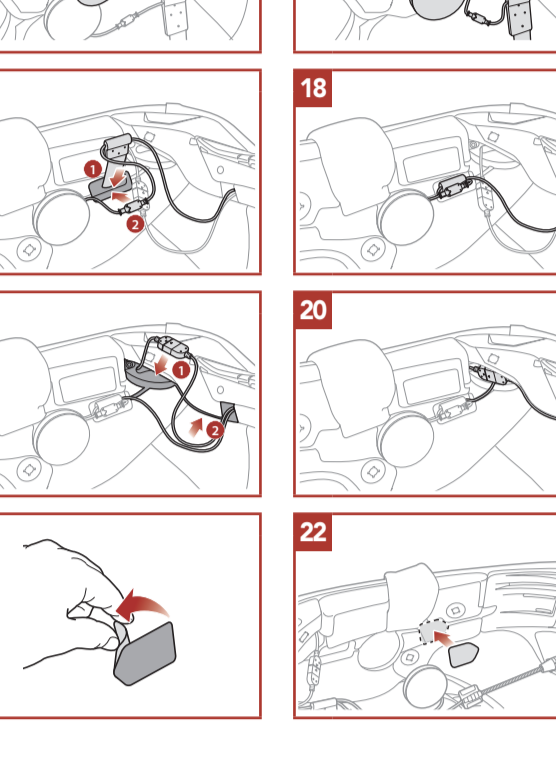
QUICK START GUIDE ENGLISH / 1.0.0

Downloadable Sena Software

Download the **Sena Motorcycles App** on **Google Play Store** or **App Store**.

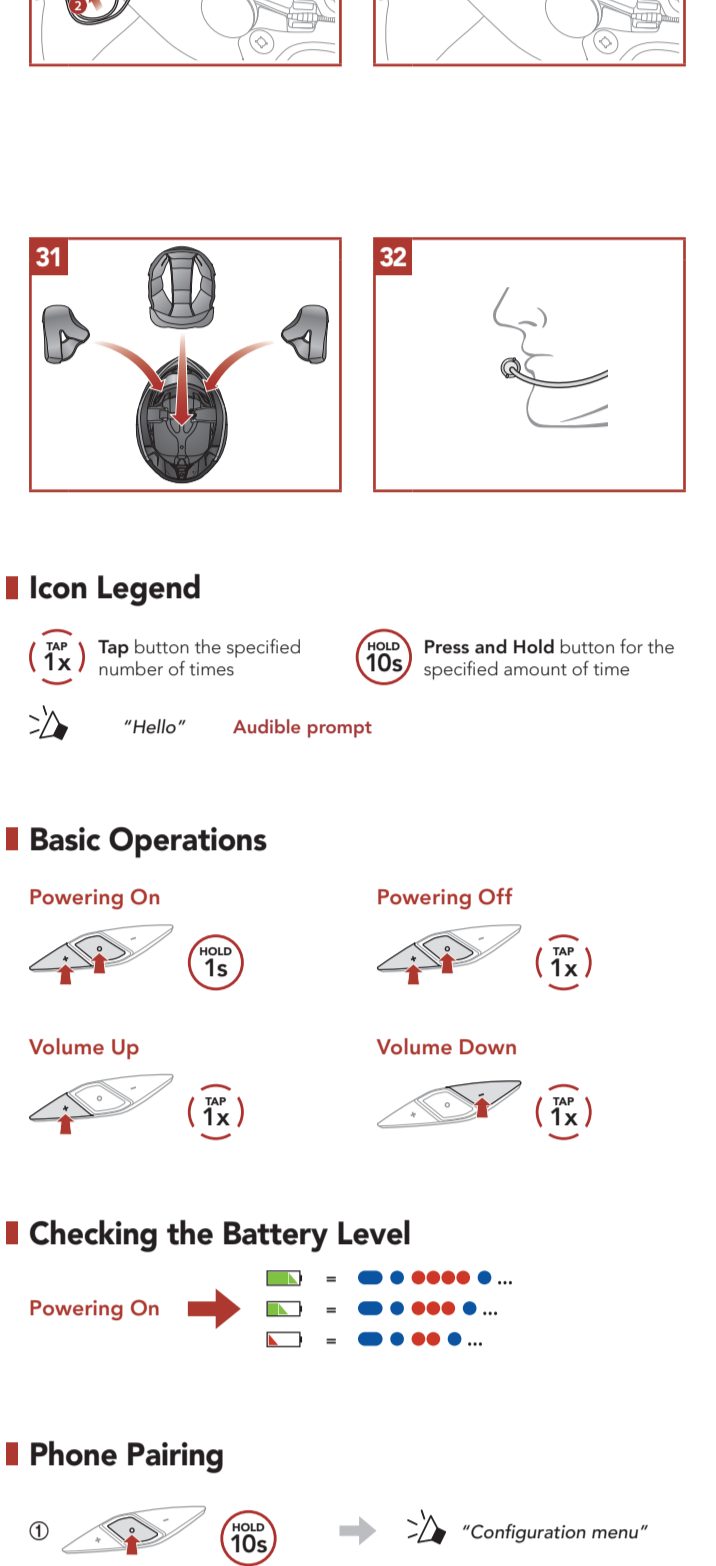


Download the following items at oem.sena.com/icon.



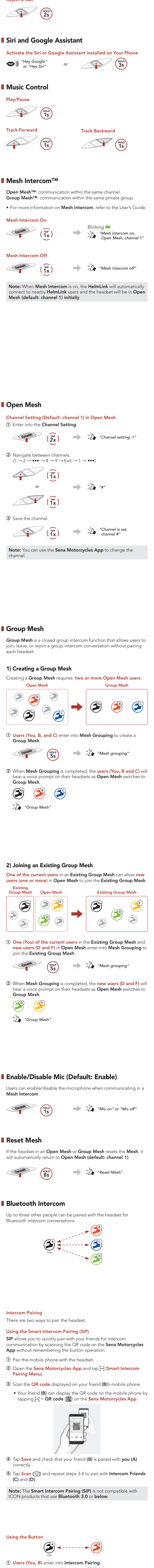
ICON Motosparts

Product Details

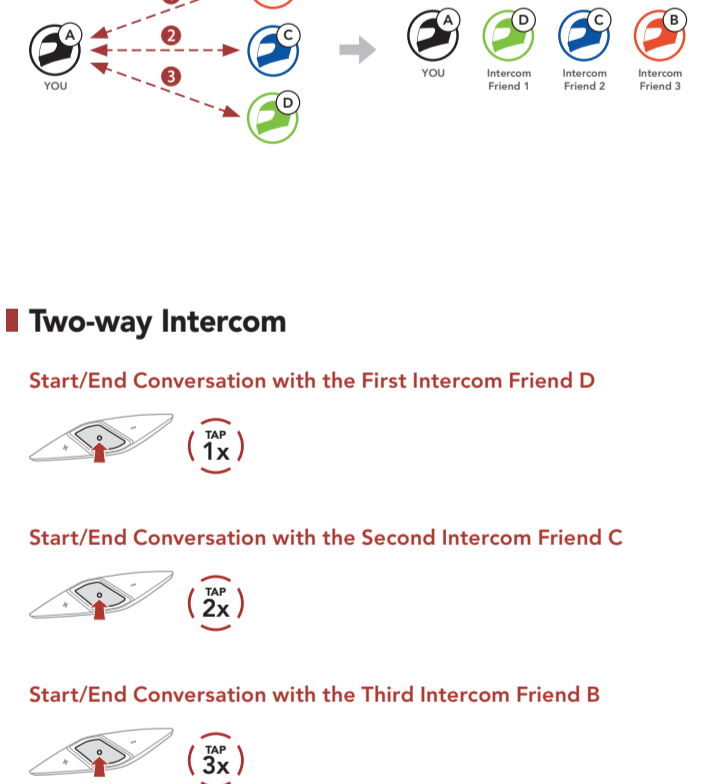


Installation

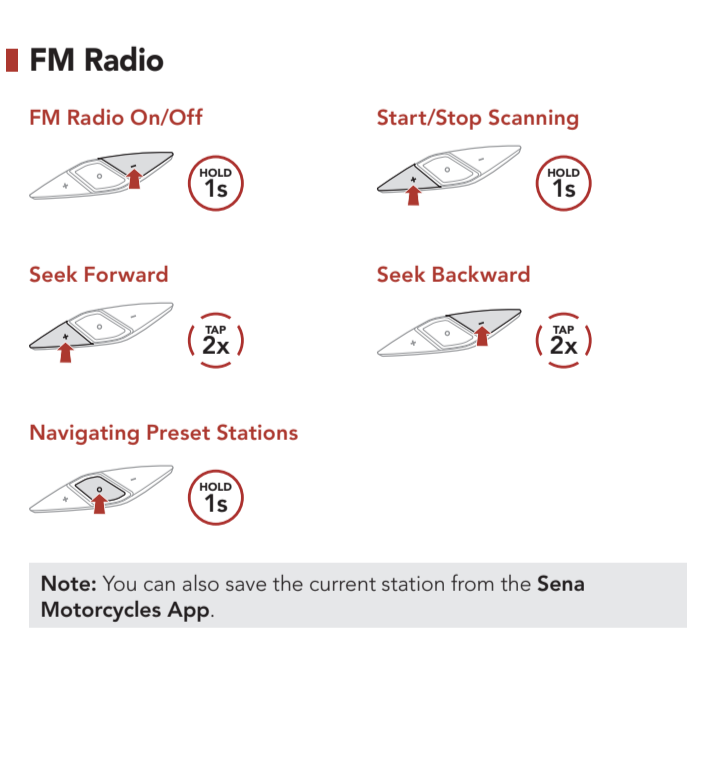
For more information about installation, refer to the User's Guide.



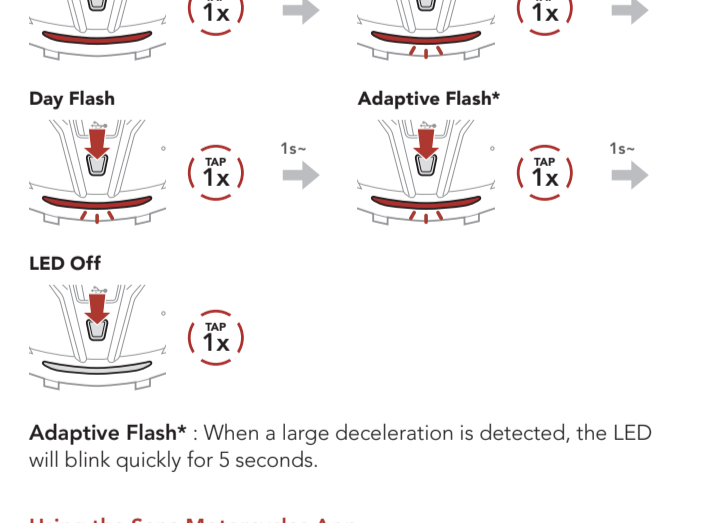
Icon Legend



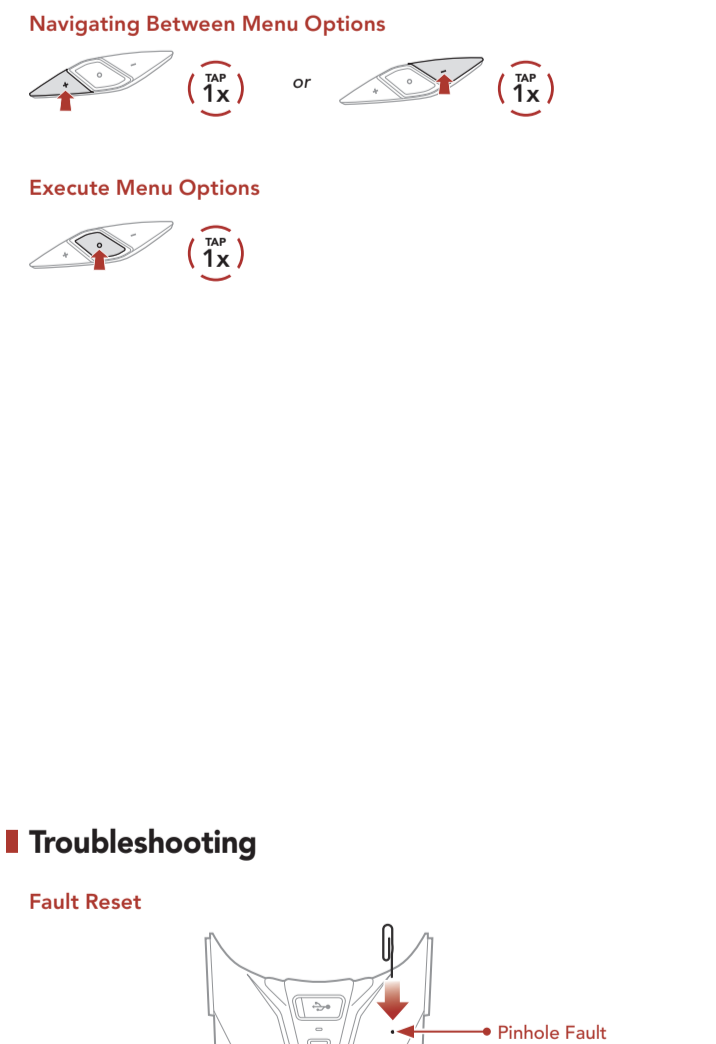
Basic Operations



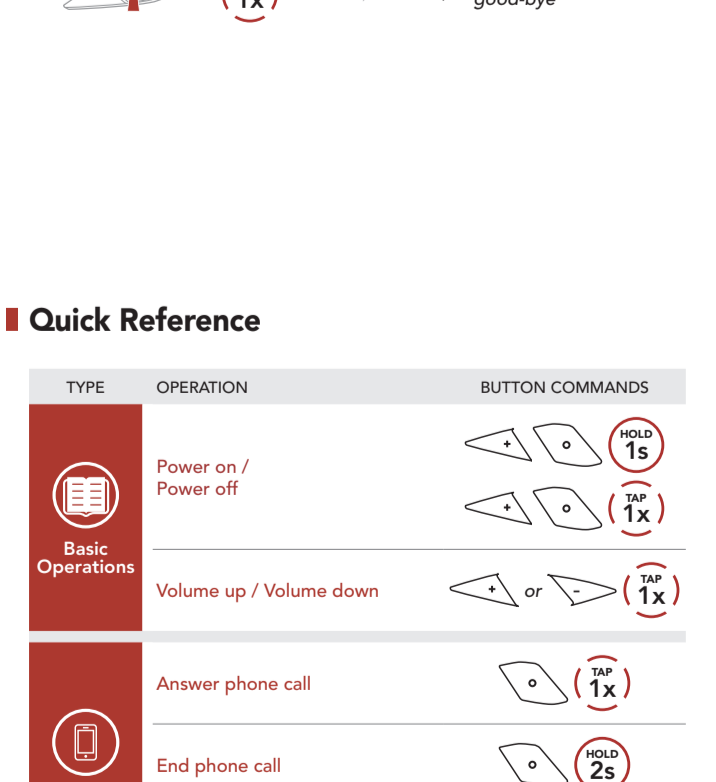
Checking the Battery Level



Phone Pairing

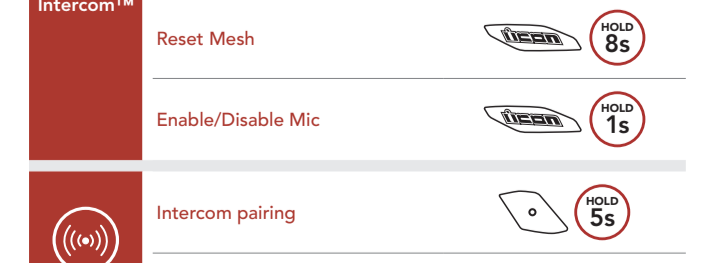


Using the Phone

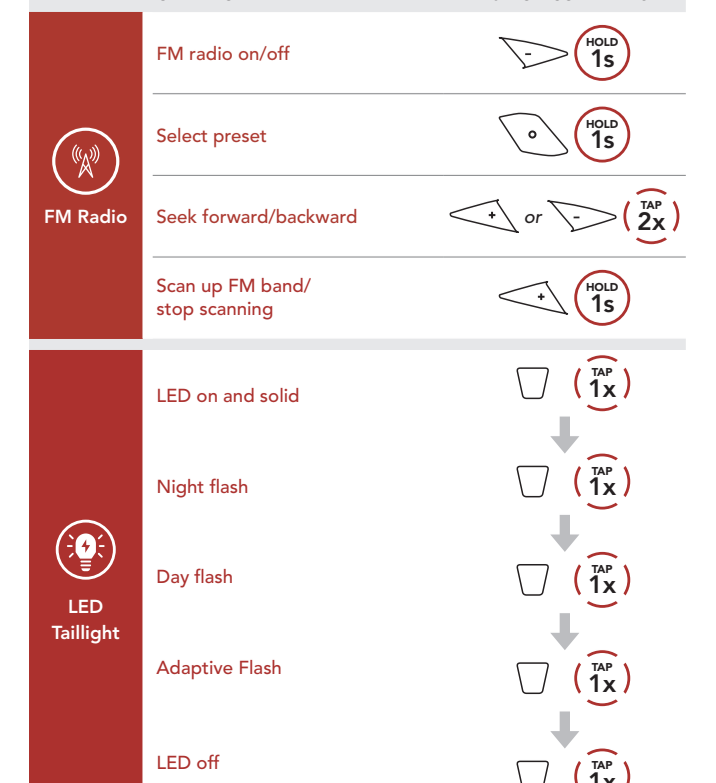


Siri and Google Assistant

Activate the Siri or Google Assistant Installed on Your Phone



Music Control



Mesh Intercom™

Open Mesh™ communication within the same channel. Group Mesh™ communication within the same private group.

For more information on Mesh Intercom, refer to the User's Guide.

Note: When Mesh Intercom is on, the HelmLink will automatically connect to nearby HelmLink users and the headset will be in Open Mesh (default: channel 1) initially.

Open Mesh

Channel Setting (Default: channel 1) in Open Mesh

Note: You can use the Sena Motorcycles App to change the channel.

Group Mesh

Group Mesh is a closed group intercom function that allows users to join, leave, or rejoin a group intercom conversation without pairing each headset.

1) Creating a Group Mesh

Creating a Group Mesh requires two or more Open Mesh users.

2) Joining an Existing Group Mesh

One of the current users in an Existing Group Mesh can allow new users (one or more) in Open Mesh to join the Existing Group Mesh.

Enable/Disable Mic (Default: Enable)

Users can enable/disable the microphone when communicating in a Mesh Intercom.

Reset Mesh

If the headset in an Open Mesh or Group Mesh resets the Mesh, it will automatically return to Open Mesh (default: channel 1).

Bluetooth Intercom

Up to three other people can be paired with the headset for Bluetooth intercom conversations.

Intercom Pairing

There are two ways to pair the headset.

Using the Smart Intercom Pairing (SIP)

SIP allows you to quickly pair with your friends for intercom communication by scanning the QR code on the Sena Motorcycles App without remembering the button operation.

1. Pair the mobile phone with the headset.

2. Open the Sena Motorcycles App and tap Smart Intercom Pairing Menu.

3. Scan the QR code displayed on your friend (B)'s mobile phone.

Your friend (B) can display the QR code on the mobile phone by tapping QR code on the Sena Motorcycles App.

4. Tap Save and check that your friend (B) is paired with you (A) correctly.

5. Tap Scan (C) and repeat steps 3-4 to pair with Intercom Friends (C) and (D).

Note: The Smart Intercom Pairing (SIP) is not compatible with ICON products that use Bluetooth 3.0 or below.

Using the Button

1. Users (You, B) enter into Intercom Pairing.

2. The two headsets (A and B) will be automatically paired.

3. Repeat the steps above to pair with other headsets (C and D).

Last-Come, First-Served

If the headset has multiple paired headsets for intercom conversations, the last paired headset is set as the First Intercom Friend.

Intercom Pairing Order: You, Intercom Friend 1, Intercom Friend 2, Intercom Friend 3

Last-Come, First-Served: You, Intercom Friend 3, Intercom Friend 2, Intercom Friend 1

Two-way Intercom

Start/End Conversation with the First Intercom Friend D

Start/End Conversation with the Second Intercom Friend C

Start/End Conversation with the Third Intercom Friend B

Tap 1x, Tap 2x, Tap 3x

FM Radio

FM Radio On/Off (Hold 1s), Start/Stop Scanning (Hold 1s)

Seek Forward (Tap 2x), Seek Backward (Tap 2x)

Navigating Preset Stations (Hold 1s)

Note: You can also save the current station from the Sena Motorcycles App.

LED Taillight

Using the Button: Do not tap the button continuously.

LED On and Solid (Tap 1x), Night Flash (Tap 1x)

Day Flash (Tap 1x), Adaptive Flash* (Tap 1x)

LED Off (Tap 1x)

Adaptive Flash*: When a large deceleration is detected, the LED will blink quickly for 5 seconds.

Using the Sena Motorcycles App: You can control the LED Taillight through the Sena Motorcycles App.

Configuration Menu

Accessing the Configuration Menu (Hold 10s)

Navigating Between Menu Options (Tap 1x)

Execute Menu Options (Tap 1x)

Troubleshooting

Fault Reset: Pinhole Fault Reset Button

Note: Fault Reset will not restore the headset to factory default settings.

Factory Reset: Tap 10s for Configuration menu, Tap 2x for Factory reset, Tap 1x for Headset reset, good-bye

Quick Reference

TYPE	OPERATION	BUTTON COMMANDS
Basic Operations	Power on / Power off	Tap 1s
	Volume up / Volume down	Tap 1x or Tap 1x

Mobile Phone	OPERATION	BUTTON COMMANDS
Mobile Phone	Answer phone call	Tap 1x
	End phone call	Hold 2s
	Reject phone call	Hold 2s

Siri and Google Assistant	OPERATION	BUTTON COMMANDS
Siri and Google Assistant	Activate the Siri or Google Assistant	Hold 3s

Mesh Intercom™	OPERATION	BUTTON COMMANDS
Mesh Intercom™	Mesh Intercom on/off	Tap 1x
	Channel setting	Tap 2x
	Mesh Grouping	Hold 5s
	Reset Mesh	Hold 8s

Intercom	OPERATION	BUTTON COMMANDS
Intercom	Enable/Disable Mic	Hold 1s
	Intercom pairing	Hold 5s

Music	OPERATION	BUTTON COMMANDS
Music	Start/End Intercom	Tap 1x
	Play/Pause music	Tap 1s
	Track forward	Hold 1s

FM Radio	OPERATION	BUTTON COMMANDS
FM Radio	Track backward	Hold 1s
	FM radio on/off	Hold 1s
	Select preset	Tap 1s
	Seek forward/backward	Tap 2x or Tap 2x

LED Taillight	OPERATION	BUTTON COMMANDS
LED Taillight	Scan up FM band/ stop scanning	Hold 1s
	LED on and solid	Tap 1x
	Night flash	Tap 1x
	Day flash	Tap 1x
	Adaptive Flash	Tap 1x

LED Taillight	OPERATION	BUTTON COMMANDS
LED Taillight	LED off	Tap 1x