

SENA



OUTRUSH R

BLUETOOTH® HELMET

USER'S GUIDE

1.0.0

ENGLISH

RIDE CONNECTED

Blast your favorite tunes, talk over the intercom with your buddies, hear directions from your GPS and more, all through your OUTRUSH R Bluetooth® System Helmet. With built-in Bluetooth® capabilities, HD Intercom, technology has never felt so minimal or freeing.



Bluetooth® 5.0



Intercom up to 900 m (0.6 mi)*



Four-Way Intercom



Audio Multitasking™



Audio Source Priority



Advanced Noise Control™

* in open terrain

GETTING STARTED

1. Update this product for free with the latest firmware to fully enjoy the new advanced features built into this product. Visit **sena.com** to see how to update your product.
2. Users can follow Sena on Facebook, YouTube, Twitter and Instagram to receive the most up to date information on products, helpful tips and all other announcements regarding Sena products.

SENA



SENA Technologies, Inc.

Customer Support: **sena.com**

TABLE OF CONTENTS

1.	ABOUT THE OUTRUSH R BLUETOOTH HELMET	8
<hr/>		
1.1	General Information	8
1.2	Product Details	9
1.2.1	Bluetooth System Button	10
1.2.2	Detachable Inner Parts	11
1.3	Package Contents	11
1.4	Wearing the Helmet	12
1.4.1	Putting on the Helmet	12
1.4.2	Removing the Helmet	12
1.4.3	Removing the Shield Visor	13
1.4.4	Installing the Shield Visor	14
1.4.5	Opening the Chin Guard	15
1.4.6	Removing the Breath Guard	16
1.4.7	Installing the Breath Guard	16
1.4.8	Removing the Cheek Pads	17
1.4.9	Installing the Cheek Pads	17
1.4.10	Removing the Inner Pad	18
1.4.11	Installing the Inner Pad	19
1.4.12	Removing the Sun Visor	20
1.4.13	Installing the Sun Visor	20
1.5	Pre-Ride Helmet Inspection	21
1.5.1	Checking the Exterior	21
1.5.2	Checking the Chinstrap	21
2.	GETTING STARTED: BLUETOOTH SYSTEM	22
<hr/>		
2.1	Downloadable Sena Software	22
2.1.1	Sena Utility App	22
2.1.2	Sena Device Manager	22

2.2	Powering On and Off	22
2.3	Charging	23
2.4	Checking the Battery Level	24
2.5	Volume Adjustment	24
3.	PAIRING THE BLUETOOTH SYSTEM WITH OTHER BLUETOOTH DEVICES	25
<hr/>		
3.1	Mobile Phone Pairing	25
3.1.1	Initially Pairing the Bluetooth system	25
3.1.2	Pairing When the OTRUSH R is Turned Off	26
3.1.3	Pairing When the OTRUSH R is Turned On	26
3.2	Second Mobile Phone Pairing - Second Mobile Phone, GPS, and SR10	27
3.3	GPS Pairing	27
3.4	Advanced Selective Pairing: A2DP Stereo or Handsfree	28
3.4.1	A2DP Stereo Music Only	28
3.4.2	HFP for Phone Call Only	28
4.	MOBILE PHONE USAGE	29
<hr/>		
4.1	Making and Answering Calls	29
4.2	Speed Dialing	29
4.2.1	Assigning Speed Dial Presets	29
4.2.2	Using Speed Dial Presets	30
5.	STEREO MUSIC	31
<hr/>		
5.1	Bluetooth Stereo Music	31
5.2	Music Sharing	31

6.	BLUETOOTH INTERCOM	33
<hr/>		
6.1	Intercom Pairing	33
6.2	Two-way Intercom	35
6.3	Multi-Way Intercom	35
6.3.1	Starting a Three-Way Intercom Conference	36
6.3.2	Starting a Four-Way Intercom Conference	37
6.3.3	Ending Multi-Way Intercom	38
7.	THREE-WAY CONFERENCE PHONE CALL WITH INTERCOM PARTICIPANT	39
<hr/>		
8.	GROUP INTERCOM	40
<hr/>		
9.	UNIVERSAL INTERCOM	41
<hr/>		
10.	FM RADIO	43
<hr/>		
10.1	FM Radio On/Off	43
10.2	Seek and Save	43
10.3	Scan and Save	44
10.4	Temporary Preset	44
10.5	Navigating Preset Stations	45
10.6	FM Sharing	45
10.7	Region Selection	46
11.	FUNCTION PRIORITY AND FIRMWARE UPGRADES	47
<hr/>		
11.1	Function Priority	47
11.2	Firmware Upgrades	47

12. CONFIGURATION SETTING	48
12.1 Bluetooth System Configuration Setting	48
12.1.1 Delete All Pairing	49
12.1.2 Remote Control Pairing	49
12.2 Software Configuration Setting	49
12.2.1 Speed Dial	49
12.2.2 Unit Language	49
12.2.3 Audio Source Priority (Default: Intercom)	50
12.2.4 Audio Boost (Default: Disable)	50
12.2.5 Smart Volume Control (Default: Disable)	50
12.2.6 VOX Phone (Default: Enable)	51
12.2.7 VOX Intercom (Default: Disable)	51
12.2.8 HD Voice (Default: Enable)	52
12.2.9 HD Intercom (Default: Enable)	53
12.2.10 VOX Sensitivity (Default: 3)	53
12.2.11 Voice Prompts (Default: Enable)	53
12.2.12 RDS AF Setting (Default: Disable)	54
12.2.13 FM Station Guide (Default: Enable)	54
12.2.14 Sidetone (Default: Disable)	54
12.2.15 Advanced Noise Control™ (Default: Enable)	54
12.2.16 Audio Multitasking™ (Default: Disable)	55
12.2.17 Background Volume (Default: Level 5)	56
13. TROUBLESHOOTING	57
13.1 Fault Reset	57
13.2 Factory Reset	58
14. MAINTENANCE AND CARE	59
14.1 Outer Shell	59
14.2 Inner Lining	59
14.3 Storing the Helmet	59
QUICK REFERENCE	60

1. ABOUT THE OUTRUSH R BLUETOOTH HELMET

1.1 General Information

This product is a motorcycle helmet.

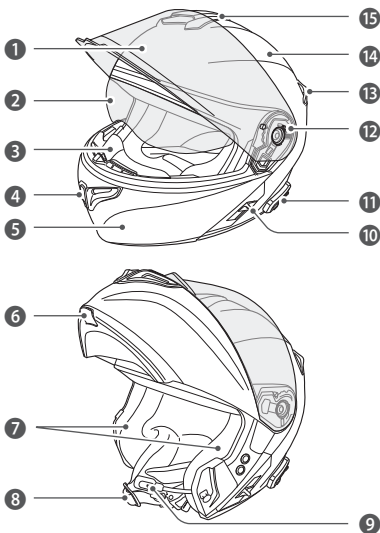
Do not use it for any other purpose than riding a motorcycle. If you use the helmet for anything else, it may not provide sufficient protection in an accident.

No helmet can protect the wearer against all possible impact scenarios.

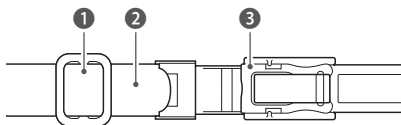
For maximum protection, the helmet must fit properly on the head and its retention strap securely fastened under the chin. With the retention system comfortably but firmly adjusted, the helmet should allow sufficient peripheral vision when secured. If the helmet is too large, it may move on your head while riding. If the helmet can be removed when pulled from the back in an upward and forward direction, it's not fitted properly. This could cause the helmet to obstruct your vision while riding or come off in an accident, resulting in personal injury or death. Please refer to **Section 1.4: "Wearing the Helmet"** for more details about properly securing and wearing your helmet.

The contents of this helmet User's Guide are subjected to change without notice. Its illustration may differ from the actual product. The copyrights for the User's Guide belong to Sena Technologies, Inc. Reproduction or copying of the **User's Guide** without permission is strictly prohibited.

1.2 Product Details



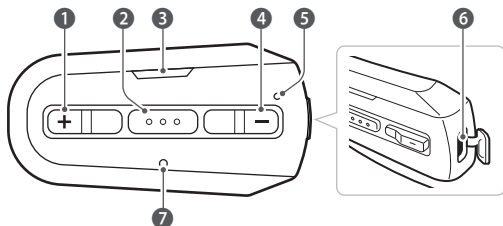
No.	Name
1	Shield Visor
2	Sun Visor
3	Breath Guard
4	Chin Vent
5	Chin Guard
6	Chin Guard Lever
7	Speakers
8	Chinstrap
9	Microphone
10	Sun Visor Lever
11	Bluetooth System Button
12	Shield Ratchet
13	Rear Vent
14	Shell
15	Top Vent



No. Name

- ① Strap Adjuster
- ② Chinstrap
- ③ One-touch Bracket

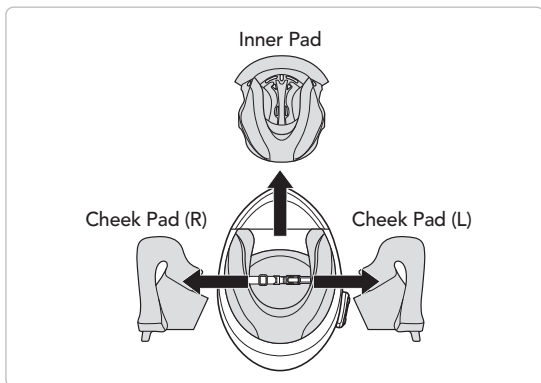
1.2.1 Bluetooth System Button



No. Name

- ① (+) Button
- ② Center Button
- ③ Status LED
- ④ (-) Button
- ⑤ Charging LED
- ⑥ DC Power Charging & Firmware Upgrade Port
- ⑦ Fault Reset Button

1.2.2 Detachable Inner Parts



1.3 Package Contents



Helmet



Helmet Pouch



USB Power &
Data Cable (USB-C)



Boom Microphone
Sponges (2)



Reflex
Stickers (4)*

*Included only in Europe package

1.4 Wearing the Helmet

1.4.1 Putting on the Helmet

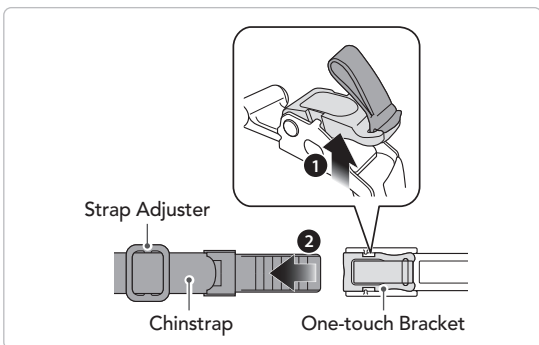
1. Unfasten the chinstrap by using the retention system.
2. Expand the helmet opening with your hand, and slide your head into the helmet.
3. Fasten the chinstrap as tight as possible without causing you pain.

1.4.2 Removing the Helmet

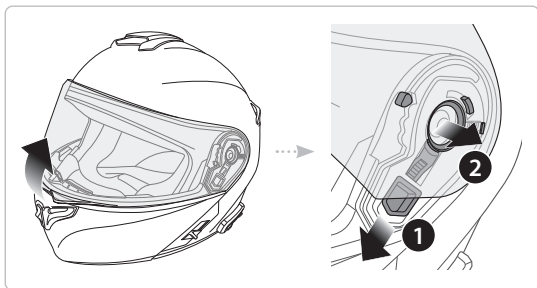
1. Unfasten the chinstrap by using the retention system.
2. Gently pull the padded chinstrap outward and slide the helmet off your head.

Note: Fastening the chinstrap after removing the helmet will help avoid scratching surfaces it's placed upon.

Quick-release retention system

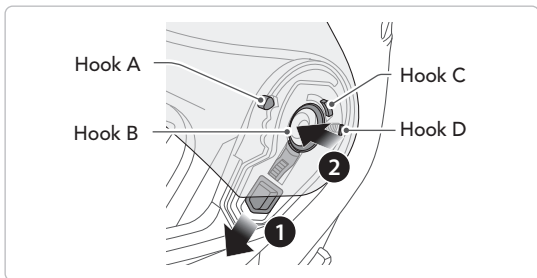


1.4.3 Removing the Shield Visor



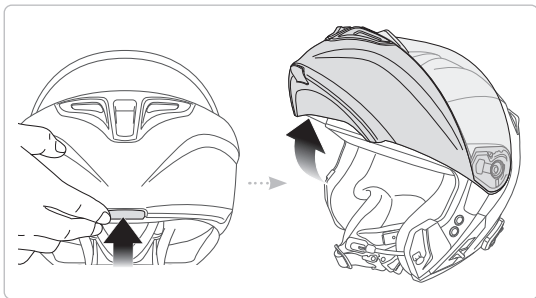
1. Open the shield visor to the fully opened position.
2. Pull the shield visor outward while pushing the shield ratchet lever downward.
3. Repeat Step 2 on the opposite side.

1.4.4 Installing the Shield Visor



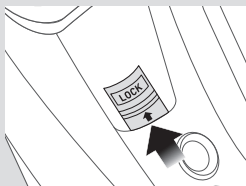
1. Align hook A, hook B, hook C, and hook D to the shield ratchet as shown in the illustration above.
2. Insert hooks A-D into the shield ratchet while pushing the shield ratchet lever downward.
3. Release the shield ratchet lever to lock the shield visor into place.
4. Repeat the process on the opposite side.

1.4.5 Opening the Chin Guard

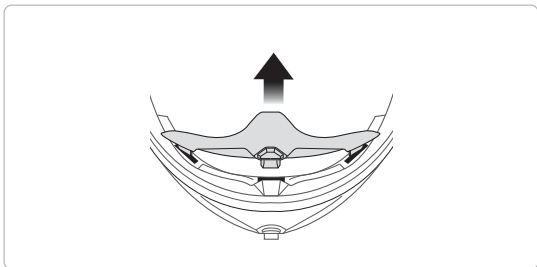


Pull the chin guard lever outward and lift the chin guard upward to the fully opened position.

Note: You can keep the chin guard up by pushing the chin guard lock lever upward on the left side of the helmet.

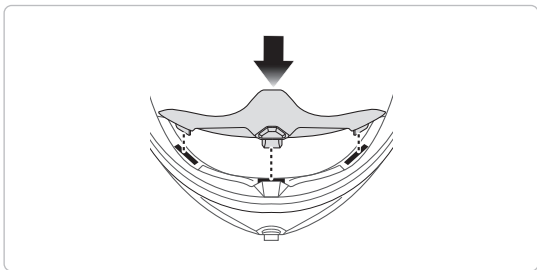


1.4.6 Removing the Breath Guard



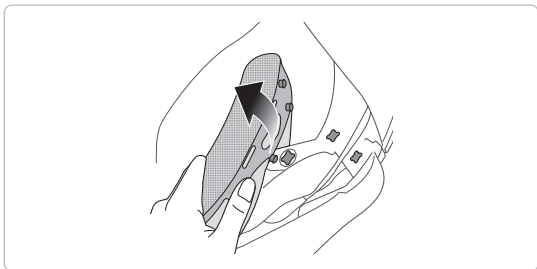
Pull the breath guard away from the chin guard until it separates completely.

1.4.7 Installing the Breath Guard



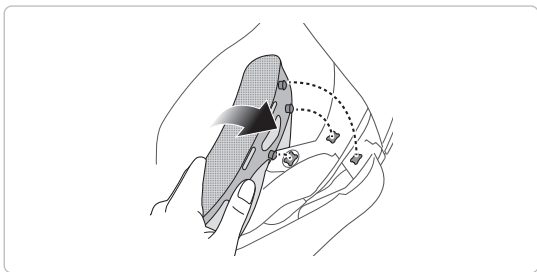
Insert the three tabs of the breath guard into the slots.

1.4.8 Removing the Cheek Pads



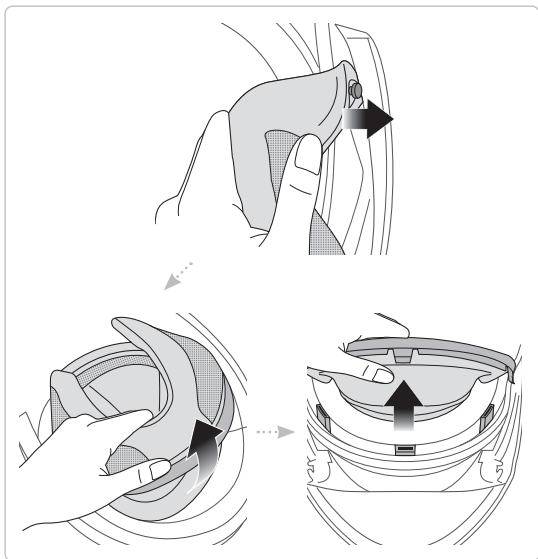
1. Unsnap the three fasteners of the cheek pad from the helmet.
2. Repeat the process on the opposite side.

1.4.9 Installing the Cheek Pads



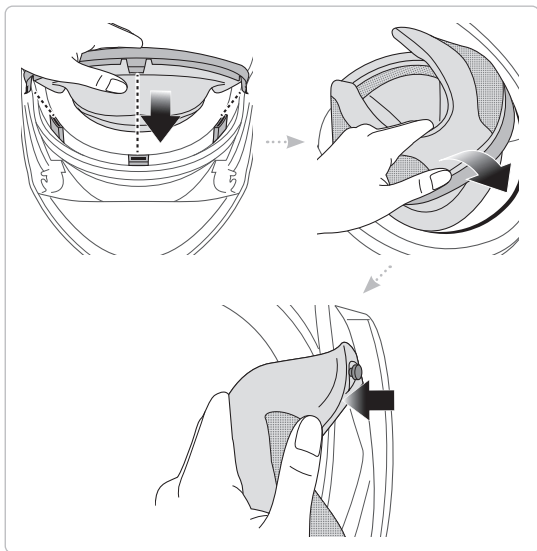
1. Pass the chinstrap through the hole of the cheek pad and snap the three fasteners of the cheek pad into place.
2. Repeat the process on the opposite side.

1.4.10 Removing the Inner Pad



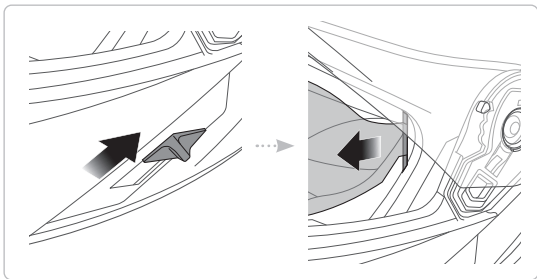
1. Detach the inner pad plate from the inner pin next to the chin guard.
2. Pull the inner pad away from the back of the helmet.
3. Hold the front section of the inner pad and pull it away from the front of the helmet.

1.4.11 Installing the Inner Pad



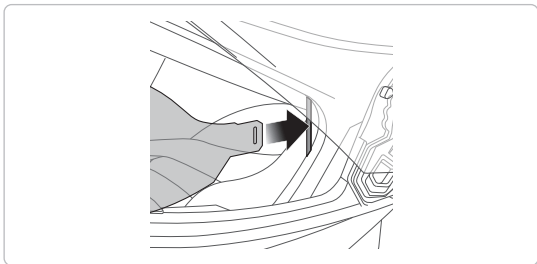
1. Align and insert the three tabs of the inner pad into the slots of the front section.
2. Insert the rear plastic plate of the inner pad into the space between the shell and EPS.
3. Attach the inner pad plate to the inner pin next to the chin guard.

1.4.12 Removing the Sun Visor



1. Slide the sun visor lever in the direction shown in the illustration above to lower the sun visor.
2. Pull one side of the visor in the direction shown in the illustration above.
3. Repeat Step 2 on the opposite side.

1.4.13 Installing the Sun Visor



1. Insert the sun visor tab into its slot until you hear a click.
2. Repeat the process on the opposite side.

1.5 Pre-Ride Helmet Inspection

1.5.1 Checking the Exterior

Check the helmet regularly for damage. Small, superficial scratches will not impair the helmet's protective qualities. In the case of more serious damage (cracks, dents, flaking and cracking paint, etc.), the helmet should no longer be used.

1.5.2 Checking the Chinstrap

1. Ensure that the chinstrap is properly routed under your chin.
2. To test the chinstrap tension, slip your index finger under the chinstrap and pull. If the chinstrap is loose under the chin, it needs to be tightened. If the chinstrap loosens when you pull on it, the helmet is not properly fitted. Undo the chinstrap completely and try fastening it again, then repeat the test.
3. If you are unable to fasten the chinstrap so that it fits firmly against the chin, check that your helmet is still the right size for you.

Note: Repeat the test after each adjustment.

⚠ CAUTION: Never ride with the chinstrap unfastened or incorrectly adjusted. The chinstrap should fit correctly and should not become loose when pulled. The fastener is not correctly closed if the chinstrap becomes loose when pulled.

2. GETTING STARTED: BLUETOOTH SYSTEM

2.1 Downloadable Sena Software

2.1.1 Sena Utility App

By simply pairing your phone with your Bluetooth system, you can use the **Sena Utility App** for quicker, easier setup and management.

- App Features
 - Music, Device settings, and User's Guide.
- Download
 - Android: Google Play Store > **Sena Utility**
 - iOS: App Store > **Sena Utility**

2.1.2 Sena Device Manager

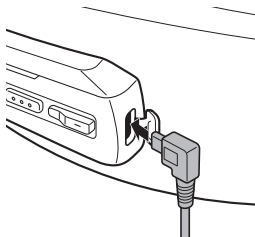
The **Sena Device Manager** allows you to upgrade firmware and configure settings directly from your PC. Download the **Sena Device Manager** from **sena.com**.

2.2 Powering On and Off

- Power On
 - Press and hold the **Center Button** and the **(+) Button** for **1 second**.
- Power Off
 - Tap the **Center Button** and the **(+) Button**.

2.3 Charging

The Bluetooth system can be charged using many common methods via the supplied USB power & data cable: the **OUTRUSH R** is compatible with 5 V input USB-charged devices only.



Depending upon the charging method, the Bluetooth system will be fully charged in about 2.5 hours.

Note:

- Please make sure to take off your helmet while charging. The Bluetooth system automatically turns off during charging.
- Any 3rd party USB charger can be used with Sena products if the charger is approved by either the FCC, CE, IC or other locally approved agencies that Sena accepts.

2.4 Checking the Battery Level

When the Bluetooth system is powering on, the red LED flashes rapidly indicating the battery level.

4 flashes = High, 70 ~ 100%

3 flashes = Medium, 30 ~ 70%

2 flashes = Low, 0 ~ 30%

2.5 Volume Adjustment

You can raise or lower the volume by tapping the **(+) Button** or the **(-) Button**. Volume is set and maintained independently at different levels for each audio source (i.e. phone, intercom), even when the Bluetooth system is rebooted.

- Volume up/down

Tap the **(+) Button** or the **(-) Button**.

3. PAIRING THE BLUETOOTH SYSTEM WITH OTHER BLUETOOTH DEVICES

Before using the Bluetooth system with other Bluetooth devices for the first time, they'll need to be "paired". This enables them to recognize and communicate with one another whenever they're within range. The Bluetooth system can pair with multiple Bluetooth devices such as a mobile phone, MP3 player, GPS or Sena SR10 Two-Way Radio Adapter via **Mobile Phone Pairing, Second Mobile Phone Pairing**. The Bluetooth system can also be paired with another Sena headset or Bluetooth system.

3.1 Mobile Phone Pairing

There are three ways to pair the phone.

3.1.1 Initially Pairing the Bluetooth system

The Bluetooth system will automatically enter the phone pairing mode when you initially turn on the Bluetooth system or in the following situations:

- Rebooting after executing the **Factory Reset**; or
 - Rebooting after executing the **Delete All Pairings**.
1. Press and hold the **Center Button** and the **(+) Button** for **1 second**. You will hear a voice prompt, "**Phone pairing**".

2. With your mobile phone in Bluetooth-pairing mode, select **Sena OTRUSH R** in the list of devices detected.
3. If your mobile phone asks for a PIN, enter 0000.

Note:

- The phone pairing mode lasts for **3 minutes**.
- To cancel phone pairing, tap the **Center Button**.

3.1.2 Pairing When the OTRUSH R is Turned Off

1. While the Bluetooth system is **off**, press and hold the **Center Button** and **(+) Button** for **5 seconds**. You will hear a voice prompt, **"Phone pairing"**.
2. With your mobile phone in Bluetooth-pairing mode, select **Sena OTRUSH R** in the list of devices detected.
3. If your mobile phone asks for a PIN, enter 0000.

3.1.3 Pairing When the OTRUSH R is Turned On

1. While the Bluetooth system is **on**, press and hold the **Center Button** for **10 seconds**. You will hear a voice prompt, **"Phone pairing"**.
2. With your mobile phone in Bluetooth-pairing mode, select **Sena OTRUSH R** in the list of devices detected.
3. If your mobile phone asks for a PIN, enter 0000.

3.2 Second Mobile Phone Pairing - Second Mobile Phone, GPS, and SR10

1. To enter the **configuration menu**, press and hold the **Center Button** for **15 seconds** until you hear the voice prompt, "**Configuration menu**".
2. Tap the **(+) Button** until you hear a voice prompt, "**Second mobile phone pairing**".
3. With your mobile phone in Bluetooth-pairing mode, select **Sena OTRUSH R** in the list of devices detected.
4. If your mobile phone asks for a PIN, enter 0000.

3.3 GPS Pairing

1. Press and hold the **Center Button** for **15 seconds** until you will hear a voice prompt, "**Configuration menu**".
2. Tap the **(+) Button** until you hear a voice prompt, "**GPS pairing**".
3. With your Bluetooth device on the GPS navigation screen, select **Sena OTRUSH R** in the list of devices detected.
4. If your Bluetooth device asks for a PIN, enter 0000.

3.4 Advanced Selective Pairing: A2DP Stereo or Handsfree

Phone Pairing allows the Bluetooth system to establish two Bluetooth profiles: **Hands-Free** or **A2DP Stereo**. **Advanced Selective Pairing** allows the Bluetooth system to separate the profiles to enable connection with two devices.

3.4.1 A2DP Stereo Music Only

1. To enter the **configuration menu**, press and hold the **Center Button** for **15 seconds** until you hear the voice prompt, "**Configuration menu**".
2. Tap the **(+) Button** until you hear a voice prompt, "**Media selective pairing**".
3. With your mobile phone in Bluetooth-pairing mode, select **Sena OTRUSH R** in the list of devices detected.
4. If your mobile phone asks for a PIN, enter 0000.

3.4.2 HFP for Phone Call Only

1. To enter the **configuration menu**, press and hold the **Center Button** for **15 seconds** until you hear the voice prompt, "**Configuration menu**".
2. Tap the **(+) Button** until you hear a voice prompt, "**Phone selective pairing**".
3. With your mobile phone in Bluetooth-pairing mode, select **Sena OTRUSH R** in the list of devices detected.
4. If your mobile phone asks for a PIN, enter 0000.

4. MOBILE PHONE USAGE

4.1 Making and Answering Calls

- Answering a call
Tap the **Center Button**.
You can also answer the incoming call by loudly speaking any word of your choice if **VOX Phone** is enabled, unless you are connected to intercom.
- Ending/Rejecting a call
Press and hold the **Center Button** for **2 seconds**.
- Make a Call with Voice dialer
Press and hold the **Center Button** for **3 seconds** in **stand-by mode** to activate the voice dialer of your mobile phone.

4.2 Speed Dialing

4.2.1 Assigning Speed Dial Presets

Speed Dial Presets could be assigned in the settings menu, accessible through **Sena Device Manager** or **Sena Utility App**.

4.2.2 Using Speed Dial Presets

1. Press and hold the **(+) Button** for **3 seconds** and you will hear a voice prompt, **"Speed dial"**.
2. Tap the **(+) Button** or the **(-) Button** to navigate between the menus. You will hear prompts for each menu item.
3. Tap the **Center Button** to select a voice menu among the followings:
 - (1) Last number redial
 - (2) Speed dial 1
 - (3) Speed dial 2
 - (4) Speed dial 3
 - (5) Cancel
4. To redial the last number called, tap the **Center Button** when you hear a voice prompt, **"Last number redial"**.
5. To call one of the speed dials, tap the **Center Button** when you hear a voice prompt, **"Speed Dial (#)"**.
6. If you want to exit the speed dial immediately, tap the **(+) Button** or the **(-) Button** until you hear a voice prompt, **"Cancel"**, and tap the **Center Button**.

5. STEREO MUSIC

5.1 Bluetooth Stereo Music

- Play/Pause music
Press and hold the **Center Button** for **1 second** until you hear a double beep.
- Track forward/back
Press and hold the **(+) Button** or the **(-) Button** for **1 second** until you hear a beep.

5.2 Music Sharing

You can start sharing music with an intercom friend using Bluetooth stereo music during a two-way intercom conversation. When you terminate music sharing, you can go back to the intercom conversation.

- Start the Music Sharing
Press and hold the **Center Button** for **1 second** during an intercom conversation.
- Stop the Music Sharing
Press and hold the **Center Button** for **1 second** to end the intercom call.

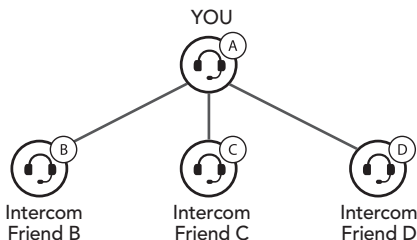
Note:

1. Both you and your intercom friend can remotely control music playback such as track forward and track back.
2. **Music sharing** will be paused when you are using your mobile phone or listening to GPS instructions.
3. **Music sharing** will be terminated if the Bluetooth system starts a multi-way intercom conference.
4. When **Audio Multitasking** is enabled, if an intercom call is made when you are listening to music, music sharing will not work.

6. BLUETOOTH INTERCOM

6.1 Intercom Pairing

Up to three other people can be paired with the Bluetooth system for Bluetooth intercom conversations.



1. Press and hold the **Center Button** of the **Bluetooth system A and B** for **5 seconds** until red LEDs of the both units start to flash rapidly and until you hear a voice prompt, **"Intercom pairing"**.



and

= Press and hold the **Center Button** for **5 seconds**.



2. Tap the **Center Button** on **either Bluetooth system** and wait until the intercom connection is automatically established and the LEDs of both turn blue.



and = Tap the **Center Button**.



- Repeat steps 1 and 2 to pair with **Intercom Friends C & D**.
- The intercom pairing queue is '**Last-Come, First-Served**'. If a Bluetooth system has multiple paired Bluetooth systems for intercom conversations, the last paired Bluetooth system is set as **first intercom friend**. The previous intercom friend becomes **second intercom friend**, and **third intercom friend**.

Last-Come, First-Served



YOU



Intercom
Friend 1



YOU



Intercom
Friend 1



Intercom
Friend 2



YOU



Intercom
Friend 1



Intercom
Friend 2



Intercom
Friend 3

6.2 Two-way Intercom

You can start an intercom conversation with one of any intercom friends by tapping the **Center Button**: single tap to intercom with the *first intercom friend*, double tap to intercom with the *second intercom friend*, and triple tap to intercom with the *third intercom friend*.



= Tap the **Center Button**.

Intercom
Friend 1



= Double tap the **Center Button**.

Intercom
Friend 2



= Triple tap the **Center Button**.

Intercom
Friend 3

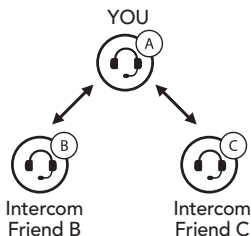
6.3 Multi-Way Intercom

Multi-Way Intercom enables conference-call-style conversations with up to **three Intercom Friends** at the same time. While **Multi-Way Intercom** is in progress, mobile phone connection is temporarily disconnected. However, as soon as **Multi-Way Intercom** terminates, the mobile phone connection will be reestablished.

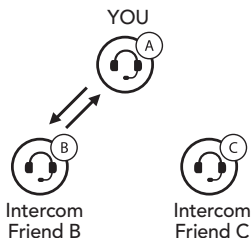
6.3.1 Starting a Three-Way Intercom Conference

You (A) can have a **Three-Way Intercom Conference** with two other **Intercom Friends (B & C)** by establishing two intercom connections simultaneously.

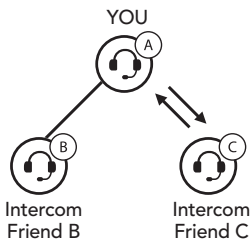
1. You (A) need to be paired with two other **Intercom Friends (B & C)** for three-way conference intercom.



2. Start an intercom conversation with one of the two friends in your intercom group.

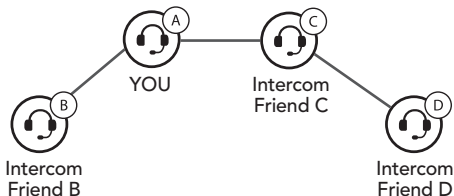


3. You (A) can call the **second Intercom Friend (C)** by double tapping the **Center Button**, or the **second Intercom Friend (C)** may join the intercom by making an intercom call to you (A).



6.3.2 Starting a Four-Way Intercom Conference

With three **Intercom Friends** connected, a new participant (D) can make it a **Four-Way Intercom Conference** by making an intercom call to either (B) or (C).



6.3.3 Ending Multi-Way Intercom

You can completely terminate the conference intercom or just disconnect an intercom connection with one of your active **Intercom Friends**.

1. Press and hold the **Center Button** for **3 seconds** until you hear a beep to terminate all intercom connections.
2. Tap the **Center Button** to disconnect from your **first Intercom Friend**. Double tap the **Center Button** to disconnect from your **second Intercom Friend**.

7. THREE-WAY CONFERENCE PHONE CALL WITH INTERCOM PARTICIPANT

You can have a **Three-Way Conference Phone Call** by adding an **Intercom Friend** to the mobile phone conversation.

1. During a mobile phone call, tap the **Center Button once, twice, or three times** to invite one of your intercom friends to the conversation.
2. To disconnect the intercom during a conference phone call, tap the **Center Button once, twice, or three times**.
3. To disconnect the mobile phone call during a conference phone call, press and hold the **Center Button for 2 seconds**.

8. GROUP INTERCOM

Group Intercom allows you to instantly create a **Multi-Way Conference Intercom** with three of the most recently paired Bluetooth systems.

1. Go through intercom pairing with up to three Bluetooth systems you want to have **Group Intercom** with.
2. Tap the **(+) Button** and **(-) Button** to begin **Group Intercom**. The LED will flash green and you will hear a voice prompt, "**Group intercom**".
3. When all of the Bluetooth systems are connected together, everyone will hear a voice prompt, "**Group intercom connected.**"
4. To terminate **Group Intercom**, press and hold the **Center Button** for **3 seconds** during **Group Intercom**. You will hear a voice prompt, "**Group intercom terminated**".

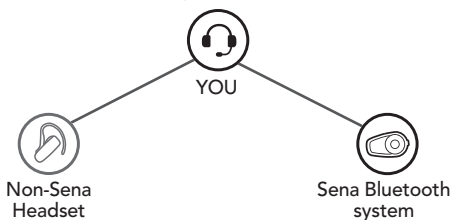
9. UNIVERSAL INTERCOM

Universal Intercom allows you to have intercom conversations with users of non-Sena Bluetooth headsets. Non-Sena Bluetooth headset can be connected to the Sena Bluetooth system if they support the Bluetooth Hands-Free Profile (HFP). You can pair the Bluetooth system with only one non-Sena headset at a time. The intercom distance depends on the performance of the Bluetooth system to which it's connected.

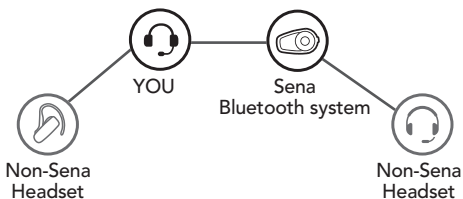
When a non-Sena headset is paired with the Bluetooth system, if another Bluetooth device is paired via **Second Mobile Phone Pairing**, it will be disconnected.

1. Press and hold the **Center Button** for **15 seconds** to enter the configuration menu. Tap the **(+) Button** or the **(-) Button** until you hear a voice prompt, **"Universal intercom pairing"**.
2. Tap the **Center Button** to enter into Universal Intercom Pairing mode.
3. Put the non-Sena Bluetooth headset in Pairing Mode. The Bluetooth system will automatically pair with a non-Sena Bluetooth headset.
4. You can have a **Two-Way Intercom** or **Multi-Way Intercom** communication with up to three **Intercom Friends** using non-Sena headsets by following the procedures described below.

Example of a Three-Way Universal Intercom



Example of a Four-Way Universal Intercom



Note: Some non-Sena Bluetooth headsets may not support **Multi-Way Universal Intercom**.

10. FM RADIO

10.1 FM Radio On/Off

- Start or Stop the FM radio
Press and hold the **(-) Button** for **1 second**.

10.2 Seek and Save

- Seek forward/backward
Double tap the **(+) Button** or the **(-) Button** to search for radio stations.
- Save the current station
 1. Press and hold the **Center Button** for **3 seconds** until you hear a voice prompt, **"Preset (#)"**.
 2. Tap the **(+) Button** or the **(-) Button**, in order to select which preset number you want for that specific station. (You can save up to 10 preset stations.)
- Save station to the preset number
Press and hold the **(+) Button** for **1 second**. You will then hear a voice prompt, **"Save preset (#)"**.
- Delete station from memory
Press and hold the **(-) Button** for **1 second**. You will then hear a voice prompt, **"Delete preset (#)"**.

10.3 Scan and Save

- Start scanning
 1. Press and hold the **(+) Button** for **1 second**.
 2. The Sena tuner pauses at each station it finds for **8 seconds** before moving to the next.
- Save the current station

To save a station while scanning frequencies, tap the **Center Button** at that station. You will hear a voice prompt, **"Save preset (#)"**. The station will be saved as the next preset number.

Note: You can use the **Sena Device Manager** or the **Sena Utility App** to save the preset stations.

10.4 Temporary Preset

The Temporary Station Preset feature automatically finds and saves the nearest 10 radio stations without changing your existing preset stations.

1. Tap the **(+) Button 3 times** to automatically find and save 10 stations.
2. The temporary preset stations will be cleared when the Bluetooth system reboots.

10.5 Navigating Preset Stations

Using the methods above, up to 10 radio stations can be stored. You can navigate through the saved stations.

- Go upward to the next saved preset station.
Press and hold the **Center Button** for **1 second**.

10.6 FM Sharing

You can listen to the radio during the intercom conversation. During **FM Sharing**, you can move to the next preset station and you or your friend on the intercom can change frequencies. If either person changes the frequency, the other will listen to the same frequency.

- Start the FM Sharing
Press and hold the **(-) Button** for **1 second** during the intercom conversation.
- Stop the FM Sharing
Press and hold the **(-) Button** for **1 second** to end the intercom call.

Note:

1. **FM Sharing** will be terminated if the Bluetooth system starts a multi-way intercom conference.
2. When **Audio Multitasking** is enabled, if an intercom call is made while you are listening to the FM radio, **FM Sharing** will not work.

10.7 Region Selection

You can select the proper FM frequency region from the **Sena Device Manager** or the **Sena Utility App**. With the region setting, you may optimize the seek function to avoid unnecessary frequency ranges.

Region	Frequency Range	Step
Worldwide	76.0 ~ 108.0 MHz	± 100 kHz
North America, South America and Australia	87.5 ~ 107.9 MHz	± 200 kHz
Asia and Europe	87.5 ~ 108.0 MHz	± 100 kHz
Japan	76.0 ~ 95.0 MHz	± 100 kHz

11. FUNCTION PRIORITY AND FIRMWARE UPGRADES

11.1 Function Priority

The Bluetooth system operates in the following order of priority:

- | | |
|------------------|---|
| (highest) | Mobile phone |
| | Intercom/FM Sharing |
| | Music sharing by Bluetooth stereo music |
| | Bluetooth stereo music |
| (lowest) | FM radio |

A lower priority function is always interrupted by a higher priority function.

Note: If you select music as the **Audio Source Priority**, the order of priority will change as below:

- | | |
|------------------|---|
| (highest) | Mobile phone |
| | Bluetooth stereo music |
| | Intercom/FM Sharing |
| | Music sharing by Bluetooth stereo music |
| (lowest) | FM radio |

11.2 Firmware Upgrades

The Bluetooth system supports firmware upgrades. You can update the firmware using the Sena Device Manager. Please visit Sena Bluetooth website at www.sena.com to check the latest software downloads.

12. CONFIGURATION SETTING

12.1 Bluetooth System Configuration Setting

1. To enter configuration menu, press and hold the **Center Button** for **15 seconds** until you will also hear a voice prompt, **"Configuration menu"**.
2. Tap the **(+) Button** or the **(-) Button** to navigate between the menus. You will hear voice prompts for each menu item.
3. You can execute the command by tapping the **Center Button**.

Configuration Menu	Tap Center Button
Second Mobile Phone Pairing	None
GPS Pairing	None
Phone Selective Pairing	None
Media Selective Pairing	None
Delete All Pairings	Execute
Remote Control Pairing	Execute
Universal Intercom Pairing	Execute
Factory Reset	Execute
Exit Configuration	Execute

12.1.1 Delete All Pairing

You can delete all Bluetooth pairing information of the **Bluetooth system**.

12.1.2 Remote Control Pairing

You can remotely control the Bluetooth system using **Sena Remote Control devices** (sold separately).

1. Turn on the Bluetooth system and the Remote Control device.
2. Execute **Remote Control Pairing**.
3. Enter pairing mode in the Remote Control device.
The Bluetooth system will automatically connect with the Remote Control device in pairing mode.

12.2 Software Configuration Setting

You can change the settings of the Bluetooth system through the **Sena Device Manager** or the **Sena Utility App**.

12.2.1 Speed Dial

Assign phone numbers for speed dialing to make a phone call quickly.

12.2.2 Unit Language

You can select the device language. The selected language is maintained even when the Bluetooth system is rebooted.

12.2.3 Audio Source Priority (Default: Intercom)

Audio Source Priority allows you to select the priority between the intercom and music (which includes GPS app instructions and message notifications) from a smartphone. If the intercom is selected as the **Audio Source Priority**, your music will be interrupted during an intercom conversation. If music is selected as the **Audio Source Priority**, intercom conversations will be interrupted while your music is heard.

Note: **Audio Source Priority** is active only when **Audio Multitasking** is disabled.

12.2.4 Audio Boost (Default: Disable)

Enabling **Audio Boost** increases the overall maximum volume. Disabling **Audio Boost** reduces the overall maximum volume, but delivers more balanced sound.

12.2.5 Smart Volume Control (Default: Disable)

Smart Volume Control automatically changes the level of the speaker volume based on the level of the environmental noise. When it is disabled, volume is controlled manually. You can enable the level adjustment by setting the sensitivity to **low**, **medium**, or **high**. **Smart Volume Control** responds to smaller environmental noises as the sensitivity level becomes higher.

12.2.6 VOX Phone (Default: Enable)

If this feature is enabled, you can answer incoming calls by voice. When you hear a ringtone for an incoming call, you can answer the phone by saying a word such as **"Hello"** loudly or by blowing air into the microphone. **VOX phone** is temporarily disabled if you are connected to intercom. If this feature is disabled, you have to tap the **Center Button** to answer an incoming call.

12.2.7 VOX Intercom (Default: Disable)

If this feature is enabled, you can initiate an intercom conversation with the last connected intercom friend by voice. When you want to start intercom, say a word such as **"Hello"** loudly or blow air into the microphone. If you start an intercom conversation by voice, the intercom terminates automatically when you and your intercom friend remain silent for 20 seconds. However, if you manually start an intercom conversation by tapping the **Center Button**, you have to terminate the intercom conversation manually. However, if you start intercom by voice and end it manually by tapping the **Center Button**, you will not be able to start intercom by voice temporarily. In this case, you have to tap the **Center Button** to restart the intercom. This is to prevent repeated unintentional intercom connections by strong wind noise. After rebooting the Bluetooth system, you can start intercom by voice again.

12.2.8 HD Voice (Default: Enable)

HD Voice allows you to communicate in high-definition during phone calls. This feature increases the quality so that the audio will be crisp and clear during phone call conversations. If this feature is enabled, incoming phone calls will interrupt intercom conversations and audio from the SR10 will not be heard during intercom conversations. **Three-Way Conference Phone Call with Intercom Participant** will not be available if **HD Voice** is enabled.

Note:

1. Refer to the manufacturer of your Bluetooth device that will be connected to the Bluetooth system to see if it supports **HD Voice**.
2. **HD Voice** is active only when **Audio Multitasking** is disabled.

12.2.9 HD Intercom (Default: Enable)

HD Intercom enhances the two-way intercom audio from normal quality to HD quality. **HD Intercom** will become temporarily disabled when you enter into a multi-way intercom. If this feature is disabled, the two-way intercom audio will change to normal quality.

Note:

1. The intercom distance of **HD Intercom** is relatively shorter than that of normal intercom.
2. **HD intercom** is active only when **Audio Multitasking** is disabled.

12.2.10 VOX Sensitivity (Default: 3)

VOX sensitivity can be adjusted depending on your riding environment. **Level 5** is the highest sensitivity setting and **level 1** is the lowest.

12.2.11 Voice Prompts (Default: Enable)

You can disable voice prompts by software configuration settings, but the following voice prompts are always on.

- Bluetooth system configuration settings menu, battery level indicator, speed dial, FM radio functions

12.2.12 RDS AF Setting (Default: Disable)

Radio Data System (RDS) Alternative Frequency (AF) Setting allows a receiver to re-tune to the second frequency location when the first signal becomes too weak. With **RDS AF** enabled on the receiver, a radio station with more than one frequency can be used.

12.2.13 FM Station Guide (Default: Enable)

When **FM Station Guide** is enabled, FM station frequencies are given by voice prompts as you select preset stations. When **FM Station Guide** is disabled, the voice prompts on FM station frequencies will not be given as you select preset stations.

12.2.14 Sidetone (Default: Disable)

Sidetone is audible feedback of your own voice. It helps you to naturally speak at the correct level according to varying helmet noise conditions. If this feature is enabled, you can hear what you are speaking during an intercom conversation or a phone call.

12.2.15 Advanced Noise Control™ (Default: Enable)

When **Advanced Noise Control** is enabled, the background noise is reduced during an intercom conversation. When it is disabled, the background noise is mixed with your voice during intercom.

12.2.16 Audio Multitasking™ (Default: Disable)

Audio Multitasking allows you to hear the audio from two features simultaneously. When **Audio Multitasking** is enabled, phone calls, GPS instructions and intercom conversations can be overlaid with audio from the FM radio, music or GPS app instructions from a smartphone in the background with reduced volume. Increasing or decreasing the volume of the audio in the foreground will also increase or decrease the volume of the overlaid audio in the background. The volume of the foreground audio can be adjusted using the Bluetooth system. How much background audio that is heard can be adjusted using the **Sena Utility App. HD Intercom** and **Audio Source Priority** become disabled temporarily when **Audio Multitasking** is enabled.

Foreground and Background Combination Table

Model	Foreground*			Background**	
	Phone	GPS	Intercom	FM Radio	Music or Smart Navi
OUTRUSH R	○ ^A	○ ^A			
		○	○		
			○ ^B	○	○ ^B
		○ ^C		○ ^C	○

* Two audio sources in the foreground can be heard simultaneously with the same volume level.

** Only one background source can be heard at a time while listening to an audio source in the foreground.

- A. GPS instructions can be heard during phone calls and the volume level of both audio sources can be adjusted using the Bluetooth system.
- B. GPS app directions will be heard in the background during intercom conversations.
- C. The FM radio will be heard in the background when GPS instructions are heard.

Note:

1. **Audio Multitasking** will be activated during two-way intercom conversations with a Bluetooth system that also supports this feature.
2. When **Audio Multitasking** is disabled, the background audio source will return to its independent volume level.
3. For **Audio Multitasking** to work properly, you need to power the Bluetooth system off and on. Please restart the Bluetooth system.
4. Some GPS devices may not support this feature.

12.2.17 Background Volume (Default: Level 5)

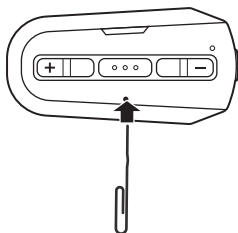
The **Background Volume** can be adjustable only when the **Audio Multitasking** turns on. **Level 9** is the highest volume and **level 0** is the lowest.

13. TROUBLESHOOTING

13.1 Fault Reset

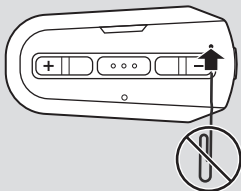
When the Bluetooth system is not working properly, you can easily reset the unit:

1. Locate the **Pin-hole Reset Button** below the **Center Button**.
2. Gently insert a paperclip into the hole and tap the **Fault Reset Button** with light pressure.
3. The Bluetooth system will shut down.



Note:

1. The charging LED is not a **Pin-hole Reset Button**. Do not press it.



2. **Fault Reset** will not restore the Bluetooth system to factory default settings.

13.2 Factory Reset

If you want to restore the Bluetooth system to factory default settings, use the **Factory Reset** in the configuration menu. The Bluetooth system automatically restores the default settings and turns off.

14. MAINTENANCE AND CARE

14.1 Outer Shell

Use a soft cloth and a small amount of water to remove bugs from the exterior.

Note: Never use gasoline, diesel fuel, thinners or solvents to clean the helmet. These substances can cause serious damage to the helmet, even though the resulting damage may not be visible. The full safety function of the helmet can then no longer be guaranteed.

14.2 Inner Lining

The inner lining of the helmet is completely removable. Its headliner can be washed by hand using mild soap at a maximum temperature of 30°C (86°F). Allow the lining to dry at room temperature.

14.3 Storing the Helmet

Store the helmet in a dry, dark, well-ventilated location, out of the reach of children and animals. Always position the helmet so that it cannot fall to the floor. Damage that occurs in this way is not covered by the warranty.

QUICK REFERENCE

Type	Operation	Button Command
Basic Function	Power on	Press and hold the Center Button and the (+) Button for 1 second
	Power off	Tap the Center Button and the (+) Button
	Volume up/down	Tap the (+) Button or the (-) Button
Mobile Phone	Answer phone call	Tap the Center Button
	End phone call	Press and hold the Center Button for 2 seconds
	Voice dial	Press and hold the Center Button for 3 seconds
	Speed dial	Press and hold the (+) Button for 3 seconds
	Reject phone call	Press and hold the Center Button for 2 seconds
Music	Play/Pause music	Press and hold the Center Button for 1 second
	Track forward/back	Press and hold the (+) Button or the (-) Button for 1 second

Type	Operation	Button Command
Intercom	Intercom pairing	Press and hold the Center Button for 5 seconds
		Tap the Center Button of any one of the two Bluetooth systems
	Start/End each intercom	Tap the Center Button
FM Radio	FM radio on/off	Press and hold the (-) Button for 1 second
	Select preset	Press and hold the Center Button for 1 second
	Seek forward/backward	Double tap the (+) Button or the (-) Button
	Scan up FM band/stop scanning	Press and hold the (+) Button for 1 second

SENA

Copyright © 2021 Sena Technologies, Inc.
All rights reserved.

© 1998–2021 Sena Technologies, Inc. All rights reserved.

Sena Technologies, Inc. reserves the right to make any changes and improvements to its product without providing prior notice.

Sena™ is a trademark of Sena Technologies, Inc. or its subsidiaries in the USA and other countries. SF1™, SF2™, SF4™, SFR™, SRL™, Momentum™, Momentum INC™, Momentum Lite™, Momentum Pro™, Momentum INC Pro™, Momentum EVO™, Cavalry™, Latitude SR™, Latitude SX™, Latitude S1™, 30K™, 33i™, 50S™, 50R™, 5S™, 20S EVO™, 20S™, 10S™, 10C™, 10C PRO™, ProRide EVO™, 10C EVO™, 10U™, 10Upad™, 10R™, 3S™, 3S PLUS™, SMH5™, SMH5-FM™, SMH5 MultiCom™, SMH10™, SMH10R™, SPH10™, SPH10H-FM™, Savage™, Prism Tube WiFi™, Prism™, Bluetooth Audio Pack for GoPro®, R1™, R1 EVO™, R1 EVO CS™, M1™, M1 EVO™, RUMBA™, RC1™, RC3™, RC4™, Handlebar Remote™, Wristband Remote™, PowerPro Mount™, Powerbank™, FreeWire™, WiFi Docking Station™, WiFi Sync Cable™, WiFi Adapter™, +mesh™, +Mesh Universal™, MeshPort Blue™, MeshPort Red™, Econo™, OUTRUSH™, OUTRUSH R™, OUTSTAR™, EcoCom™, Parani A10™, Parani A20™, Parani M10™, pi™, Snowtalk™, Snowtalk2™, SR10™, SR10i™, SM10™, SPIDER RT1™, SPIDER ST1™, X1™, X1 Pro™, X1S™, Expand™, Expand Boom™, Bluetooth Mic & Intercom™, Tufftalk™, Tufftalk Lite™, Tufftalk M™ are trademarks of Sena Technologies, Inc. or its subsidiaries. These trademarks may not be used without the express permission of Sena.

GoPro® is a registered trademark of Woodman Labs of San Mateo, California. Sena Technologies, Inc. ("Sena") is not affiliated with Woodman Labs, Inc. The Sena Bluetooth Pack for GoPro® is an aftermarket accessory specially designed and manufactured by Sena Technologies, Inc. for the GoPro® Hero3 and Hero4 allowing for Bluetooth capabilities.

The Bluetooth® word mark and logos are owned by the Bluetooth SIG, Inc. and any use of such marks by Sena is under license. iPhone® and iPod® touch are registered trademarks of Apple Inc.

Address: 152 Technology Drive Irvine, CA 92618

SENA