

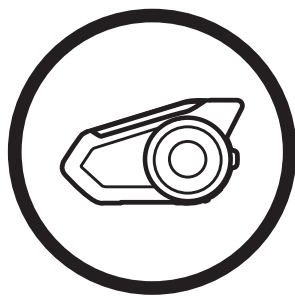


*Boom!*TM *Audio* 30K

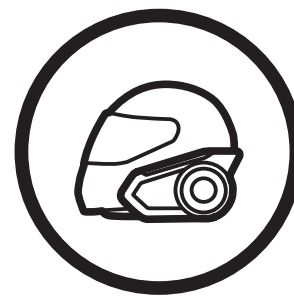
MOTORCYCLE BLUETOOTH
COMMUNICATION SYSTEM
WITH MESH INTERCOMTM



**CLICK
ANY
SECTION
TO
BEGIN**



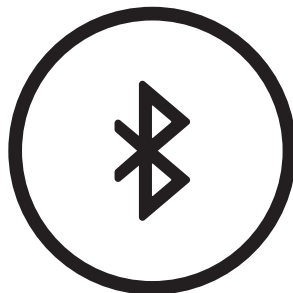
**ABOUT THE
HEADSET**



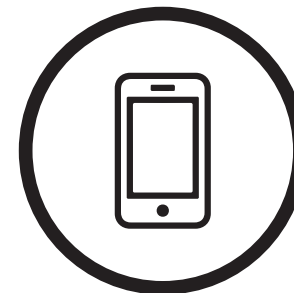
**INSTALLING
THE HEADSET**



**GETTING
STARTED**



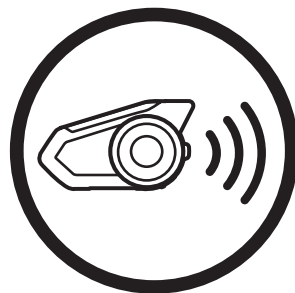
**PAIRING WITH
DEVICES**



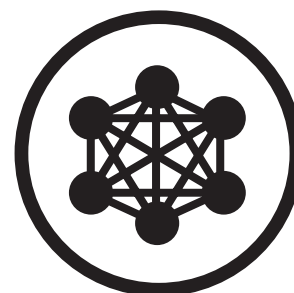
**MOBILE
PHONE USAGE**



**STEREO
MUSIC**



**INTERCOM
SETUP**



**MESH
INTERCOM**



**AUDIO
MULTITASKING**



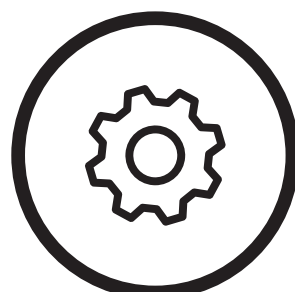
**USING THE
FM RADIO**



AMBIENT MODE



**VOICE
COMMAND**



**GENERAL
SETTINGS**



**REMOTE
CONTROL**



**TROUBLE-
SHOOTING**

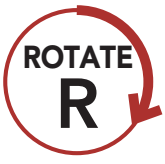
LEGEND:



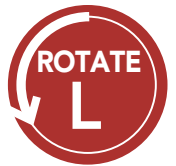
Tap button/Jog Dial the specified number of times



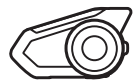
Press and Hold button/Jog Dial for the specified amount of time



Rotate Jog Dial clockwise (right) or counterclockwise (left).



Rotate while Pressing Jog Dial clockwise (right) or counterclockwise (left).

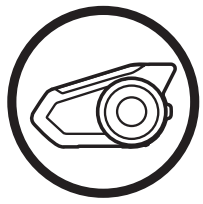


"Hello"

Audible prompt from the headset

TABLE OF CONTENTS

SAFETY PRECAUTIONS **9**



1. ABOUT THE MOTORCYCLE BLUETOOTH COMMUNICATION SYSTEM WITH MESH INTERCOM™ **12**

- 1.1 Product Details** **12**
 - 1.1.1 Headset Main Unit 12
 - 1.1.2 Universal Clamp Kit 12
- 1.2 Package Contents** **13**



2. INSTALLING THE HEADSET ON YOUR HELMET **15**

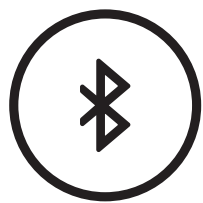
- 2.1 Helmet Installation** **15**
- 2.2 Using the Glued Surface Mounting
Adapter** **18**
- 2.3 Switching the Microphone** **20**
 - 2.3.1 Wired Boom Microphone 21
 - 2.3.2 Wired Microphone 21
- 2.4 Earbuds** **22**
- 2.5 External Mesh Intercom Antenna** **22**



3. GETTING STARTED **23**

- 3.1 Button Functions** **23**
- 3.2 Powering On and Off** **24**
- 3.3 Charging** **25**
- 3.4 Checking the Battery Level** **26**
- 3.5 Volume Adjustment** **28**
- 3.6 Downloadable Software** **29**
 - 3.6.1 Boom Audio Bluetooth Device Manager 29
 - 3.6.2 Sena Smartphone App 29
- 3.7 Configuration Menu** **31**

TABLE OF CONTENTS CONTINUED



4. PAIRING THE HEADSET WITH OTHER BLUETOOTH DEVICES 34

- 4.1 Mobile Phone 35
- 4.2 Pairing with the H-D WHIM Wireless Headset Interface Module 36
- 4.3 Additional Mobile Phones, MP3 Player 37
- 4.4 Advanced Selective Pairing: Hands-Free or A2DP Stereo 38
 - 4.4.1 Phone Selective Pairing - Hands-Free Profile 38
 - 4.4.2 Media Selective Pairing - A2DP Profile 39
- 4.5 GPS Pairing 41



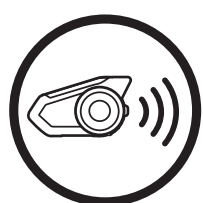
5. MOBILE PHONE USAGE 43

- 5.1 Making and Answering Calls 43
- 5.2 Speed Dialing 44
 - 5.2.1 Assigning Speed Dial Presets 44
 - 5.2.2 Using Speed Dial Presets 44
- 5.3 VOX Phone (Default: Enable) 46



6. STEREO MUSIC 47

- 6.1 Playing Music with Bluetooth Devices 47
- 6.2 Playing Music with non-Bluetooth Devices 48
- 6.3 Music Sharing 49
- 6.4 Audio Boost (Default: Disable) 51
- 6.5 Smart Volume Control (Default: Disable) 51

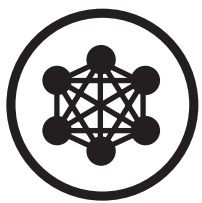


7. BLUETOOTH INTERCOM SETUP 51

- 7.1 Intercom Pairing 52
- 7.2 Two-Way Intercom 55

TABLE OF CONTENTS CONTINUED

7.3	Multi-Way Intercom	56
7.3.1	Starting a Three-Way Intercom Conference	56
7.3.2	Starting a Four-Way Intercom Conference	58
7.3.3	Ending Multi-Way Intercom	59
7.4	Three-Way Conference Phone Call with Intercom Users	59
7.5	Group Intercom	61
7.6	Universal Intercom	62
7.7	VOX Intercom (Default: Disable)	65
7.8	Intercom VOX Sensitivity (Default: 3)	66
7.9	HD Intercom (Default: Enable)	66
7.10	Advanced Noise Control™ (Default: Enable)	67



8. MESH INTERCOM **68**

8.1	What is Mesh Intercom?	68
8.2	Mesh Intercom Mode (Default: Public Mode)	69
8.2.1	Public Mode	69
8.2.2	Private Mode	70
8.2.3	Guest Mode (Default: Disable)	71
8.3	Using the Mesh	72
8.3.1	Creating the Mesh	72
8.3.2	Join an Existing Mesh	73
8.3.3	Quit the Mesh	74
8.3.4	Toggle Public Mode / Private Mode	75
8.3.5	Toggle Public Mode / Guest Mode	76
8.3.6	Mic Enable/Disable (Default: Enable)	76
8.4	Mesh Intercom Conference with Bluetooth Intercom Participant	77

TABLE OF CONTENTS CONTINUED



9. AUDIO MULTITASKING 78

- 9.1 Audio Multitasking Settings 78
- 9.2 Intercom-Audio Overlay Sensitivity (Default: 3) 79
- 9.3 Audio Overlay Volume Management (Default: Disable) 79



10. USING THE FM RADIO 80

- 10.1 FM Radio On/Off 80
- 10.2 Seek and Save Radio Stations 81
- 10.3 Scan and Save Radio Stations 83
- 10.4 Temporary Station Preset 84
- 10.5 Navigating Preset Stations 85
- 10.6 Region Selection (Default: Worldwide) 85
- 10.7 Radio Data System (RDS) Alternative Frequency (AF) Setting (Default: Disable) 86
- 10.8 FM Station Guide (Default: Enable) 86

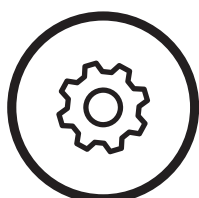


11. AMBIENT MODE 87



12. VOICE COMMAND 88

- 12.1 Voice Command Setting (Default: Enable) 90



13. GENERAL SETTINGS 91

- 13.1 Function Priority 91
- 13.2 Firmware Upgrades 91
- 13.3 Voice Prompts (Default: Enable) 92
- 13.4 Sidetone (Default: Disable) 92
- 13.5 Delete All Bluetooth Pairing Information 93

TABLE OF CONTENTS CONTINUED



14. REMOTE CONTROL 94

14.1 Pairing with the Remote Control 94



15. TROUBLESHOOTING 96

15.1 Fault Reset 96

15.2 Factory Reset 97

CERTIFICATION AND SAFETY APPROVALS 98

LIMITED PRODUCT WARRANTY DISCLAIMERS, AND LIMITATIONS 100

SAFETY PRECAUTIONS

Please ensure that the product is properly used by observing the safety precautions below to prevent any risk of serious injury, death and/or damage to property.

Hazard alert signal words

The following safety symbols and signal words are used in this manual.

⚠ WARNING: Indicates a potential hazardous situations that, if not avoided, could result in death or serious injury.

⚠ CAUTION: Indicates a potential hazardous situation that, if not avoided, could result in minor or moderate injury.

NOTICE: Indicates information considered important, but not hazard-related. If not avoided, it could cause damage to your product.

Note: Notes, usage tips, or additional information

Product Use

Observe the following precautions to avoid injury or damage to your product while using the product.

⚠ WARNING

- Use of the product at a high volume for a long period of time may damage your eardrums or hearing ability.
- If the product emits an unusual smell, feels hot, or appears abnormal in any other way while using or charging, stop using it immediately. It may cause damage, explosion, or fire. Contact your sales location if any of these problems are observed.
- Careless use of the product on the road is risky and may result in serious injury, death or damage. You must heed all safety precautions in all documents that come with this product. This will help minimize the chance these risks may occur while riding.
- In any place where wireless communication is prohibited, such as hospitals or airplanes, turn off the power. In a place where wireless communication is prohibited, electromagnetic waves may cause hazards or accidents.
- Before riding, fasten the product from the helmet, and double-check that it is properly fastened. Separation of the product while riding will cause damage to the product and may result in an accident.
- Do not use the product in an explosive atmosphere. If you are in such a location, turn off the power and heed any regulations, instructions, and signs in the area.
- When you use the product while you operating any vehicle or equipment such as motorcycles, scooters, mopeds, ATVs, or quadbikes (hereinafter called "transportation means"), you need to follow the safety precautions provided by the manufacturer of the vehicle.

- When you use the product, use good judgment; never use it under the influence of alcohol or drugs or when you are extremely tired.

NOTICE

- Attaching the product to the helmet is considered a modification to the helmet and may void your helmet's warranty or compromise your helmet's functionality. This may entail risks during an accident, so be fully aware of this fact before using the product. Should you not accept this fact, you may return the product for a full refund.
- In some regions, it is prohibited by law to ride motorcycles while wearing headsets or earbuds. Therefore be certain you are aware of all relevant laws in the region where you are using the product and are sure that you comply with them.
- The headset is for motorcycle helmets only. To install the headset, you must follow the installation instructions shown in the User's Guide.
- Do not impact the product with sharp tools as this may damage the product.
- Keep product away from pets or small children. They may damage the product.
- Any changes or modifications to the equipment not expressly approved by the party responsible for compliance could void the limited warranty to operate the equipment.

Battery

Your product has a built-in battery. Be careful to heed all safety information in this guide. Failure to carefully observe the safety precautions can cause battery heat generation, bursting, fire and serious personal injury.

⚠ WARNING

- Do not use the product in direct sunlight for a long period of time. Doing so can damage the product and generate heat that can cause burns.
- Do not use or store the product inside cars in hot weather. It may cause the battery to generate heat, rupture, or ignite.
- Do not continue charging the battery if it does not recharge within the specified charging time. Doing so may cause the battery to become hot, explode, or ignite.
- Do not leave the product near open flames. Do not dispose of the product in a fire. It may cause the battery to become hot, explode, or ignite and cause serious injury.
- Never attempt to charge a battery with the charger which has been physically damaged. It may cause explosion and/or accidents.

Product Storage and Management

Take the following precautions to avoid personal injury or damage to your product while storing and maintaining the product.

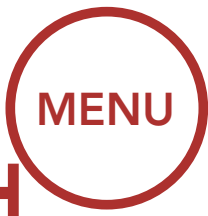
NOTICE

- Keep the product free of dust. Dust may damage mechanical and electronic parts of the product.
- The product should be stored at room temperature. Do not expose the product to extremely high or low temperature as this may reduce the life span of electronic devices, damage the battery, and/or melt plastic parts of the product.

- Do not clean the product with cleaning solvents, toxic chemicals, or strong detergents as this may damage the product.
- Do not paint the product. Paint may obstruct moving parts or interfere with the normal operation of the product.
- Do not drop or otherwise shock the product. It may damage the product or its internal electronic circuits.
- Do not disassemble, repair or modify the product as this may damage the product and invalidate the product warranty.
- Do not store the product in humid environments, especially for long periods of time. It may damage the internal electronic circuits.
- Battery performance will deteriorate over time if stored for a long period of time without being used.

Note

- Do not dispose of the product with household waste. The built-in battery is not to be disposed of in municipal waste stream and requires separate collection. Disposal of the product should be done in accordance with the local regulations.



1. ABOUT THE MOTORCYCLE BLUETOOTH COMMUNICATION SYSTEM WITH MESH INTERCOM™

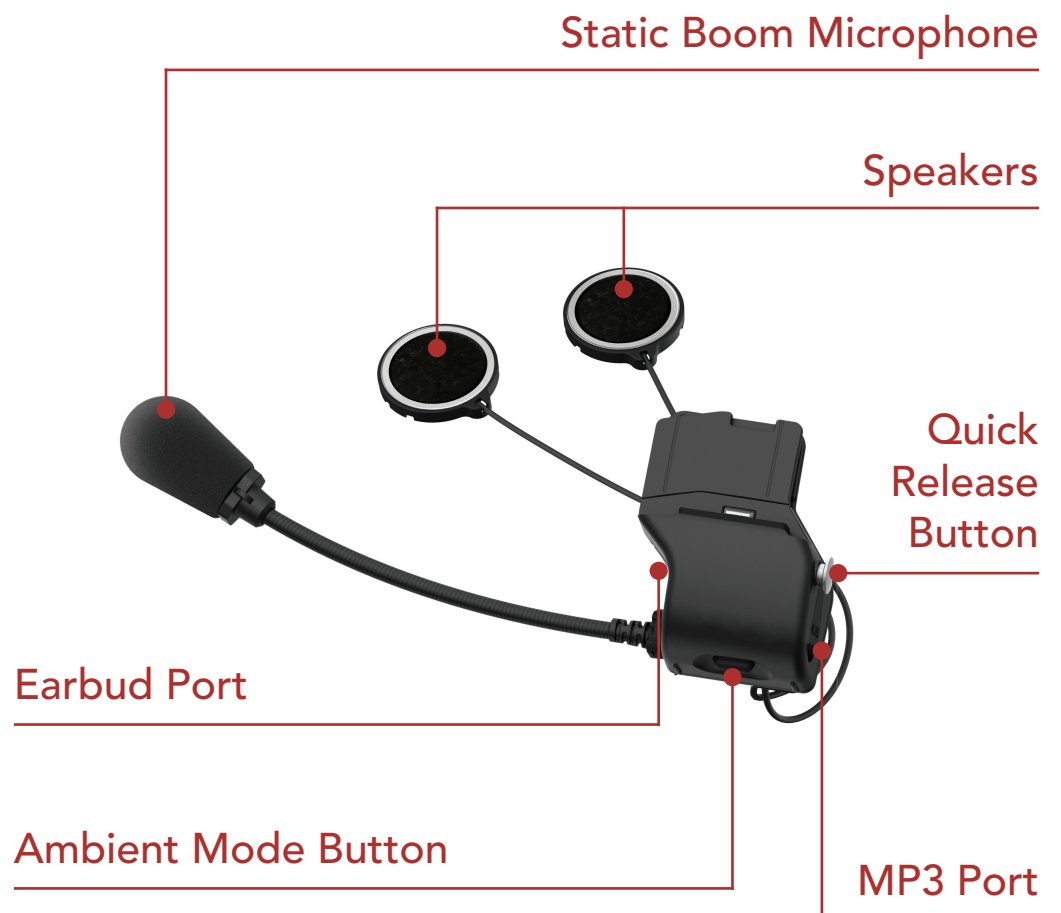
- Product Details
- Package Contents

1.1 Product Details

1.1.1 Headset Main Unit



1.1.2 Universal Clamp Kit





1. ABOUT THE MOTORCYCLE BLUETOOTH COMMUNICATION SYSTEM WITH MESH INTERCOM™

MENU

Product Details

Package Contents

1.2 Package Contents

<ul style="list-style-type: none">• Boom! Audio 30K Headset Main Unit	
<ul style="list-style-type: none">• Universal Helmet Clamp	
<ul style="list-style-type: none">• Wired Boom Microphone	
<ul style="list-style-type: none">• Wired Microphone	
<ul style="list-style-type: none">• Hook and Loop Fastener for Boom Microphone	
<ul style="list-style-type: none">• Hook and Loop Fastener for Wired Microphone	
<ul style="list-style-type: none">• Microphone Sponges	
<ul style="list-style-type: none">• Glued Surface Mounting Adapter	
<ul style="list-style-type: none">• Foam Speaker Covers	



1. ABOUT THE MOTORCYCLE BLUETOOTH COMMUNICATION SYSTEM WITH MESH INTERCOM™



**Product
Details**

**Package
Contents**

• Speaker Pads	
• Hook and Loop Fasteners for Speakers	
• Boom Microphone Holder	
• Hook and Loop Fastener for Holder	
• 2.5 to 3.5 mm Audio Cable	
• Rubber Pads	
• Allen Wrench	
• Speaker Port Cover	
• USB Power & Data Cable (Micro USB Type)	
• Cigarette Charger	



2. INSTALLING THE HEADSET ON YOUR HELMET

2.1 Helmet Installation

Helmet
Installation

Using the
Glued Surface
Mounting
Adapter

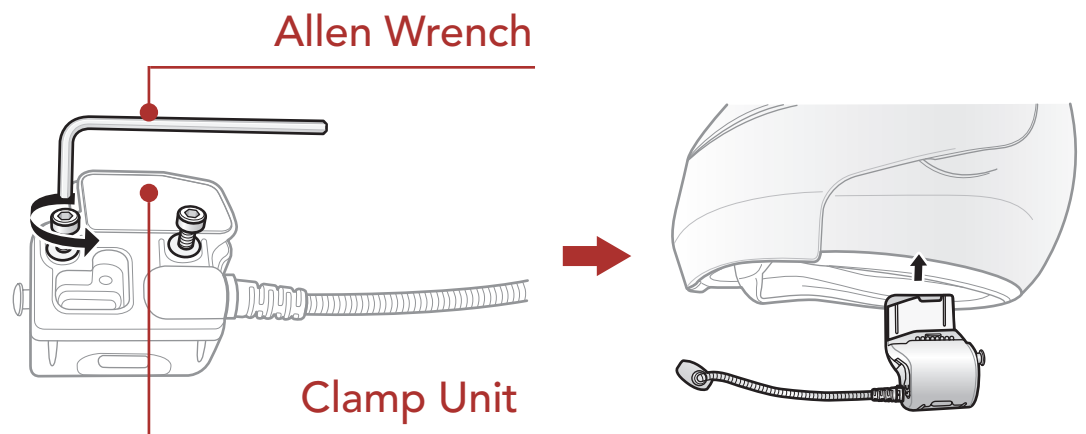
Switching the
Microphone

Earbuds

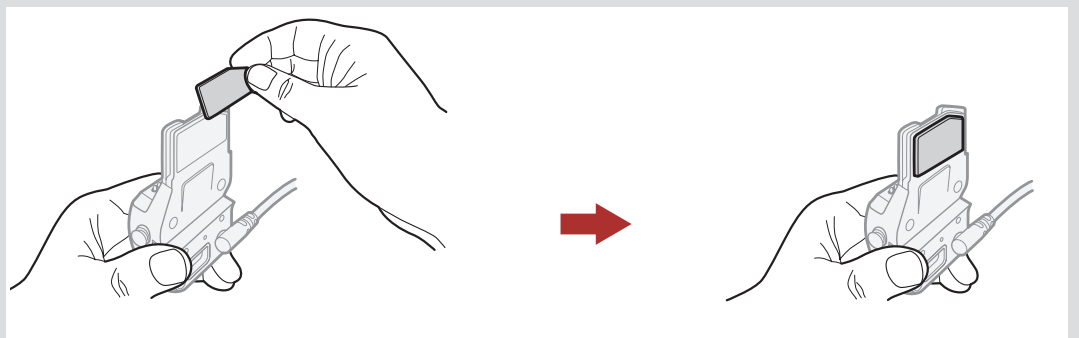
External Mesh
Intercom
Antenna

To securely install the headset on the helmet, please follow this procedure.

1. Insert the back plate of the clamp unit between the internal padding and the external shell of the helmet, and tighten the two screws.



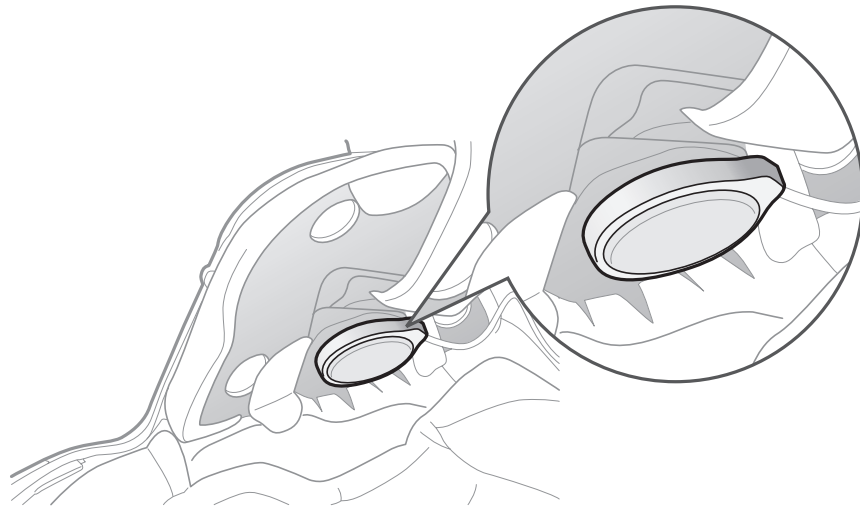
Note: Depending on the size and shape of your helmet, you may need to change the thickness of the rubber pad between the clamp plates using the two extra rubber pads in the box. To increase the overall thickness, attach the thinner one to the original rubber pad or replace the original rubber pad with the thicker one.





2. INSTALLING THE HEADSET ON YOUR HELMET

- Place the helmet speakers along with the hook and loop fasteners, centered to your ear, in the ear pockets of the helmet. If the helmet has deep ear pockets, you can use the speaker pads to place the speakers closer to your ears.



Helmet
Installation

Using the
Glued Surface
Mounting
Adapter

Switching the
Microphone

Earbuds

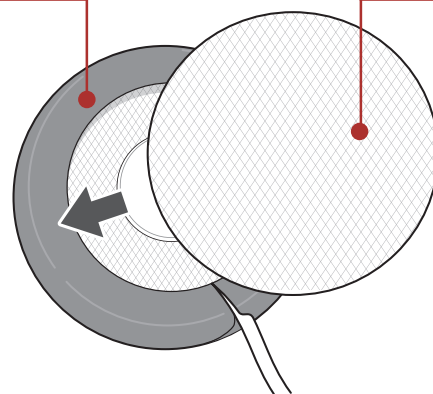
External Mesh
Intercom
Antenna

Note:

- The speaker with the shorter wire is for the left ear and the speaker with the longer one is for the right ear.
- To enhance the audio quality, you can make use of the foam speaker covers. Cover each speaker with the foam and attach the hook fastener at the back of the speaker. Then place the speakers in the helmet as described above. Foam covered speakers work most effectively when they are slightly touching your ears.

Foam Speaker Cover

Hook Fastener





2. INSTALLING THE HEADSET ON YOUR HELMET

Helmet
Installation

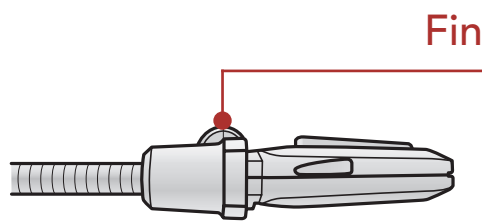
Using the
Glued Surface
Mounting
Adapter

Switching the
Microphone

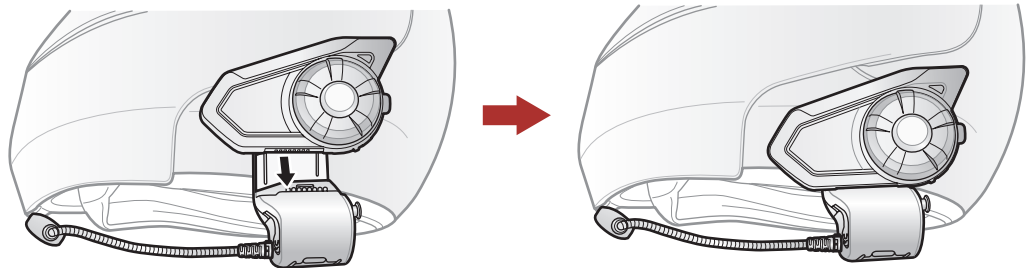
Earbuds

External Mesh
Intercom
Antenna

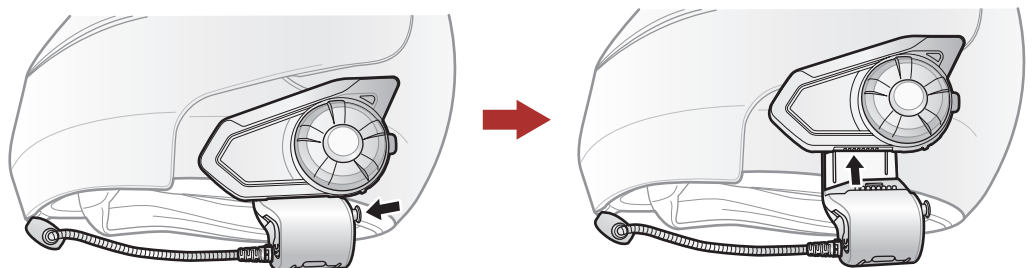
- Make sure that the microphone is located properly close to your mouth when you wear the helmet. Adjust the direction of the microphone so that the fin side of the microphone is facing outward, away from your lips.



3. Attach the headset main unit to the clamp unit. Slide the main unit down onto the clamp unit until it clicks firmly into the bottom portion of the clamp unit.



4. To remove the main unit from the clamp unit, press the Quick Release Button to slide it off the clamp unit.



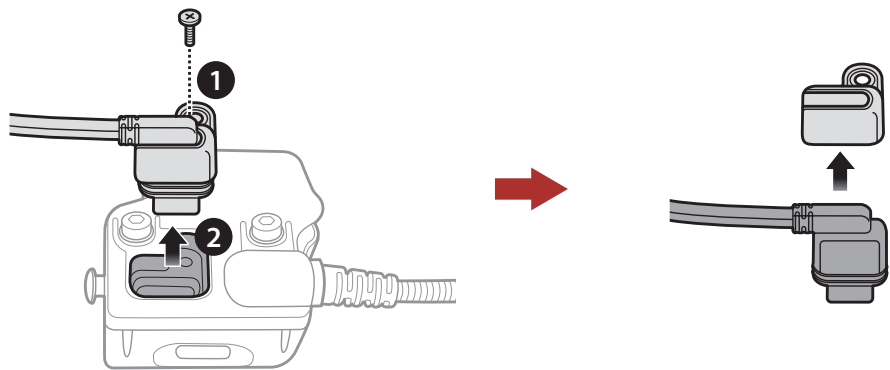


2. INSTALLING THE HEADSET ON YOUR HELMET

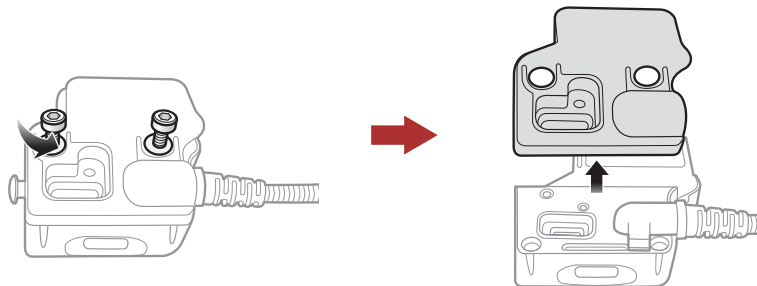
2.2 Using the Glued Surface Mounting Adapter

If you have any problem equipping the clamp unit on the helmet for any reason, you may use the glued surface mounting adapter to attach the clamp unit on the external surface of the helmet.

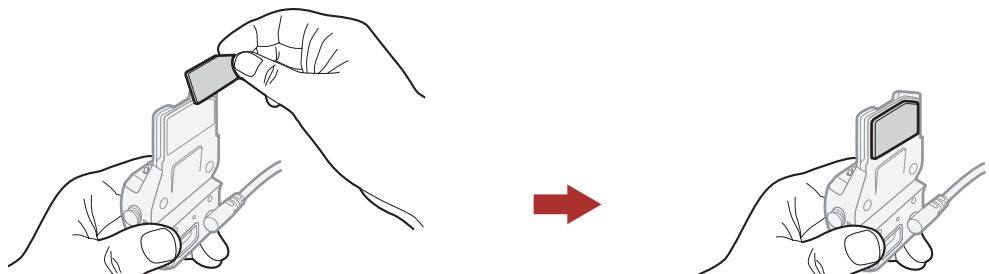
1. Remove the speaker unit.



2. Remove the back plate.



3. Remove the rubber pad and replace it with the thicker rubber pad included in the package.



4. Hook on the adapter to the clamp unit then screw in the glued external adapter to the clamp unit.

Helmet
Installation

Using the
Glued Surface
Mounting
Adapter

Switching the
Microphone

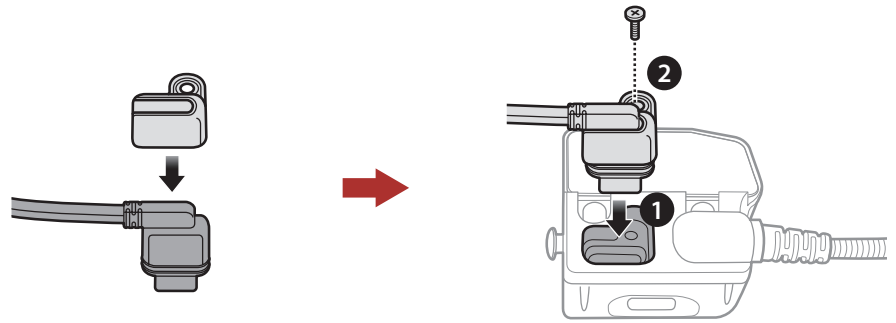
Earbuds

External Mesh
Intercom
Antenna



2. INSTALLING THE HEADSET ON YOUR HELMET

- Reconnect the speaker cable to the speaker port.



Helmet
Installation

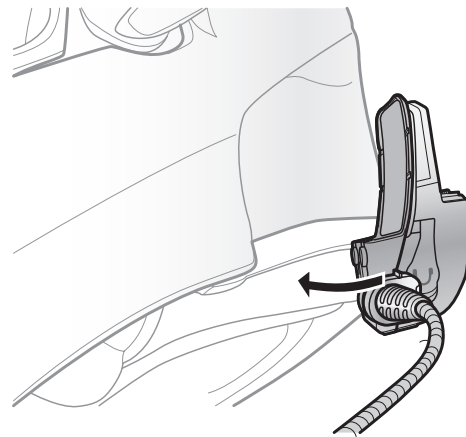
Using the
Glued Surface
Mounting
Adapter

Switching the
Microphone

Earbuds

External Mesh
Intercom
Antenna

- Locate a proper surface on the helmet to attach the unit then clean the helmet surface location with a moistened towel and allow to dry thoroughly.
- Peel off the cover of the adhesive tape of the adapter and attach the unit on the proper surface of your helmet.



⚠ Caution: Harley-Davidson recommends using the clamp unit. The glued surface mounting plate is provided for convenience, but is not the recommended mounting method. Harley-Davidson is not responsible for its use.

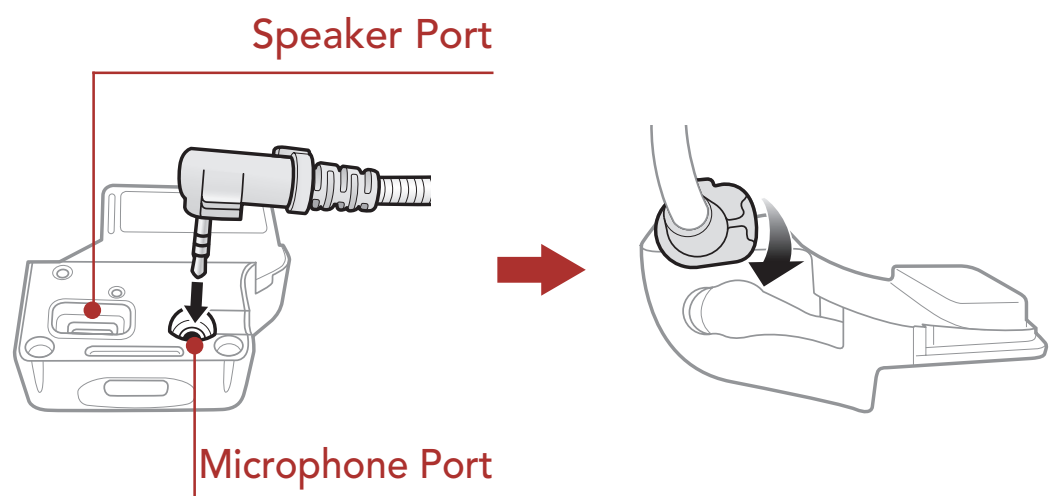


2. INSTALLING THE HEADSET ON YOUR HELMET

2.3 Switching the Microphone

If you want to use a different microphone instead of the static boom microphone, please refer to the following steps.

1. Remove the back plate of the clamp unit.
2. Connect the microphone according to your helmet type.
3. Lock the microphone to the clamp.
4. Reattach the back plate to cover the microphone and the speaker port.



Helmet
Installation

Using the
Glued Surface
Mounting
Adapter

Switching the
Microphone

Earbuds

External Mesh
Intercom
Antenna



2. INSTALLING THE HEADSET ON YOUR HELMET

Helmet
Installation

Using the
Glued Surface
Mounting
Adapter

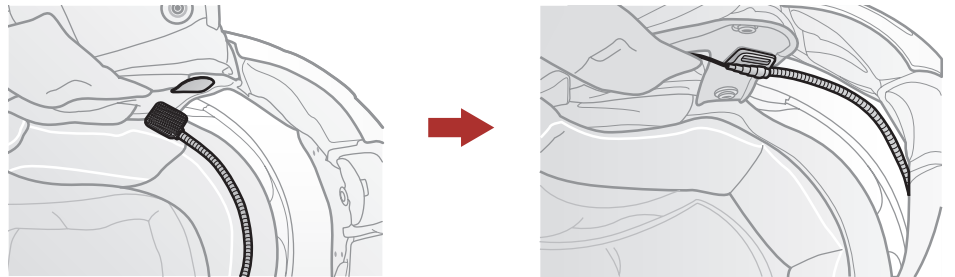
Switching the
Microphone

Earbuds

External Mesh
Intercom
Antenna

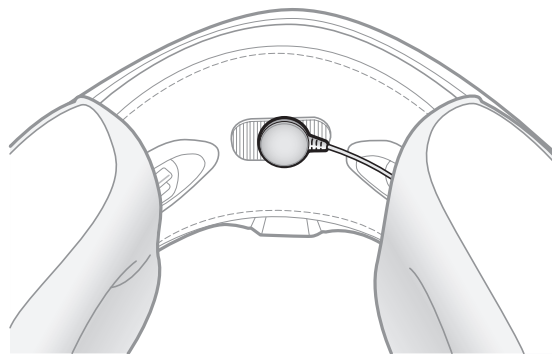
2.3.1 Wired Boom Microphone

When installing the included wired boom microphone, place the hook and loop fastener at the end of the boom microphone between the internal helmet cheek pad and the internal wall of the helmet shell. The boom microphone should be mounted so it is facing close to your mouth when you wear the helmet.



2.3.2 Wired Microphone

In case of the wired microphone, attach the enclosed hook and loop fastener for the wired microphone to the inside of the chin guard for full-face helmets. Place the wired microphone on the hook and loop fastener and connect it to the connector of the clamp unit.

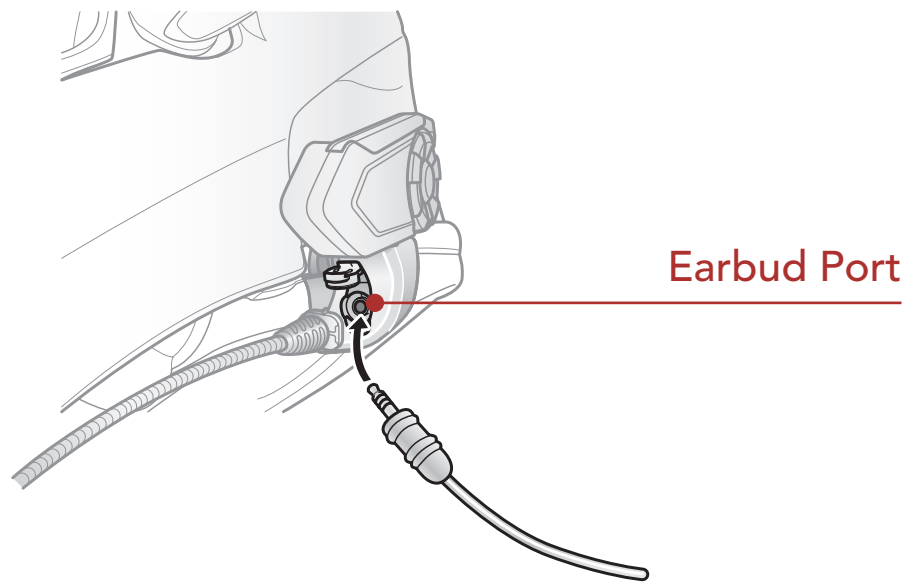




2. INSTALLING THE HEADSET ON YOUR HELMET

2.4 Earbuds

You can connect your earbuds to the clamp while having the speakers connected to the clamp. The sound of the earbuds will be active while the sound of the outer speakers becomes inactive.



Helmet
Installation

Using the
Glued Surface
Mounting
Adapter

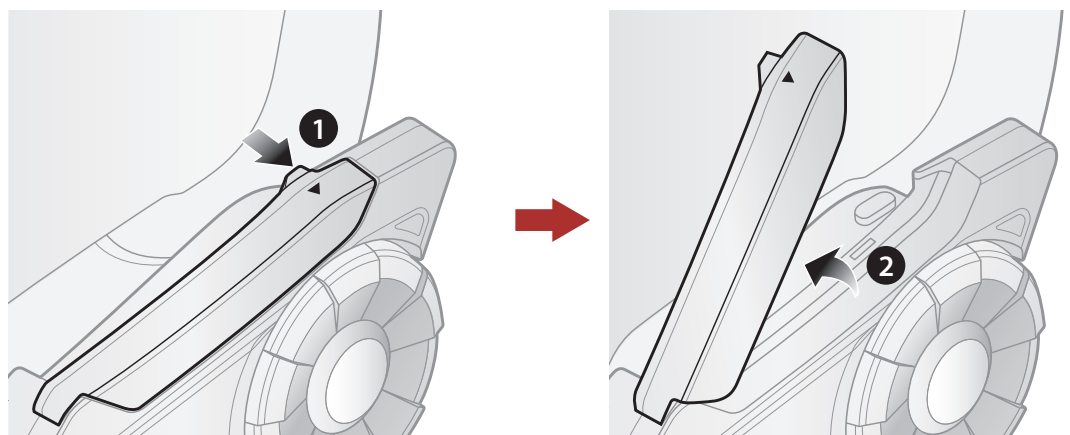
Switching the
Microphone

Earbuds

External Mesh
Intercom
Antenna

2.5 External Mesh Intercom Antenna

Pull the **Mesh Intercom** Antenna outwards slightly to unfold it.





3. GETTING STARTED

3.1 Button Functions

Button Functions

Powering On and Off

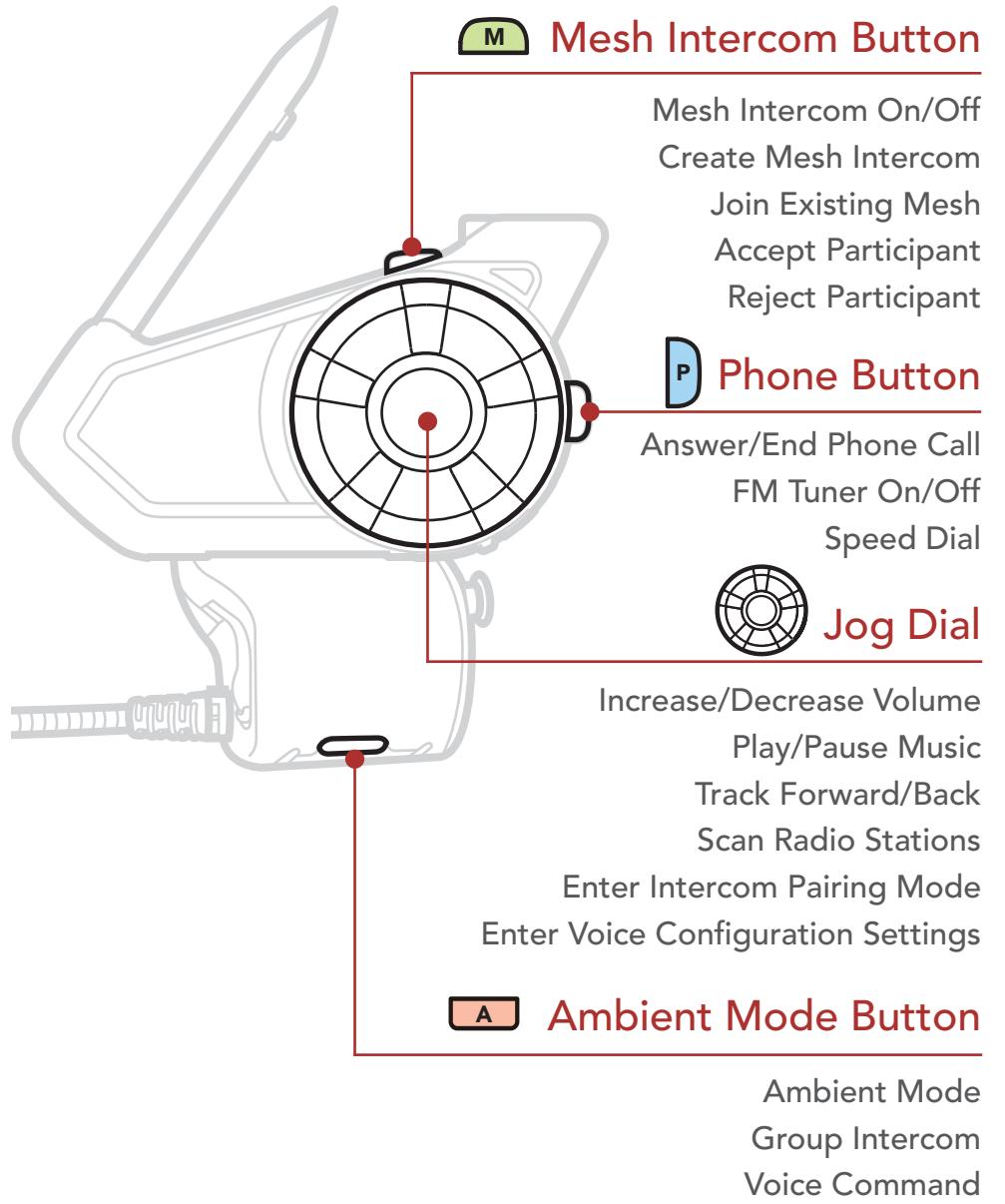
Charging

Checking the Battery Level

Volume Adjustment

Downloadable Software

Configuration Menu





3. GETTING STARTED

3.2 Powering On and Off

Press and hold the **Jog Dial** and **Phone Button** at the same time to turn the headset on or off.

Button Functions

Powering On and Off

Charging

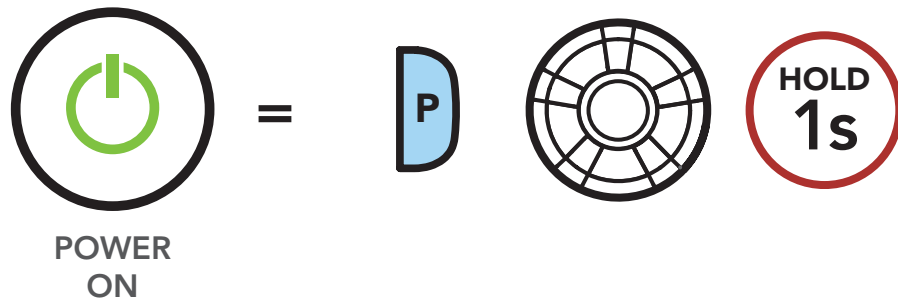
Checking the Battery Level

Volume Adjustment

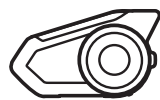
Downloadable Software

Configuration Menu

Powering On



"Preparing headset"



"Hello"

Powering Off



Note: If the Voice Command setting is disabled, the "Hello" voice prompt will be heard instantly after powering on the headset. Please refer to **Section 11: "Voice Command"** for more details.



3. GETTING STARTED

3.3 Charging

Charging the Headset

Button
Functions

Powering On
and Off

Charging

Checking the
Battery Level

Volume
Adjustment

Downloadable
Software

Configuration
Menu

DC Power Charging &
Firmware Upgrade Port



The headset will be fully charged in about 1.5 hours. (The charging time may vary depending on the charging method.)

Note:

- The headset includes a **Fast Charging** feature which allows it to charge quickly over a short period of time. For example, a user can get 5 hours of talk time after charging the headset for 20 minutes.
- Any 3rd party USB charger can be used with Harley-Davidson products if the charger is approved by either the FCC, CE, IC or other locally approved agencies that Harley-Davidson accepts.



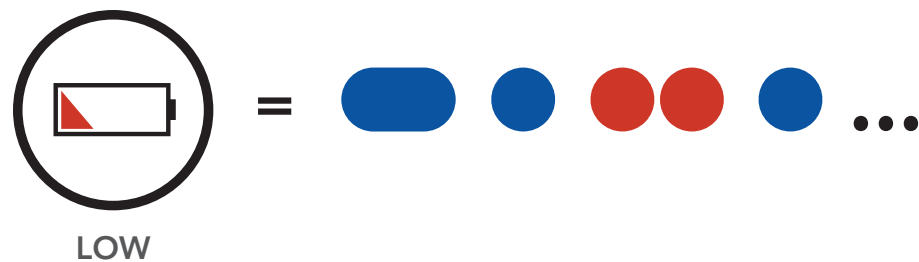
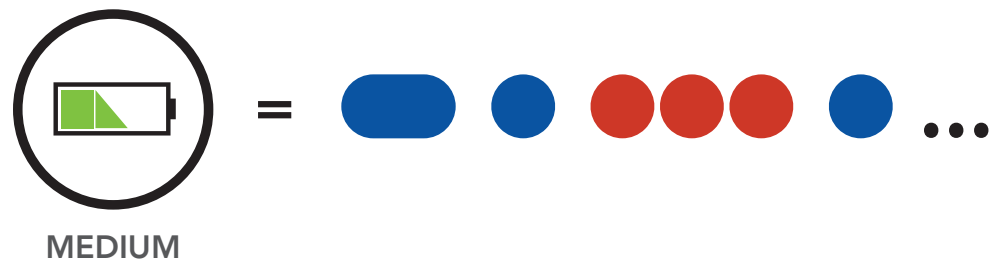
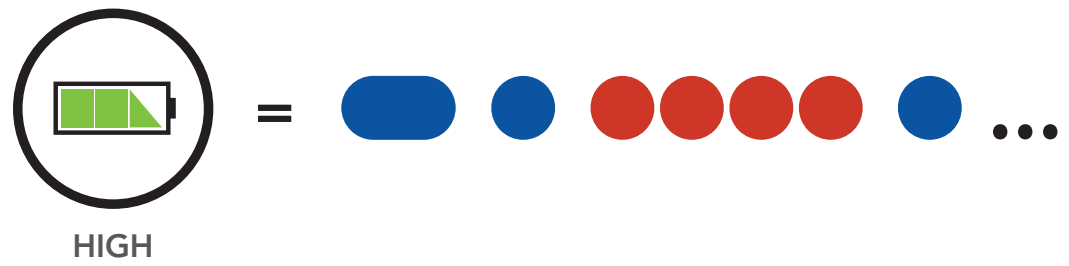
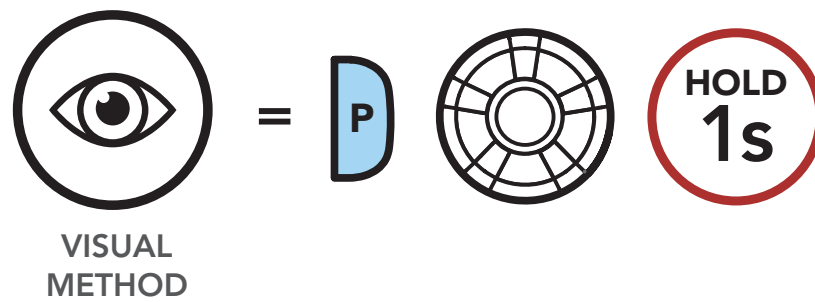
3. GETTING STARTED

3.4 Checking the Battery Level

There are two ways to check battery level:

1. Visually, with LEDs when powering on.

Battery Level - Visual Method



Button Functions

Powering On and Off

Charging

Checking the Battery Level

Volume Adjustment

Downloadable Software

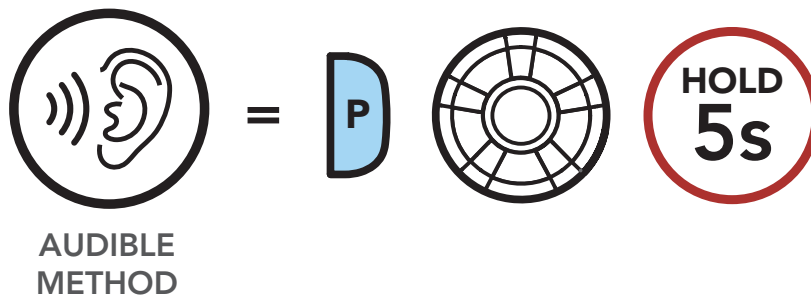
Configuration Menu



3. GETTING STARTED

2. Audible method: press and hold the **Phone Button** and **Jog Dial** for more than 5 seconds as the headset powers on. A prompt will announce the remaining battery level.

Battery Level - Audible Method



*"Battery level
high/medium/low"*

Note: When the battery is low while in use, you will hear a voice prompt saying **"Low battery"**.

Button
Functions

Powering On
and Off

Charging

Checking the
Battery Level

Volume
Adjustment

Downloadable
Software

Configuration
Menu



3. GETTING STARTED

3.5 Volume Adjustment

You can raise or lower the volume by rotating the **Jog Dial** clockwise or counterclockwise. Volume is set and maintained independently at different levels for each audio source (i.e., phone, intercom), even when the headset is rebooted.

Button Functions

Powering On and Off

Charging

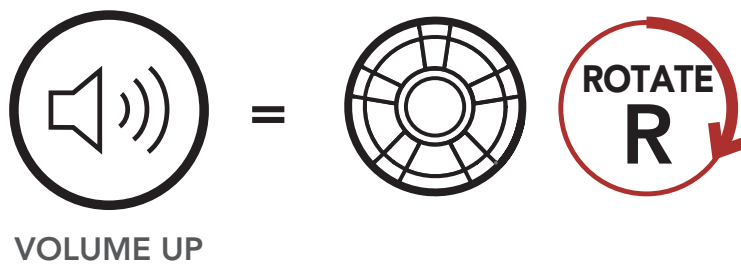
Checking the Battery Level

Volume Adjustment

Downloadable Software

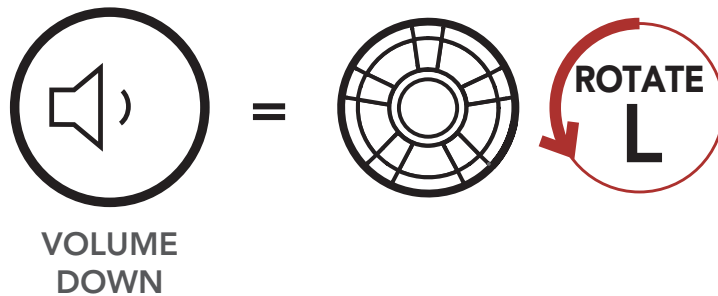
Configuration Menu

Volume Up



VOLUME UP

Volume Down



VOLUME DOWN



3. GETTING STARTED

3.6 Downloadable Software

3.6.1 Boom Audio Bluetooth Device Manager

The **Boom Audio Bluetooth Device Manager** allows you to upgrade the firmware and configure its settings directly from your PC or Apple computer. Using this software, you can assign speed dial presets, FM radio station presets and more. For more information on downloading the **Boom Audio Bluetooth Device Manager**, please visit oem.sena.com/harley-davidson.

[Click Here to Visit
oem.sena.com/harley-davidson](http://oem.sena.com/harley-davidson)

3.6.2 Sena Smartphone App

The **Sena Smartphone App** allows you to configure the headset settings, as well as access the User's Guide and Quick Start Guides. To do so, pair your mobile phone with your headset (please refer to **Section 4: "Pairing the Headset with Other Bluetooth Devices"** for more details). Run the **Sena Smartphone App** and configure the settings directly from your smartphone. You can download the **Sena Smartphone App** for Android and Apple operating systems from oem.sena.com/harley-davidson.



Download on the
App Store



GET IT ON
Google Play

Button
Functions

Powering On
and Off

Charging

Checking the
Battery Level

Volume
Adjustment

Downloadable
Software

Configuration
Menu



3. GETTING STARTED

Software Configuration Menu

Button Functions

Powering On and Off

Charging

Checking the Battery Level

Volume Adjustment

Downloadable Software

Configuration Menu

Configuration Setting	Enable/Disable or Execute
Speed Dial	Execute
Intercom-Audio Overlay Sensitivity	Execute
Audio Overlay Volume Management	Enable/Disable
Audio Boost	Enable/Disable
Smart Volume Control	Enable/Disable
VOX Phone	Enable/Disable
VOX Intercom	Enable/Disable
HD Intercom	Enable/Disable
Intercom VOX Sensitivity	Execute
Guest Mode	Enable/Disable
Voice Prompt	Enable/Disable
Voice Command	Enable/Disable
RDS AF Setting	Enable/Disable
FM Station Guide	Enable/Disable
Sidetone	Enable/Disable
Advanced Noise Control	Enable/Disable



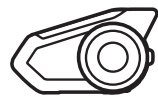
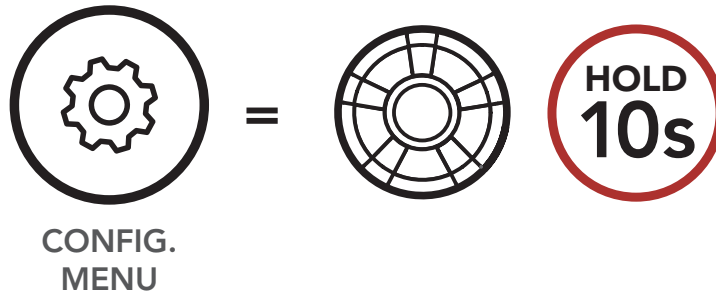
3. GETTING STARTED

3.7 Configuration Menu

The headset can be configured by following a series of voice prompts. Further details about each of these settings will be explained on the following pages.

1. To access the **Configuration Menu**, press and hold the **Jog Dial** for **10 seconds** until you hear the voice prompt, **"Configuration menu."**

Accessing the Configuration Menu



"Configuration menu"

Button Functions

Powering On and Off

Charging

Checking the Battery Level

Volume Adjustment

Downloadable Software

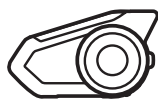
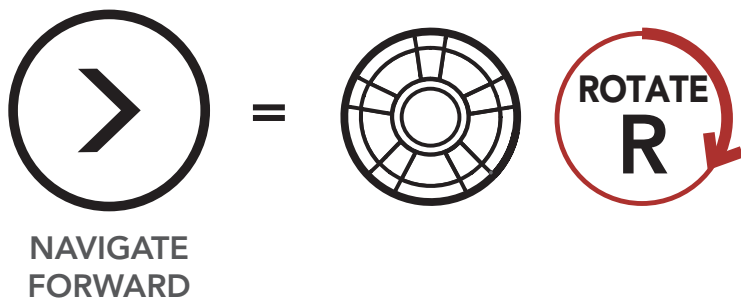
Configuration Menu



3. GETTING STARTED

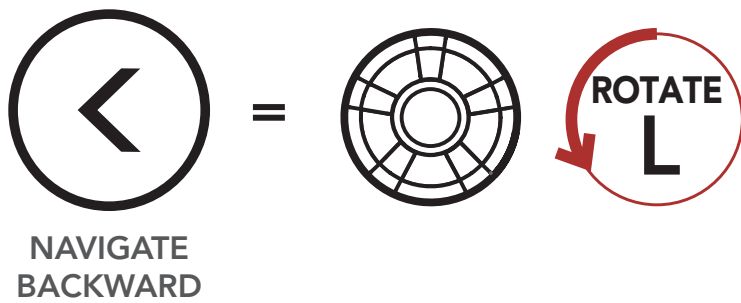
2. Rotate the **Jog Dial** clockwise or counterclockwise to navigate between the menus. You will hear voice prompts for each menu item. The list of functions is shown in the **"Headset Configuration Menu"** on page 33.

Navigating Forward through the Menu



"[Menu prompt]"

Navigating Backward through the Menu



"[Menu prompt]"

Button Functions

Powering On and Off

Charging

Checking the Battery Level

Volume Adjustment

Downloadable Software

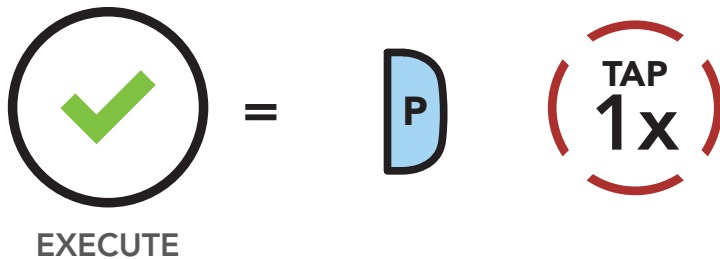
Configuration Menu



3. GETTING STARTED

3. You can enable the feature or execute the command by tapping the **Phone Button**.

Execute Menu Options



Button Functions

Powering On and Off

Charging

Checking the Battery Level

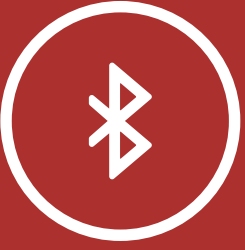
Volume Adjustment

Downloadable Software

Configuration Menu

Headset Configuration Menu

Rotate the Jog Dial clockwise or counterclockwise	Tap the Phone Button
Delete All Pairings	Execute
Remote Control Pairing	Execute
Universal Intercom Pairing	Execute
Exit Configuration	Execute



4. PAIRING THE HEADSET WITH OTHER BLUETOOTH DEVICES

Mobile Phone

Pairing with the H-D WHIM Wireless Headset Interface Module

Additional Mobile Phones, MP3 Player

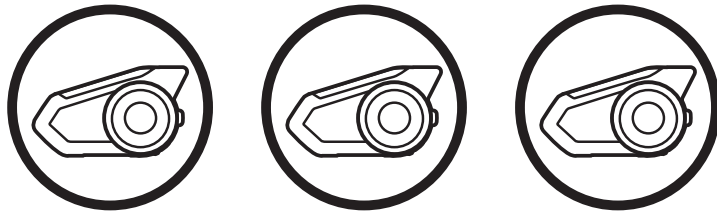
Advanced Selective Pairing: Hands-Free or A2DP Stereo

GPS Pairing

When using the headset with other Bluetooth devices for the first time, they'll need to be "paired." This enables them to recognize and communicate with one another whenever they're within range.

The headset can pair with multiple Bluetooth devices such as a mobile phone, GPS or MP3 player via **Mobile Phone Pairing, Second Mobile Phone Pairing and GPS Pairing**. The headset can also be paired with up to three other Boom! Audio headsets.

Pairs with up to three Boom! Audio Headsets



Also pairs with:

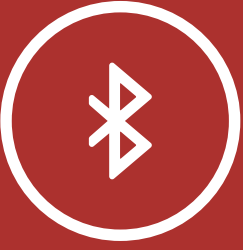


Mobile Phone

MP3 Player

GPS Devices

Note: Bluetooth Specifications: Bluetooth 2.4 GHz ~ 2.48 GHz / max output power 0.097mW



4. PAIRING THE HEADSET WITH OTHER BLUETOOTH DEVICES

Mobile Phone

Pairing with the H-D WHIM Wireless Headset Interface Module

Additional Mobile Phones, MP3 Player

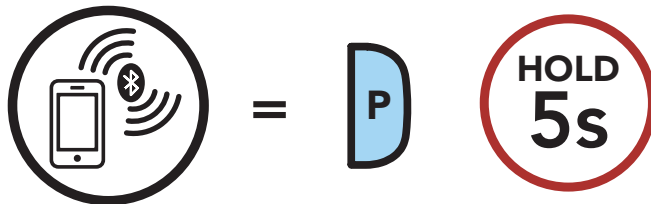
Advanced Selective Pairing: Hands-Free or A2DP Stereo

GPS Pairing

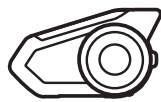
4.1 Mobile Phone

1. Execute **Phone Pairing** by holding down the **Phone Button** for **5 seconds**.

Mobile Phone Pairing



START PHONE PAIRING



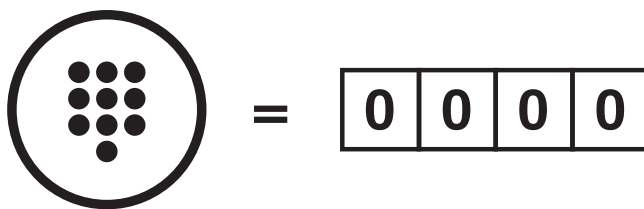
"Phone pairing"



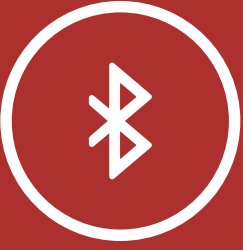
LED STATUS

Alternating blue and red flashing lights indicate **device is now discoverable.**

2. With your mobile phone in Bluetooth-pairing mode, select the headset in the list of devices detected.
3. If your mobile phone asks for a PIN, enter 0000.



PIN NUMBER



4. PAIRING THE HEADSET WITH OTHER BLUETOOTH DEVICES

4.2 Pairing with the H-D WHIM Wireless Headset Interface Module

Mobile Phone

Pairing with the H-D WHIM Wireless Headset Interface Module

Additional Mobile Phones, MP3 Player

Advanced Selective Pairing: Hands-Free or A2DP Stereo

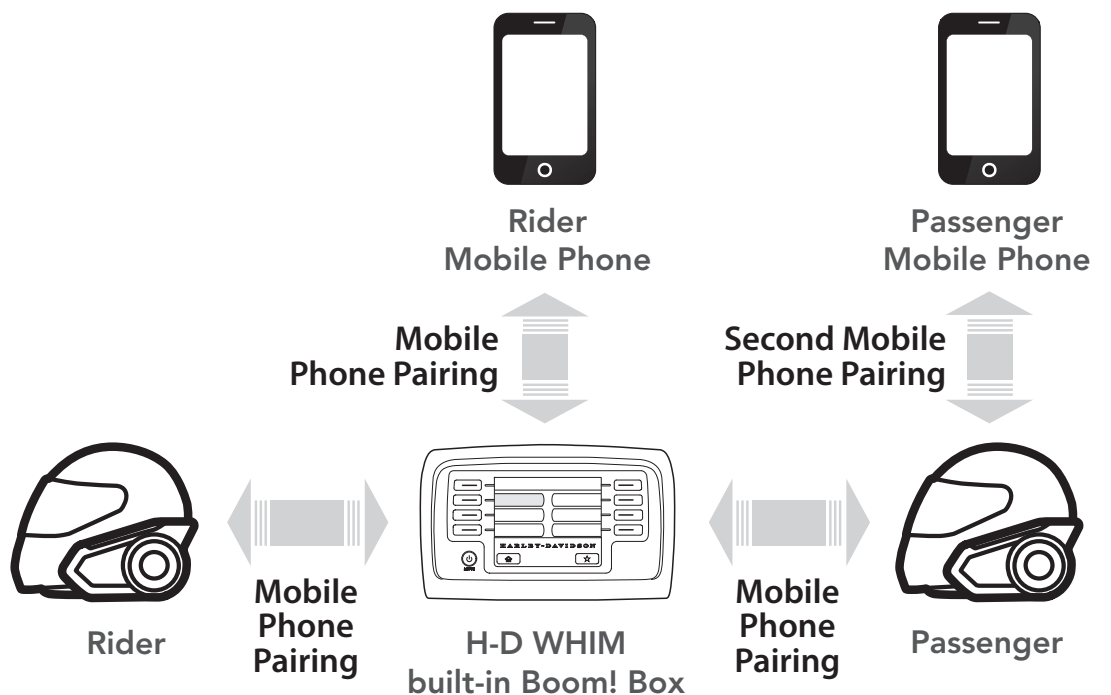
GPS Pairing

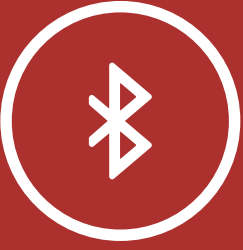
The H-D WHIM built-in Boom! Box is a Wireless Headset Interface for group communication. You can pair the headset with an H-D WHIM built-in Boom! Box by mobile phone pairing.

1. Press and hold the **Phone Button** for **5 seconds** and you will hear the voice prompt, **"Phone pairing"**.
2. Turn on the Boom! Box system and follow the **"Wireless Headset Setup"** procedure to complete the process. Please refer to the Boom! Box Owner's Manual for details.
3. When the pairing is completed, you will hear the voice prompt, **"Your headset is paired"**.
4. If the pairing process is not completed within three minutes, the headset will return to stand-by mode.

The H-D WHIM built-in Boom! Box can be connected to the rider and the passenger's headset. Also, the H-D WHIM built-in Boom! Box can be connected to the rider's mobile phone. The rider's headset should be paired first followed by the passenger's. Please refer to the Boom! Box Owner's Manual for details. You can listen to music, answer a mobile call, and have an intercom conversation via the H-D WHIM built-in Boom! Box for group communication as shown in the figure.

Parallel Connection of H-D WHIM built-in Boom! Box and Mobile Phone by Mobile Phone Pairing





4. PAIRING THE HEADSET WITH OTHER BLUETOOTH DEVICES

4.3 Additional Mobile Phones, MP3 Player

Mobile Phone

Pairing with the H-D WHIM Wireless Headset Interface Module

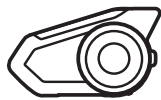
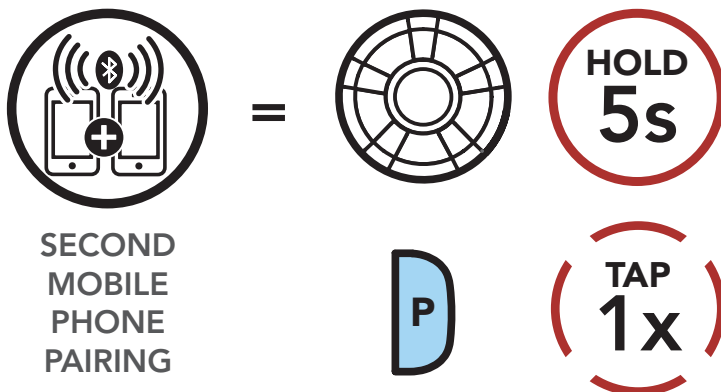
Additional Mobile Phones, MP3 Player

Advanced Selective Pairing: Hands-Free or A2DP Stereo

GPS Pairing

1. Execute **Second Mobile Phone Pairing** by holding down the **Jog Dial** for **5 seconds**. Tap the **Phone Button** once within **2 seconds**.

Second Mobile Phone Pairing



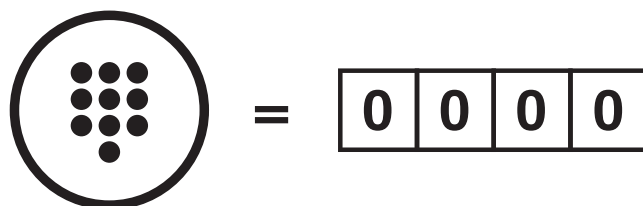
"Second mobile phone pairing"



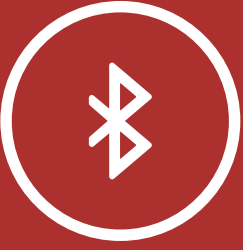
LED STATUS

= Blue flashing lights indicates device is now discoverable.

2. With your mobile phone in Bluetooth-pairing mode, select the headset in the list of devices detected.
3. If your mobile phone asks for a PIN, enter 0000.



PIN NUMBER



4. PAIRING THE HEADSET WITH OTHER BLUETOOTH DEVICES

Mobile Phone

Pairing with the H-D WHIM Wireless Headset Interface Module

Additional Mobile Phones, MP3 Player

Advanced Selective Pairing: Hands-Free or A2DP Stereo

GPS Pairing

4.4 Advanced Selective Pairing: Hands-Free or A2DP Stereo

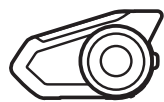
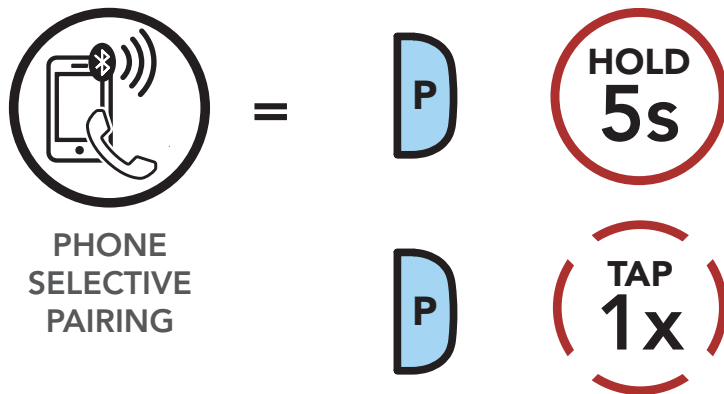
Phone Pairing allows the headset to establish two Bluetooth profiles: **Hands-Free** or **A2DP Stereo**.

Advanced Selective Pairing allows the headset to separate the profiles to enable connection with two devices.

4.4.1 Phone Selective Pairing - Hands-Free Profile

1. Execute **Phone Selective Pairing** by holding down the **Phone Button** for **5 seconds**. Tap the **Phone Button** once within **2 seconds**.

Phone Selective Pairing

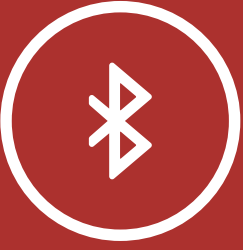


"Phone selective pairing"



LED STATUS

= Blue flashing lights indicates **device is now discoverable**.



4. PAIRING THE HEADSET WITH OTHER BLUETOOTH DEVICES

Mobile Phone

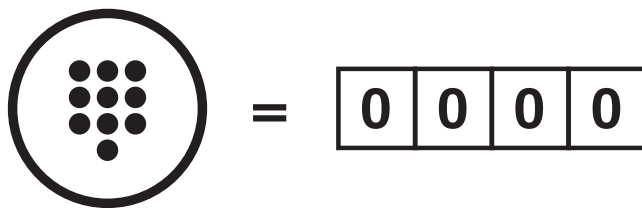
Pairing with the H-D WHIM Wireless Headset Interface Module

Additional Mobile Phones, MP3 Player

Advanced Selective Pairing: Hands-Free or A2DP Stereo

GPS Pairing

2. With your mobile phone in Bluetooth-pairing mode, select the headset in the list of devices detected.
3. If your mobile phone asks for a PIN, enter 0000.

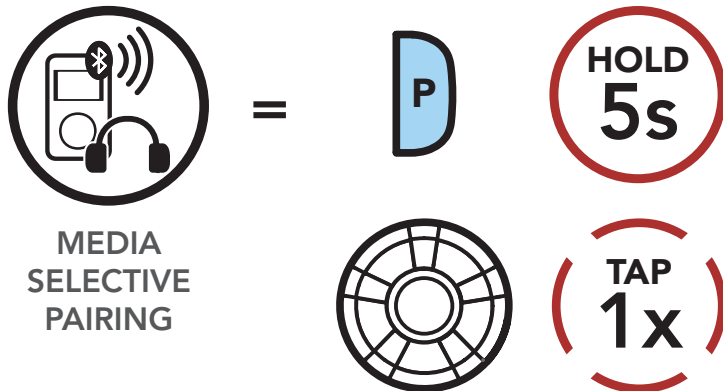


PIN NUMBER

4.4.2 Media Selective Pairing - A2DP Profile

1. Execute **Media Selective Pairing** by holding down the **Phone Button** for **5 seconds**. Tap the **Jog Dial** once within **2 seconds**.

Media Selective Pairing



MEDIA SELECTIVE PAIRING



"Media selective pairing"



LED STATUS

= Red flashing lights indicate **device is now discoverable**.



4. PAIRING THE HEADSET WITH OTHER BLUETOOTH DEVICES

Mobile Phone

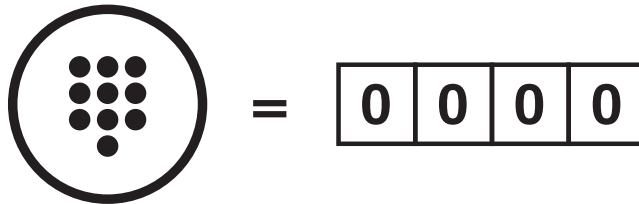
Pairing with the H-D WHIM Wireless Headset Interface Module

Additional Mobile Phones, MP3 Player

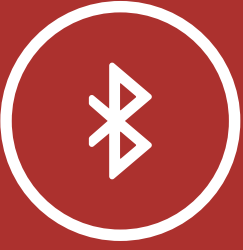
Advanced Selective Pairing: Hands-Free or A2DP Stereo

GPS Pairing

2. With your mobile phone in Bluetooth-pairing mode, select the headset in the list of devices detected.
3. If your mobile phone asks for a PIN, enter 0000.



PIN NUMBER



4. PAIRING THE HEADSET WITH OTHER BLUETOOTH DEVICES

4.5 GPS Pairing

Mobile Phone

Pairing with the H-D WHIM Wireless Headset Interface Module

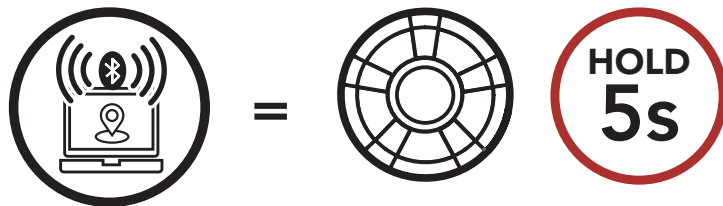
Additional Mobile Phones, MP3 Player

Advanced Selective Pairing: Hands-Free or A2DP Stereo

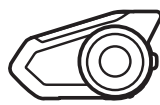
GPS Pairing

1. Execute **GPS Pairing** by holding down the **Jog Dial** for **5 seconds**. Within **2 seconds**, tap the **Phone Button** once to hear the voice prompt, **"Second mobile phone pairing"**. Again within **2 seconds**, tap the **Phone Button** to hear the voice prompt, **"GPS pairing"**.

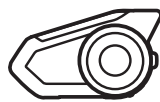
GPS Pairing



GPS PAIRING



"Second mobile phone pairing"

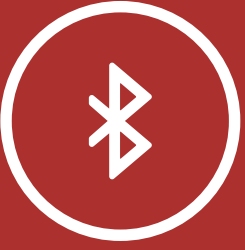


"GPS pairing"



LED STATUS

= Green flashing lights indicates device is now discoverable.



4. PAIRING THE HEADSET WITH OTHER BLUETOOTH DEVICES

Mobile Phone

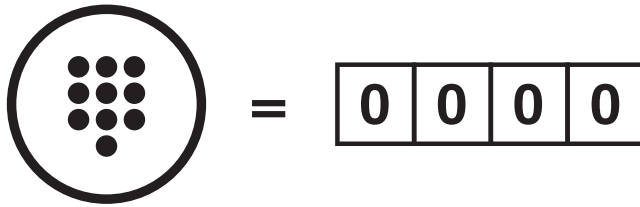
Pairing with the H-D WHIM Wireless Headset Interface Module

Additional Mobile Phones, MP3 Player

Advanced Selective Pairing: Hands-Free or A2DP Stereo

GPS Pairing

2. With your Bluetooth device on the GPS navigation screen, select the headset in the list of devices detected.
3. If your Bluetooth device asks for a PIN, enter 0000.



Note: If you pair your GPS device via GPS Pairing, its instruction will not interrupt your Mesh Intercom conversations, but overlay with them. Bluetooth intercom conversations will be interrupted by GPS instructions.



5. MOBILE PHONE USAGE

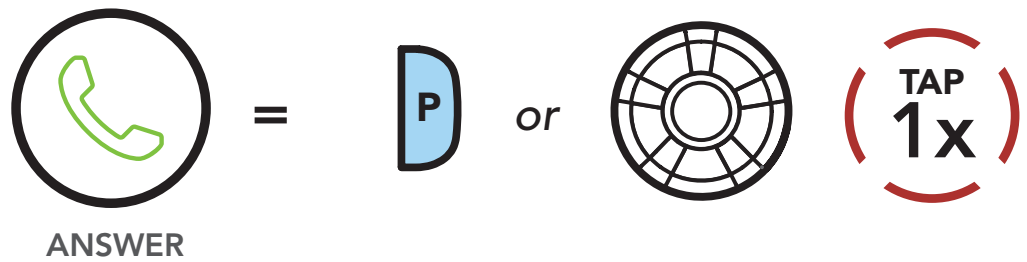
5.1 Making and Answering Calls

Making and Answering Calls

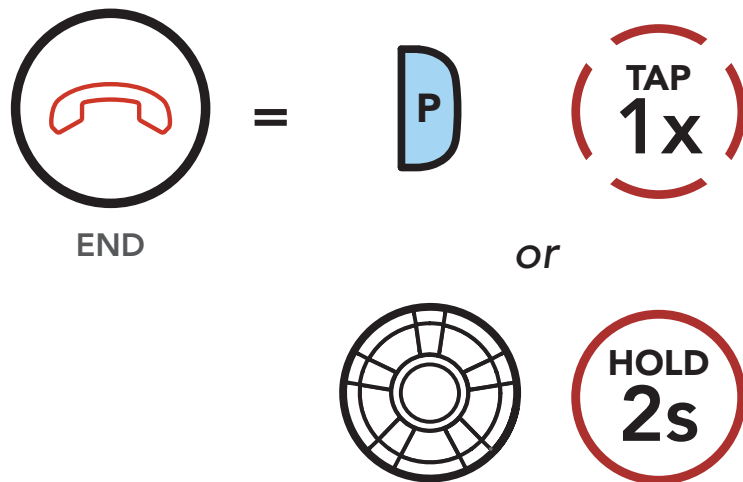
Speed Dialing

VOX Phone

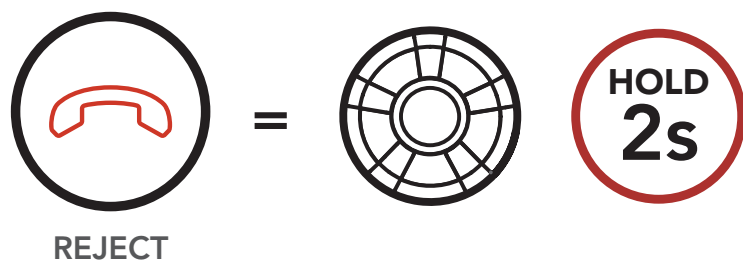
Answer a Call



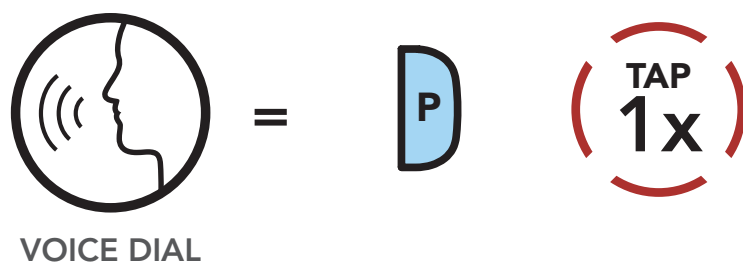
End a Call



Reject a Call



Make a Call with Voice Dialer



Note: If you have a GPS device connected, you will not hear its voice navigations during a phone call.



5. MOBILE PHONE USAGE

5.2 Speed Dialing

Making and
Answering
Calls

Speed Dialing

VOX Phone

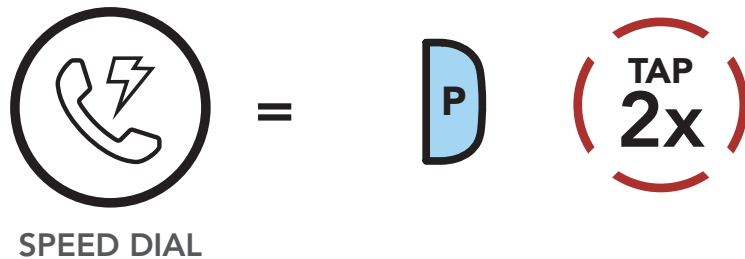
5.2.1 Assigning Speed Dial Presets

Speed Dial Presets could be assigned in the settings menu, accessible through **Boom Audio Bluetooth Device Manager** or **Sena Smartphone App**.

5.2.2 Using Speed Dial Presets

1. Tap the **Phone Button** twice to enter into the **Speed Dial** menu. You will hear the voice prompt, **"Speed dial."**

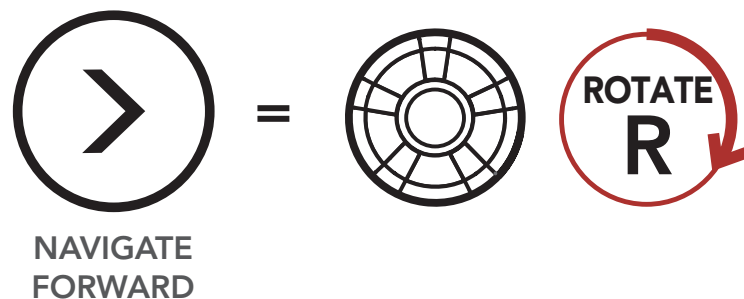
Enter Speed Dial Mode



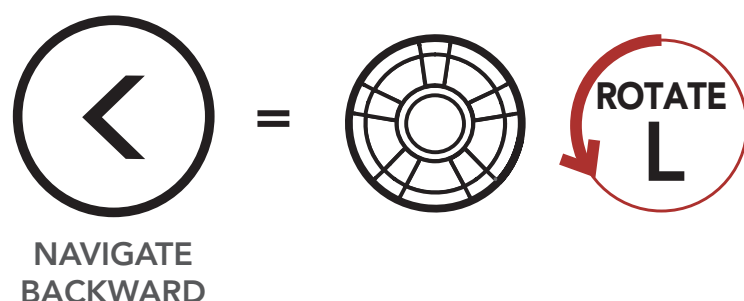
"Speed dial"

2. Rotate the **Jog Dial** clockwise or counterclockwise to navigate between the **Speed Dial Presets**.

Navigate Forward through Speed Dial Preset Numbers



Navigate Backward through Speed Dial Preset Numbers





5. MOBILE PHONE USAGE

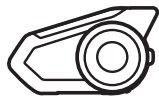
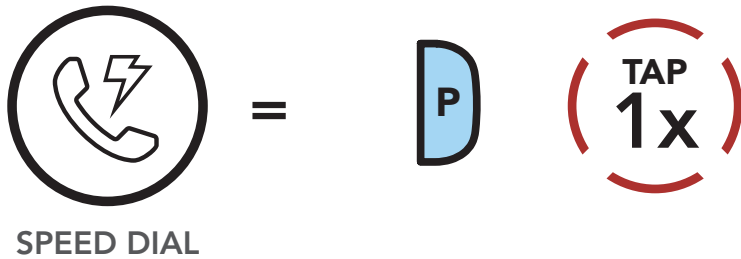
Making and
Answering
Calls

Speed Dialing

VOX Phone

3. To call one of your **Speed Dial Presets**, tap the **Phone Button** when you hear the prompt, **"Speed dial (#)."**

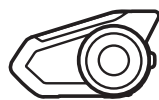
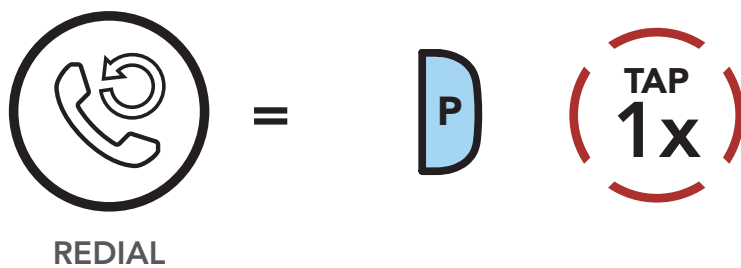
Call a Speed Dial Preset Number



"Speed dial #"

4. To redial the last number called, tap the **Phone Button** when you hear the prompt, **"Last number redial."**

Redial Last Number



"Last number redial"



5. MOBILE PHONE USAGE

5.3 VOX Phone (Default: Enable)

Making and
Answering
Calls

An **VOX Phone** setting can be found in the settings menu, accessible through **Boom Audio Bluetooth Device Manager** or **Sena Smartphone App**.

Speed Dialing

With **VOX Phone** enabled, you can answer incoming calls by simply saying a word loudly enough, unless you are connected to intercom. For example, when you hear a series of beeps for an incoming call, you can answer the phone by saying **"Hello"** or any other word loudly. If this mode is disabled, you have to tap the **Jog Dial** or the **Phone Button** to answer an incoming call.

VOX Phone



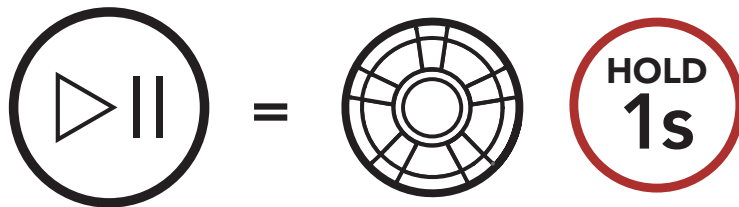
6. STEREO MUSIC

6.1 Playing Music with Bluetooth Devices

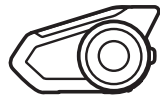
Playing
Music with
Bluetooth
Devices

- To play or pause music, press and hold the **Jog Dial** for **1 second** until you hear a double beep.

Play/Pause



PLAY/PAUSE



"[Beep, Beep]"

Playing Music
with non-
Bluetooth
Devices

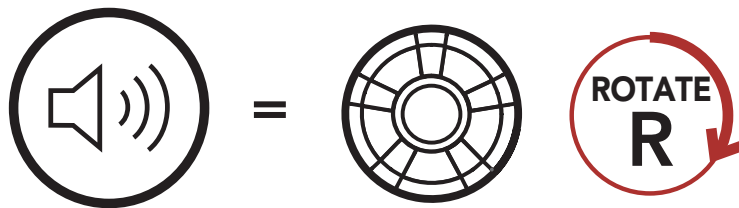
Music Sharing

Audio Boost

Smart Volume
Control

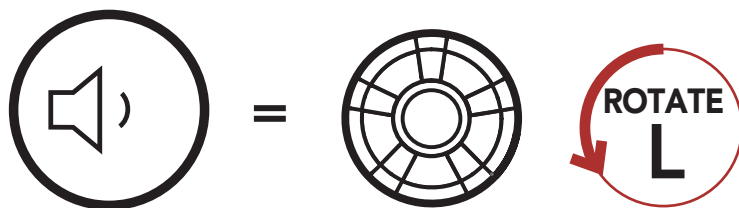
- To adjust the volume, rotate the **Jog Dial** clockwise or counterclockwise.

Volume Up



VOLUME
UP

Volume Down



VOLUME
DOWN



6. STEREO MUSIC

3. To track forward or back, rotate while pressing the **Jog Dial** clockwise or counterclockwise.

Playing Music with Bluetooth Devices

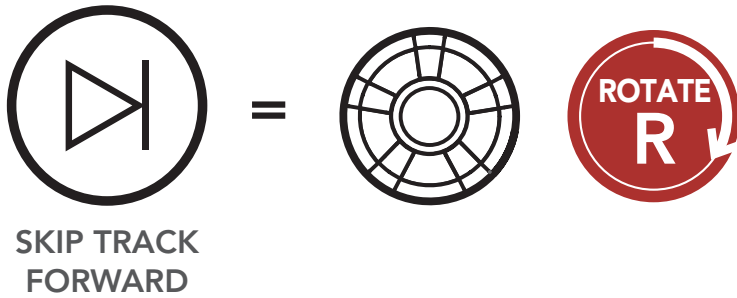
Playing Music with non-Bluetooth Devices

Music Sharing

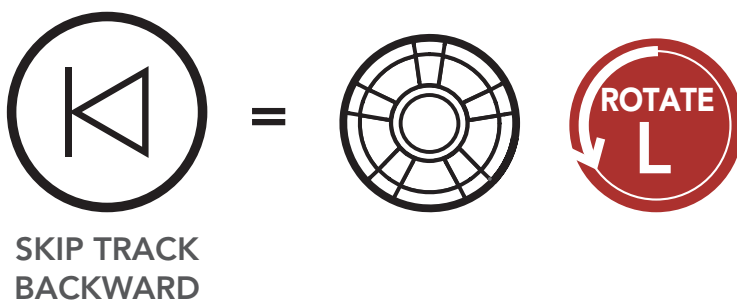
Audio Boost

Smart Volume Control

Track Forward

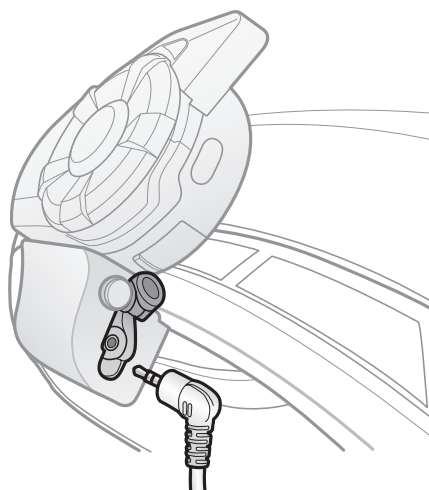


Track Backward



6.2 Playing Music with non-Bluetooth Devices

You can play music that is stored on non-Bluetooth devices such as MP3 players. To connect your device to the headset, plug the enclosed 2.5 to 3.5 mm audio cable into the AUX ports, both on the headset and on your device.





6. STEREO MUSIC

To adjust the volume, rotate the **Jog Dial** clockwise or counterclockwise. You can also adjust the volume directly on the connected device.

Playing Music with Bluetooth Devices

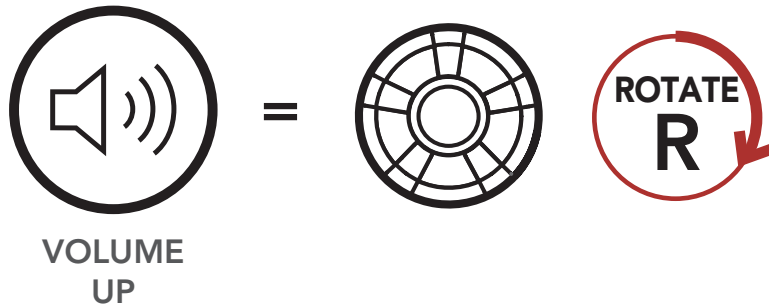
Playing Music with non-Bluetooth Devices

Music Sharing

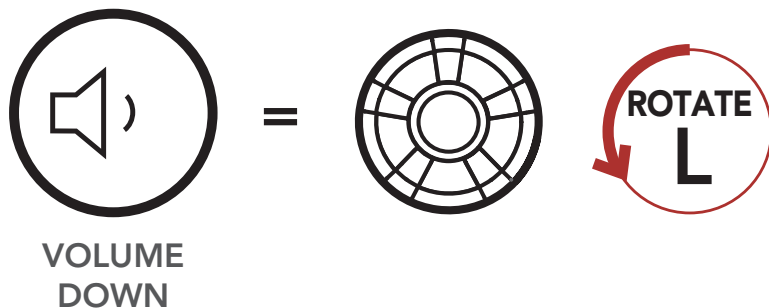
Audio Boost

Smart Volume Control

Volume Up



Volume Down



6.3 Music Sharing

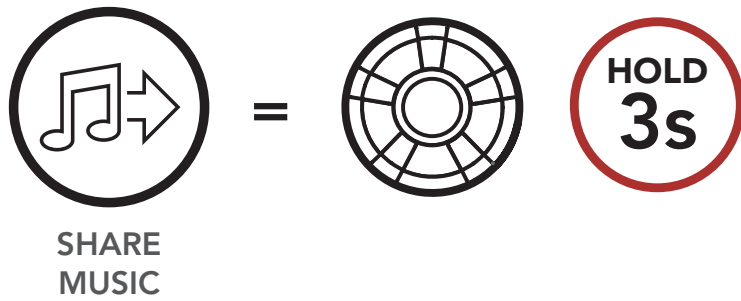
You can start sharing music with one intercom friend using Bluetooth stereo music during a two-way intercom conversation and one participant of a Mesh. Both you and your intercom friend can remotely control music playback such as track forward and track back. If you start sharing music while Bluetooth intercom and Mesh Intercom are running at the same time, then music shared during Bluetooth intercom will take priority over music shared during Mesh Intercom. The Creator will send a request message to a headset connected during Mesh Intercom and will share music with the first participant that accepts the request.



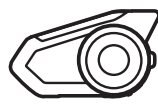
6. STEREO MUSIC

Bluetooth Intercom Music Sharing

Playing Music with Bluetooth Devices



Playing Music with non-Bluetooth Devices



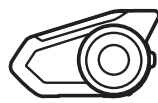
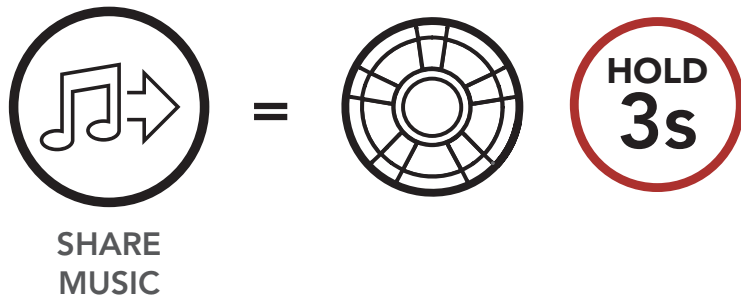
"Music sharing on"

Music Sharing

Audio Boost

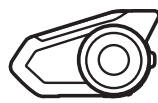
Mesh Intercom Music Sharing [Creator]

Smart Volume Control

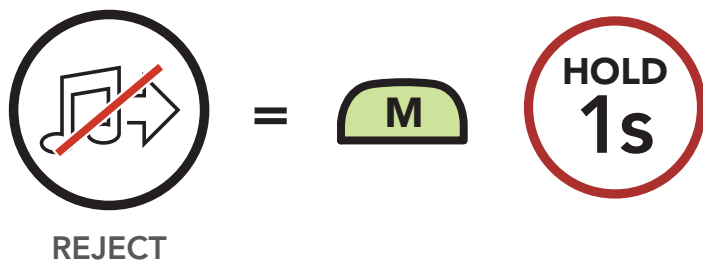
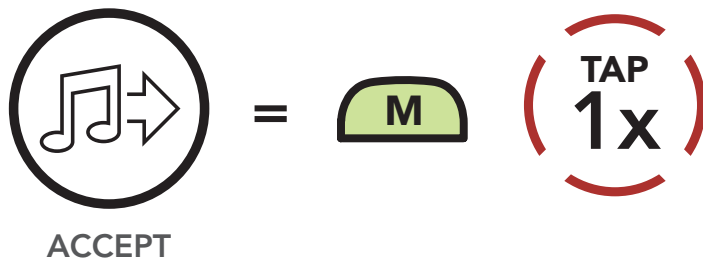


"Music sharing on"

[Participant]



"Would you like to accept music sharing?"





6. STEREO MUSIC

6.4 Audio Boost (Default: Disable)

Playing
Music with
Bluetooth
Devices

An **Audio Boost** setting can be found in the settings menu, accessible through **Boom Audio Bluetooth Device Manager** or **Sena Smartphone App**.

Playing Music
with non-
Bluetooth
Devices

Enabling **Audio Boost** increases the maximum volume limit. Disabling **Audio Boost** reduces the maximum volume limit while delivering more balanced sound.

Music Sharing

6.5 Smart Volume Control (Default: Disable)

Audio Boost

A **Smart Volume Control** setting can be found in the settings menu, accessible through **Boom Audio Bluetooth Device Manager** or **Sena Smartphone App**.

Smart Volume
Control

Enabling **Smart Volume Control** automatically changes the level of the speaker volume based on the level of the environment noise. You can enable it by setting the sensitivity to low, medium or high.

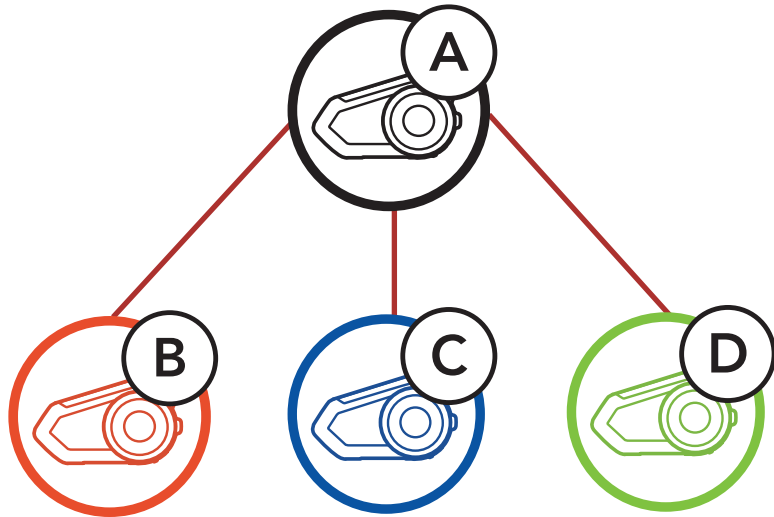


7. BLUETOOTH INTERCOM SETUP

7.1 Intercom Pairing

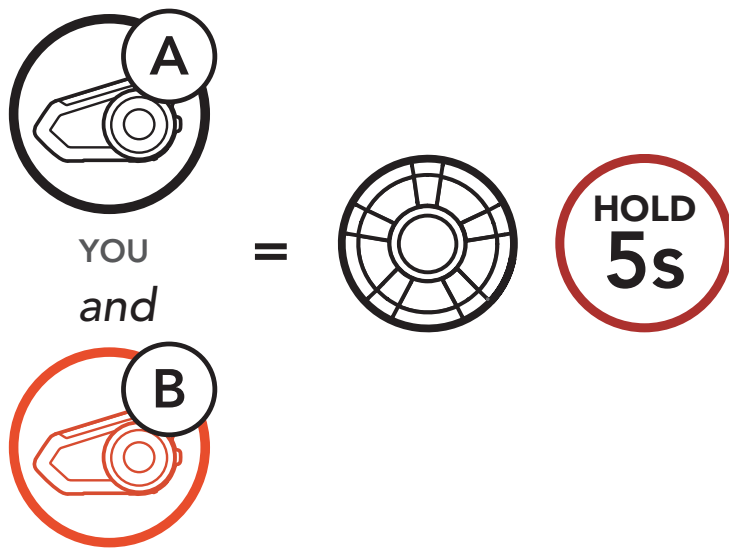
Up to three people can communicate via intercom with the headset simply by pairing their headsets.

Pairing with Intercom Friends



1. Press and hold the **Jog Dials** of two headsets for **5 seconds** until you hear the voice prompt, "Intercom pairing".

Pairing Headset A with Headset B



"Intercom pairing"



=

Red flashing lights indicate device is now discoverable.

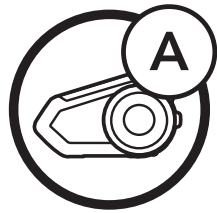
LED STATUS

- Intercom Pairing
- Two-Way Intercom
- Multi-Way Intercom
- Three-Way Conference Phone Call with Intercom Users
- Group Intercom
- Universal Intercom
- VOX Intercom
- Intercom VOX Sensitivity
- HD Intercom
- Advanced Noise Control™



7. BLUETOOTH INTERCOM SETUP

2. Tap the **Jog Dial** on either headset and wait until the LEDs of both turn blue.

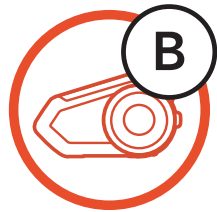


YOU

=



or



B



LED STATUS

=

Flashing blue LED confirms intercoms are paired.

Intercom Pairing

Two-Way Intercom

Multi-Way Intercom

Three-Way Conference Phone Call with Intercom Users

Group Intercom

Universal Intercom

VOX Intercom

Intercom VOX Sensitivity

HD Intercom

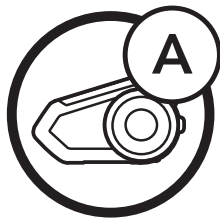
Advanced Noise Control™



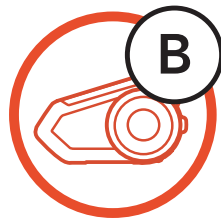
7. BLUETOOTH INTERCOM SETUP

3. Repeat steps 1 and 2 to pair with **Intercom Friends C & D.**

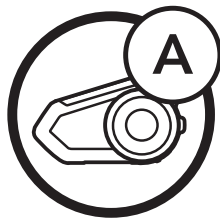
Last-Come, First-Served



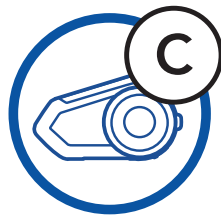
YOU



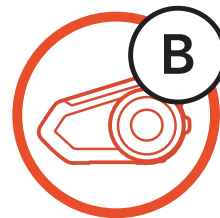
Intercom Friend 1



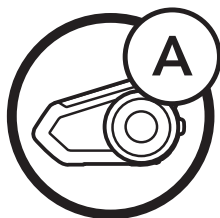
YOU



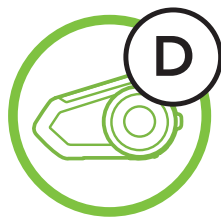
Intercom Friend 1



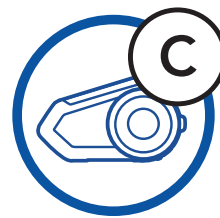
Intercom Friend 2



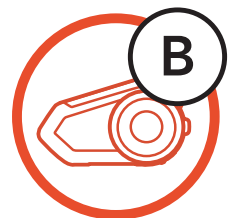
YOU



Intercom Friend 1



Intercom Friend 2



Intercom Friend 3

Intercom Pairing

Two-Way Intercom

Multi-Way Intercom

Three-Way Conference Phone Call with Intercom Users

Group Intercom

Universal Intercom

VOX Intercom

Intercom VOX Sensitivity

HD Intercom

Advanced Noise Control™



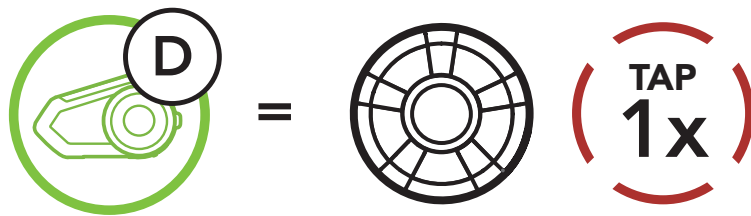
7. BLUETOOTH INTERCOM SETUP

7.2 Two-Way Intercom

You can start or end an intercom conversation with an Intercom Friend by tapping the **Jog Dial**.

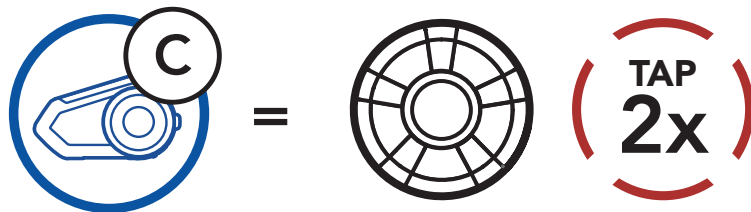
1. Tap once for Intercom **Friend 1**.

Start/End with Intercom Friend 1



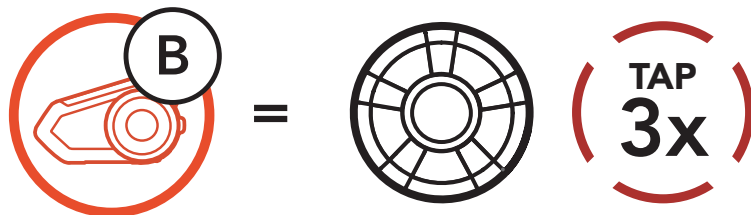
2. Tap twice for Intercom **Friend 2**.

Start/End with Intercom Friend 2



3. Tap three times for Intercom **Friend 3**.

Start/End with Intercom Friend 3



- Intercom Pairing
- Two-Way Intercom
- Multi-Way Intercom
- Three-Way Conference Phone Call with Intercom Users
- Group Intercom
- Universal Intercom
- VOX Intercom
- Intercom VOX Sensitivity
- HD Intercom
- Advanced Noise Control™



7. BLUETOOTH INTERCOM SETUP

7.3 Multi-Way Intercom

Intercom Pairing

Two-Way Intercom

Multi-Way Intercom

Three-Way Conference Phone Call with Intercom Users

Group Intercom

Universal Intercom

VOX Intercom

Intercom VOX Sensitivity

HD Intercom

Advanced Noise Control™

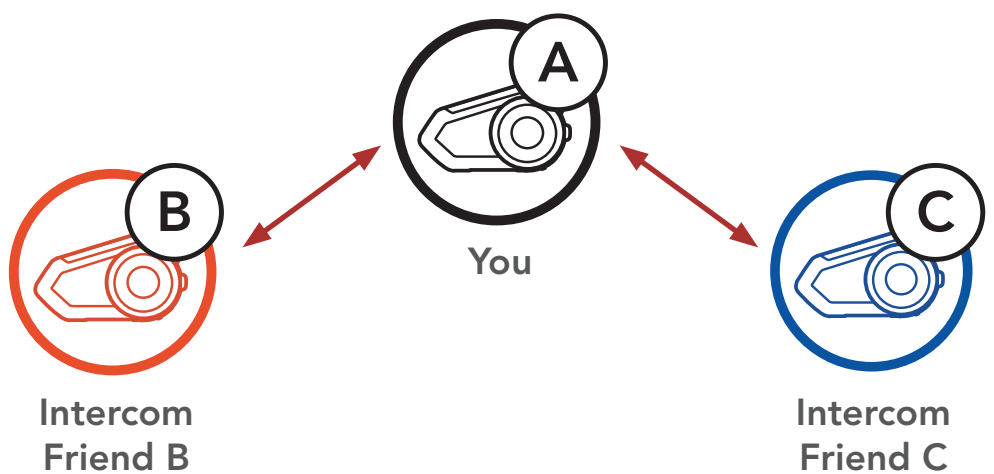
Multi-Way Intercom enables conference-call-style conversations with up to three **Intercom Friends** at the same time. While **Multi-Way Intercom** is in progress, mobile phone connection is temporarily disconnected. However, as soon as **Multi-Way Intercom** terminates, the mobile phone connection will be reestablished.

7.3.1 Starting a Three-Way Intercom Conference

You (A) can have a **Three-Way Intercom Conference** with two other **Intercom Friends (B & C)** by establishing two intercom connections simultaneously.

1. Pair your headset (A) with those of two other **Intercom Friends (B & C)**. Please refer to **Section 7.1: "Intercom Pairing"** for pairing instructions.

Pair with Intercom Friends B & C





7. BLUETOOTH INTERCOM SETUP

Intercom
Pairing

Two-Way
Intercom

Multi-Way
Intercom

Three-Way
Conference
Phone Call
with Intercom
Users

Group
Intercom

Universal
Intercom

VOX Intercom

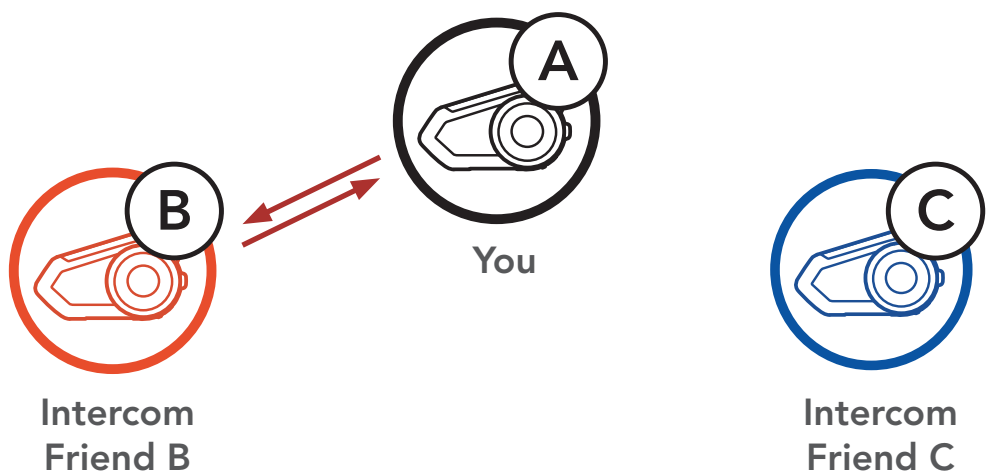
Intercom VOX
Sensitivity

HD Intercom

Advanced
Noise
Control™

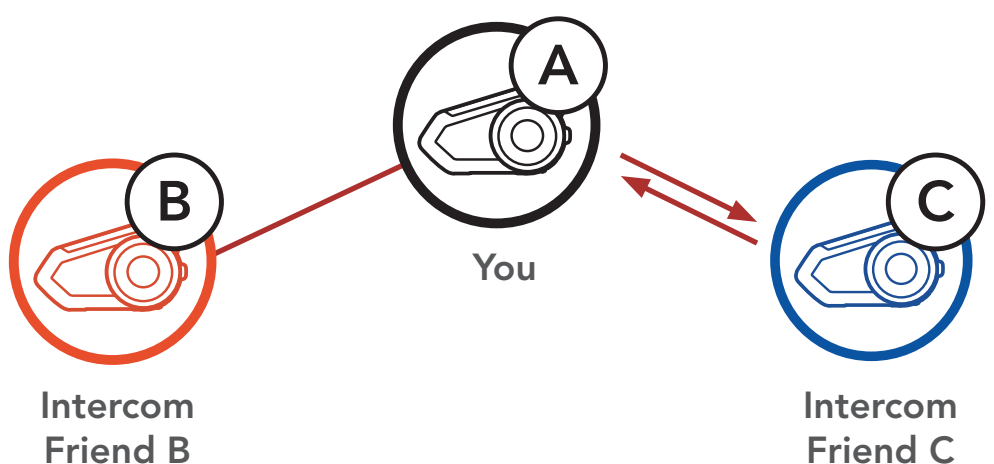
2. Start an intercom conversation with one of the two friends in your intercom group. For example, **you (A)** may start an intercom conversation with the **Intercom Friend (B)**. Or, **Intercom Friend (B)** may start an intercom call with **you (A)**.

Starting an Intercom Conversation with Intercom Friend B



3. Then, **you (A)** can call the second **Intercom Friend (C)**, or the second **Intercom Friend (C)** may join the intercom by making an intercom call to **you (A)**.

Starting an Intercom Conversation with Intercom Friend C

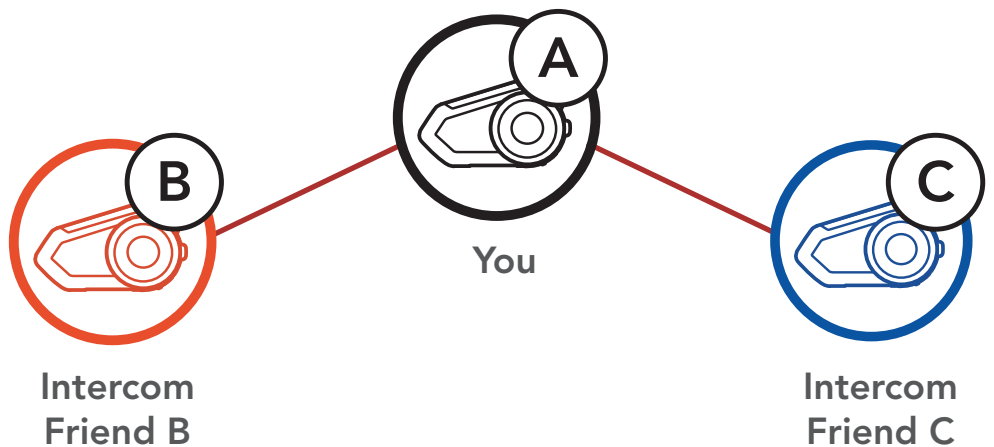




7. BLUETOOTH INTERCOM SETUP

4. Now **you (A)** and two **Intercom Friends (B & C)** are having a **Three-Way Intercom Conference**.

Three-Way Intercom

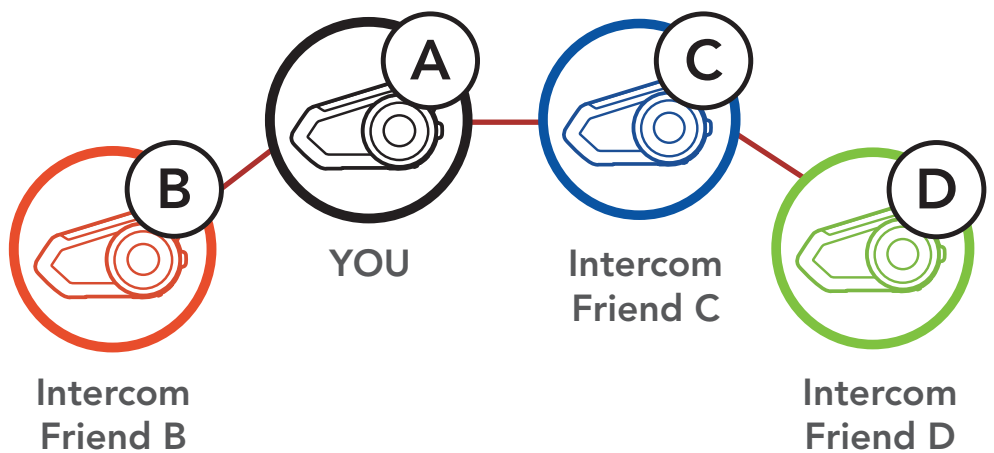


- Intercom Pairing
- Two-Way Intercom
- Multi-Way Intercom
- Three-Way Conference Phone Call with Intercom Users
- Group Intercom
- Universal Intercom
- VOX Intercom
- Intercom VOX Sensitivity
- HD Intercom
- Advanced Noise Control™

7.3.2 Starting a Four-Way Intercom Conference

With three **Intercom Friends** connected, a new participant (**D**) can make it a **Four-Way Intercom Conference** by making an intercom call to either (**B**) or (**C**).

Starting a Four-Way Intercom





7. BLUETOOTH INTERCOM SETUP

7.3.3 Ending Multi-Way Intercom

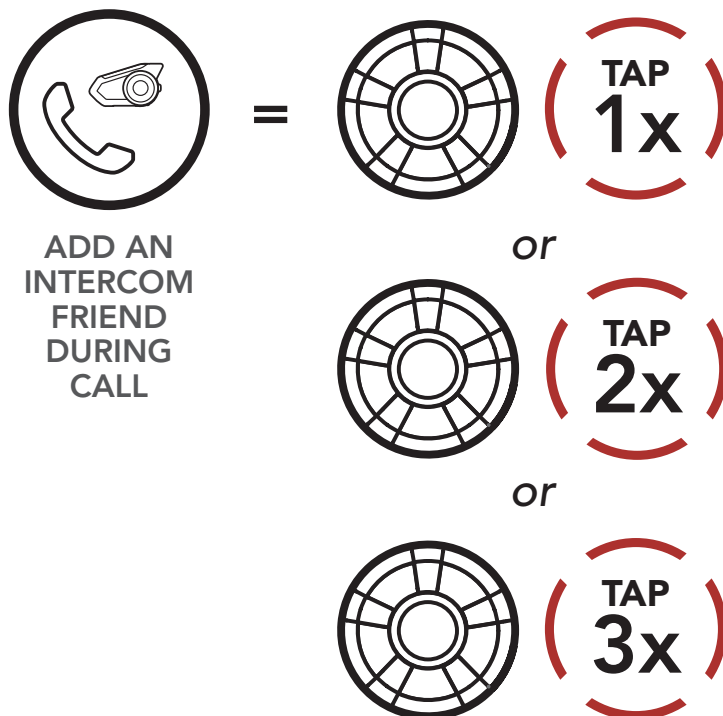
1. Press the **Jog Dial** for **1 second** until you hear a beep to terminate all intercom connections.
2. Tap the **Jog Dial** to disconnect from your first **Intercom Friend**. Double tap the **Jog Dial** to disconnect from your second **Intercom Friend**.

7.4 Three-Way Conference Phone Call with Intercom Users

You can have a **Three-Way Conference Phone Call** by adding an **Intercom Friend** to the mobile phone conversation.

1. During a mobile phone call, tap the **Jog Dial** **once, twice or, three times** to invite one of your **Intercom Friends** to the conversation.

Invite an Intercom Friend into Phone Conference



Intercom Pairing

Two-Way Intercom

Multi-Way Intercom

Three-Way Conference Phone Call with Intercom Users

Group Intercom

Universal Intercom

VOX Intercom

Intercom VOX Sensitivity

HD Intercom

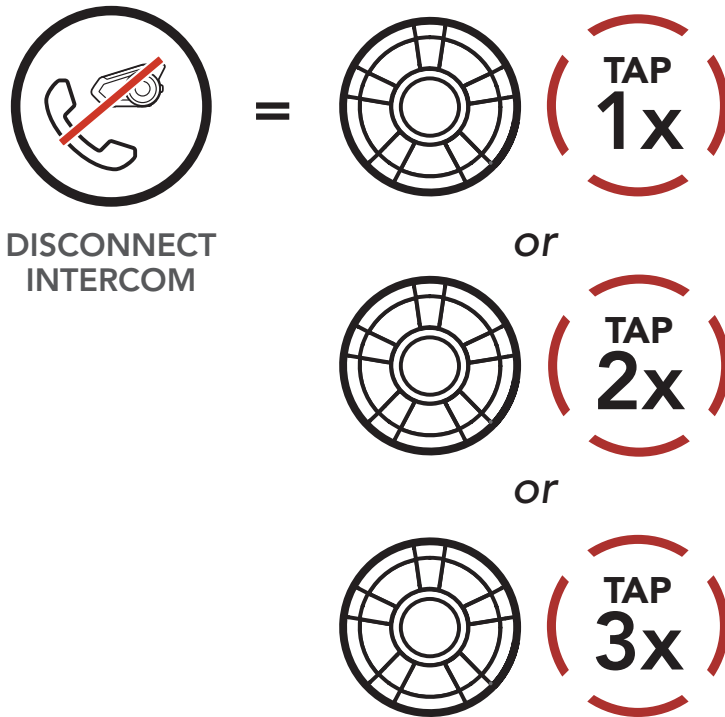
Advanced Noise Control™



7. BLUETOOTH INTERCOM SETUP

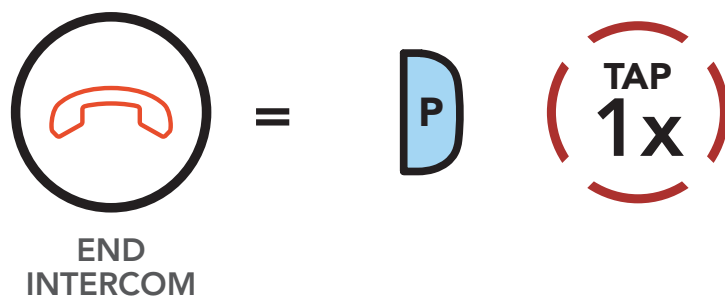
2. To disconnect the intercom during a conference phone call, tap the **Jog Dial once, twice or three times.**

Disconnect Intercom Friend from Conference



3. To disconnect the mobile phone call during a conference phone call, tap the **Phone Button.**

End Phone Call from Conference



Note: When you have an incoming intercom call during a mobile phone call, you will hear a voice prompt, "Intercom requested."

- Intercom Pairing
- Two-Way Intercom
- Multi-Way Intercom
- Three-Way Conference Phone Call with Intercom Users
- Group Intercom
- Universal Intercom
- VOX Intercom
- Intercom VOX Sensitivity
- HD Intercom
- Advanced Noise Control™



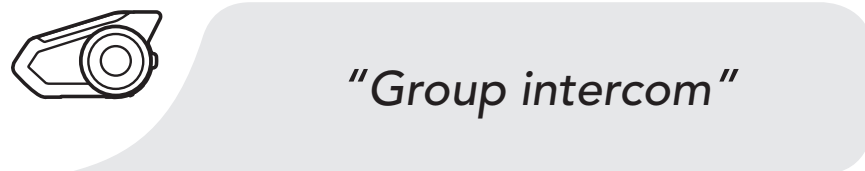
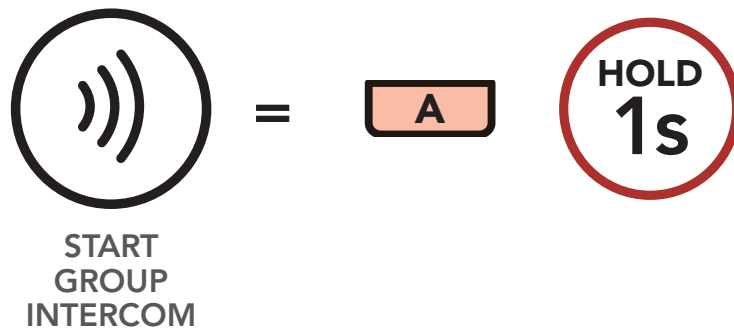
7. BLUETOOTH INTERCOM SETUP

7.5 Group Intercom

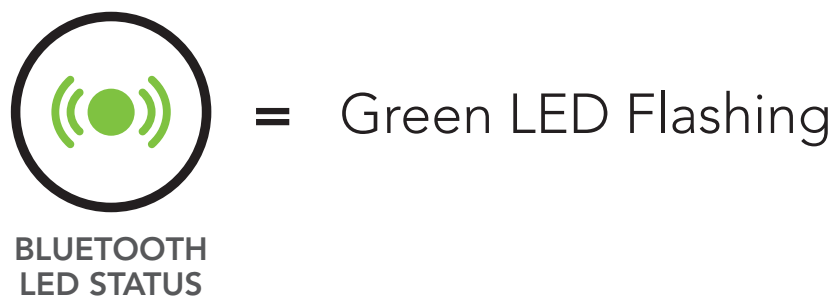
Group Intercom allows you to instantly create a **Multi-Way Conference Intercom** with three of the most recently paired headsets.

1. Go through intercom pairing with up to three headsets you want to have **Group Intercom** with.
2. Press the **Ambient Mode Button** for **1 second** to begin **Group Intercom**. The LED will flash green and you will hear a voice prompt, "**Group intercom**".

Start Group Intercom



3. When all of the headsets are connected together, everyone will hear the voice prompt, "**Group intercom connected.**"



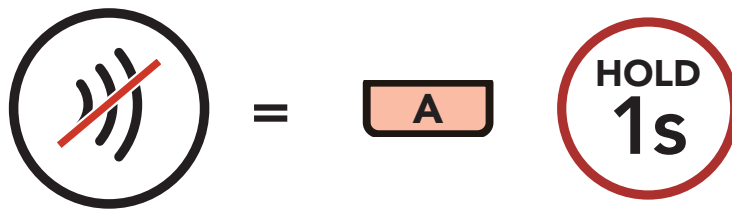
- Intercom Pairing
- Two-Way Intercom
- Multi-Way Intercom
- Three-Way Conference Phone Call with Intercom Users
- Group Intercom
- Universal Intercom
- VOX Intercom
- Intercom VOX Sensitivity
- HD Intercom
- Advanced Noise Control™



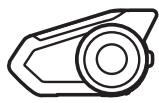
7. BLUETOOTH INTERCOM SETUP

- To terminate **Group Intercom**, press the **Ambient Mode Button** for **1 second** during **Group Intercom**. You will hear a voice prompt, "**Group intercom terminated**".

End Group Intercom



END GROUP INTERCOM



"Group intercom terminated"

Intercom Pairing

Two-Way Intercom

Multi-Way Intercom

Three-Way Conference Phone Call with Intercom Users

Group Intercom

Universal Intercom

VOX Intercom

Intercom VOX Sensitivity

HD Intercom

Advanced Noise Control™

7.6 Universal Intercom

Universal Intercom allows you to have intercom conversations with users of non-Boom! Audio Bluetooth headsets. You can pair your headset with only one non-Boom! Audio headset at a time. The intercom distance depends on the performance of the Bluetooth headset to which it's connected. When a non-Boom! Audio Bluetooth headset is paired with the Boom! Audio headset, if another Bluetooth device is paired via **Second Mobile Phone Pairing**, it will be disconnected.

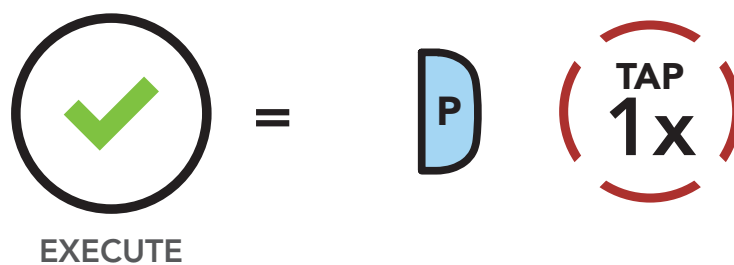
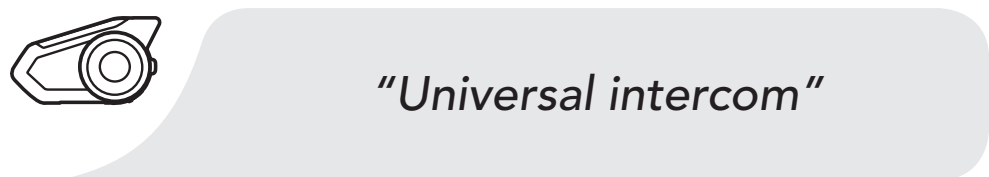
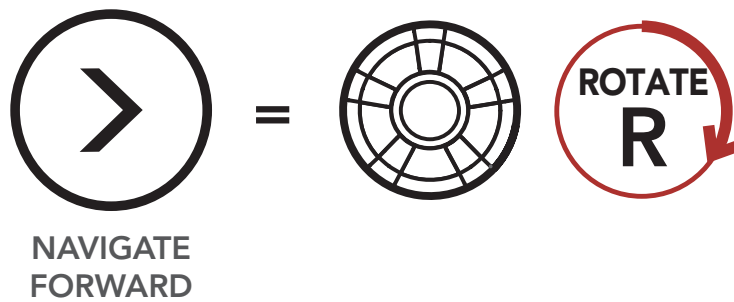
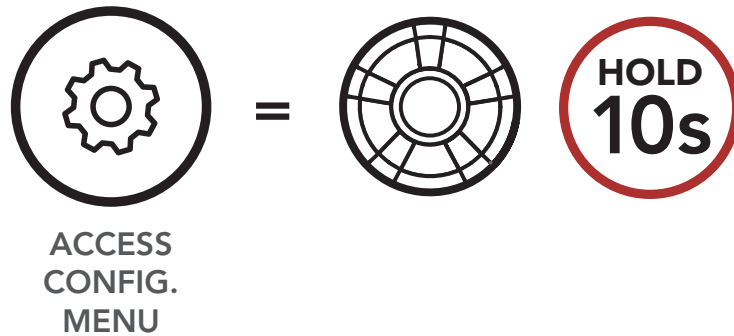
- Execute **Universal Intercom** in the **Headset Configuration Menu**.



7. BLUETOOTH INTERCOM SETUP

Access Universal Intercom in the Configuration Menu

- Intercom Pairing
- Two-Way Intercom
- Multi-Way Intercom
- Three-Way Conference Phone Call with Intercom Users
- Group Intercom
- Universal Intercom
- VOX Intercom
- Intercom VOX Sensitivity
- HD Intercom
- Advanced Noise Control™



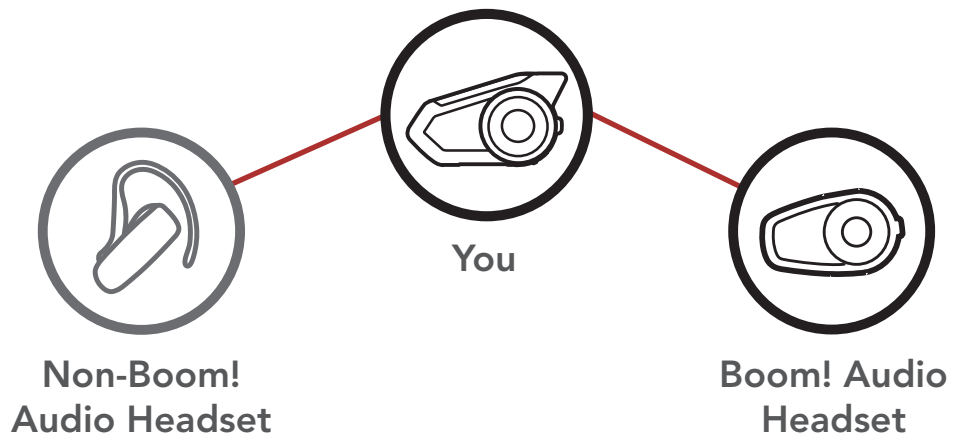
2. Put the non-Boom! Audio Bluetooth headset in Pairing Mode. The headset will automatically pair with a non-Boom! Audio Bluetooth headset.



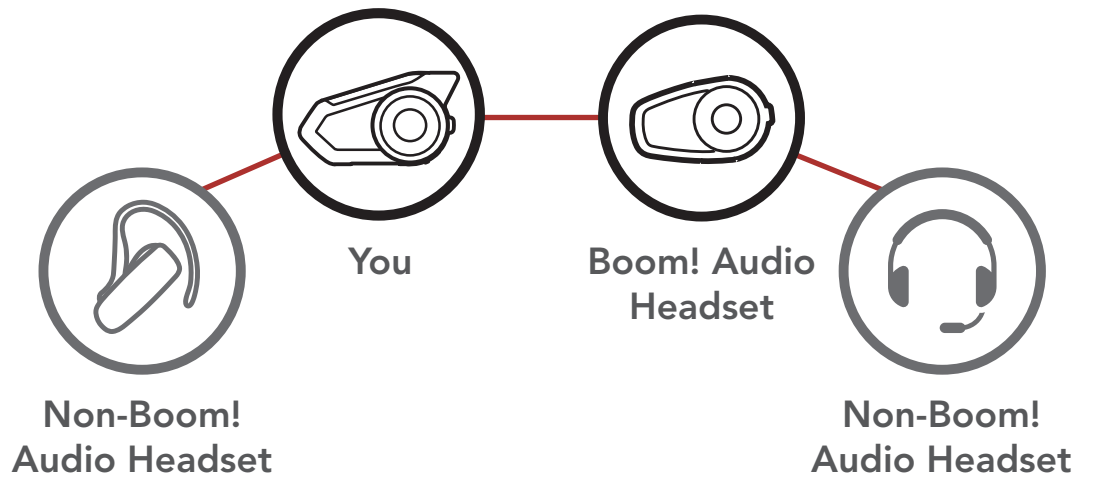
7. BLUETOOTH INTERCOM SETUP

3. You can have **Two-Way Intercom** or **Multi-Way Intercom** communication with up to three **Intercom Friends** using non-Boom! Audio headsets by following the procedures described below.

Example of a Three-Way Universal Intercom



Example of a Four-Way Universal Intercom



Intercom Pairing

Two-Way Intercom

Multi-Way Intercom

Three-Way Conference Phone Call with Intercom Users

Group Intercom

Universal Intercom

VOX Intercom

Intercom VOX Sensitivity

HD Intercom

Advanced Noise Control™



7. BLUETOOTH INTERCOM SETUP

7.7 VOX Intercom (Default: Disable)

The **VOX Intercom** setting can be found in the settings menu, accessible through **Boom Audio Bluetooth Device Manager** or **Sena Smartphone App**.

If **VOX Intercom** is enabled, you can initiate an intercom conversation with the last connected intercom friend by voice. When you want to start intercom, say a word such as **"Hello"** loudly or blow air into the microphone. If you start an intercom conversation by voice, the intercom terminates automatically when you and your intercom friend remain silent for 20 seconds. However, if you manually start an intercom conversation by tapping the **Jog Dial**, you have to terminate the intercom conversation manually.

However, if you start the intercom by voice and end it manually by tapping the **Jog Dial**, you will not be able to start intercom by voice temporarily. In this case, you have to tap the **Jog Dial** to restart the intercom. This is to prevent repeated unintentional intercom connections by strong wind noise. After rebooting the headset, you can start the intercom by voice again.

Intercom
Pairing

Two-Way
Intercom

Multi-Way
Intercom

Three-Way
Conference
Phone Call
with Intercom
Users

Group
Intercom

Universal
Intercom

VOX Intercom

Intercom VOX
Sensitivity

HD Intercom

Advanced
Noise
Control™



7. BLUETOOTH INTERCOM SETUP

7.8 Intercom VOX Sensitivity (Default: 3)

The **Intercom VOX Sensitivity** setting can be found in the settings menu, accessible through **Boom Audio Bluetooth Device Manager** or **Sena Smartphone App**.

The sensitivity can be adjusted depending on your riding environment. Level 5 is the highest sensitivity setting and 1 is the lowest.

7.9 HD Intercom (Default: Enable)

The **HD Intercom** setting can be found in the settings menu, accessible through **Boom Audio Bluetooth Device Manager** or **Sena Smartphone App**.

HD Intercom enhances the two-way intercom audio from normal quality to HD quality. **HD Intercom** will become temporarily disabled when you enter into a multi-way intercom. If this feature is disabled, the two-way intercom audio will change to normal quality.

Note:

- The intercom distance of **HD Intercom** is relatively shorter than that of normal intercom.
- **HD intercom** is active only when **Bluetooth Intercom Audio Multitasking** is disabled.

Intercom
Pairing

Two-Way
Intercom

Multi-Way
Intercom

Three-Way
Conference
Phone Call
with Intercom
Users

Group
Intercom

Universal
Intercom

VOX Intercom

Intercom VOX
Sensitivity

HD Intercom

Advanced
Noise
Control™



7. BLUETOOTH INTERCOM SETUP

7.10 Advanced Noise Control™ (Default: Enable)

The **Advanced Noise Control** setting can be found in the settings menu, accessible through **Boom Audio Bluetooth Device Manager** or **Sena Smartphone App**.

If **Advanced Noise Control** is enabled, background noise is reduced during intercom conversations.

If **Advanced Noise Control** is disabled, the background noise is mixed with your voice while using the intercom.

Intercom
Pairing

Two-Way
Intercom

Multi-Way
Intercom

Three-Way
Conference
Phone Call
with Intercom
Users

Group
Intercom

Universal
Intercom

VOX Intercom

Intercom VOX
Sensitivity

HD Intercom

Advanced
Noise
Control™



8. MESH INTERCOM

8.1 What is Mesh Intercom?

What is Mesh Intercom?

Mesh Intercom Mode

Using the Mesh

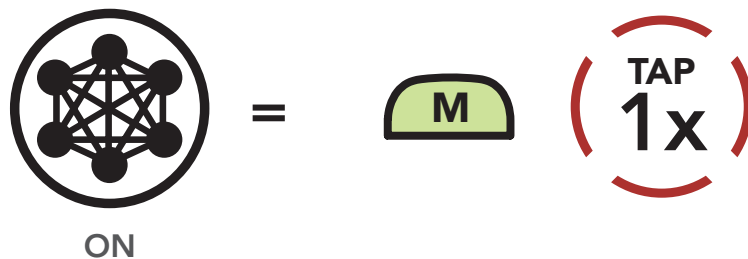
Mesh Intercom Conference with Bluetooth Intercom Participant

Mesh Intercom is an adaptive and autonomous intercom technology developed by Harley-Davidson which features self-organizing, self-healing, self-optimizing, and multi-hopping group communication. **Mesh Intercom** allows riders to connect and communicate with nearby users without the need to pair each headset together.

Starting Mesh Intercom

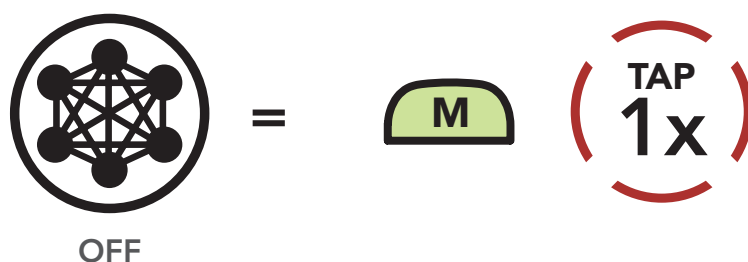
When **Mesh Intercom** is enabled, the headset will automatically connect to nearby Boom! Audio 30K users and allow them to talk to each other by pressing the **Mesh Intercom Button**.

Mesh Intercom On



"Mesh intercom on"

Mesh Intercom Off



"Mesh intercom off"



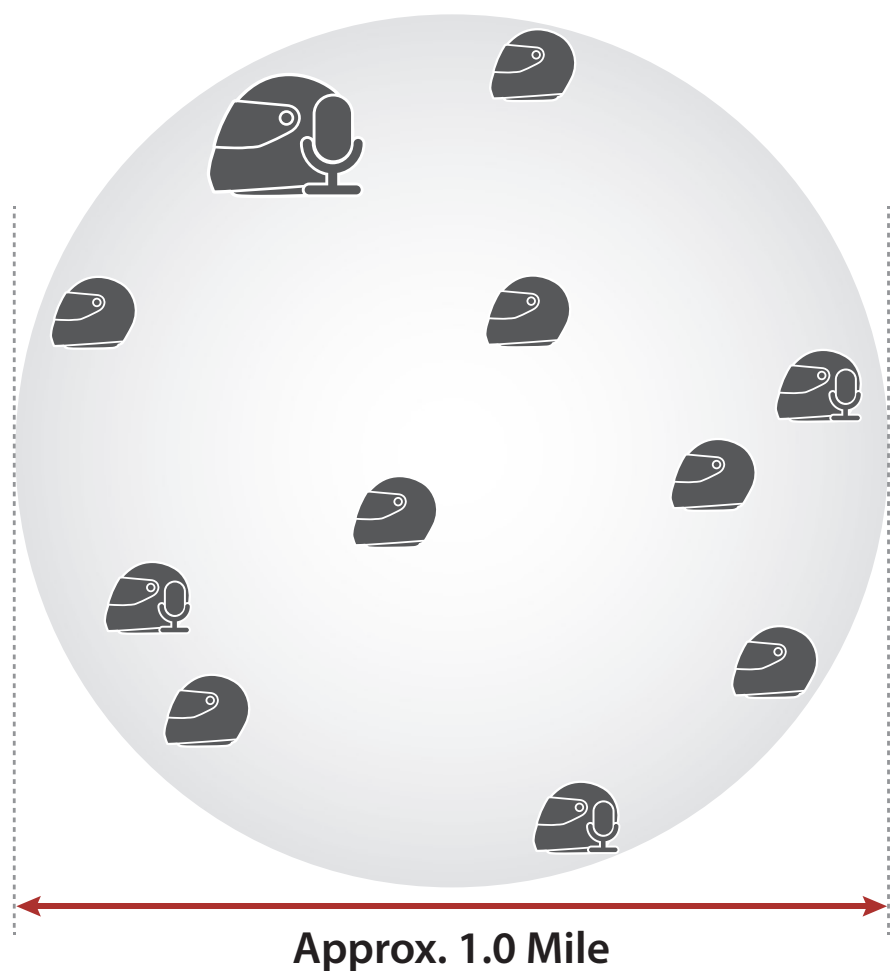
8. MESH INTERCOM

8.2 Mesh Intercom Mode (Default: Public Mode)

8.2.1 Public Mode

When **Mesh Intercom** is enabled, the headset will be in **Public Mode** initially. It can connect with a virtually unlimited number of nearby Boom! Audio 30K headsets within a 1.6 km (1.0 mile) range. Within this group, 6 users can talk at the same time for an optimized, open group intercom conversation. Users can freely connect with each other when in **Public Mode**. The audio quality of the intercom conversation will be the best when communicating using **Public Mode**. The headset will not save the connection information from any of the headsets that it is connected to for future open group intercom conversations when in **Public Mode**.

Mesh Intercom in Public Mode



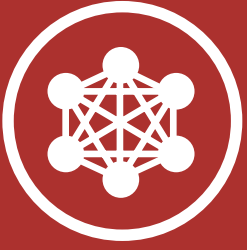
- Limitless participants within range
- 6 people talk at the same time

What is Mesh Intercom?

Mesh Intercom Mode

Using the Mesh

Mesh Intercom Conference with Bluetooth Intercom Participant



8. MESH INTERCOM

8.2.2 Private Mode

What is Mesh Intercom?

Mesh Intercom Mode

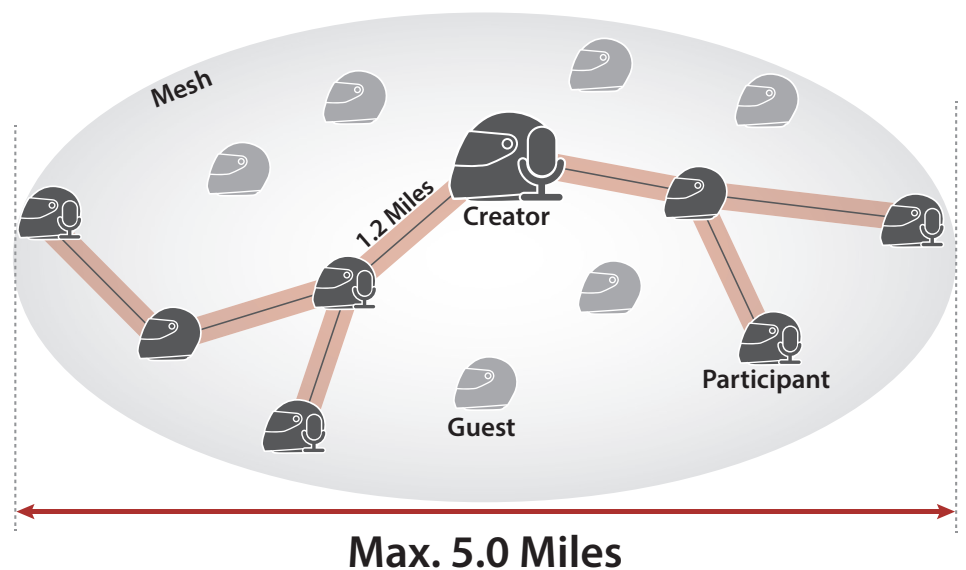
Using the Mesh

Mesh Intercom Conference with Bluetooth Intercom Participant

Mesh

A Mesh is a closed network of headsets where participants can leave, join or rejoin a group intercom conversation without affecting the connection between each of the headsets. For a closed intercom conversation using **Mesh Intercom**, a Mesh needs to be created by a user. When a user creates a Mesh, the headset automatically switches from **Public Mode** to **Private Mode**.

Mesh Intercom in Private Mode



- Max. participants : 15 participants + 1 creator
- 6 people talk at the same time
- Limitless guests only listen within "Mesh" range



8. MESH INTERCOM

What is Mesh Intercom?

Mesh Intercom Mode

Using the Mesh

Mesh Intercom Conference with Bluetooth Intercom Participant

Private Mode

When the headset is in **Private Mode**, it can connect with up to 15 other Boom! Audio 30K headsets. The range between each headset in Private Mode can be up to 2.0 km (1.2 miles). The Mesh can extend up to 8.0 km (5.0 miles) head-to-tail during a closed intercom conversation. Within this group, 6 users can talk at the same time for an optimized closed group conversation. The audio quality when communicating in a Mesh automatically adjusts according to the number of participants. When connected together in a Mesh, the headset will automatically save the connection information from all of the other headsets that it has connected to for future **Mesh Intercom** group communication.

8.2.3 Guest Mode (Default: Disable)

A **Guest Mode** setting can be found in the settings menu, accessible through **Boom Audio Bluetooth Device Manager** or **Sena Smartphone App**.

Guest Mode allows a guest to listen to a closed Mesh conversation. The creator of the Mesh needs to enable **Guest Mode** before creating the Mesh to allow guests. **Guest Mode** can be enabled when the guest is in **Public Mode** and the **Mesh Network** connection information has been removed. The guest needs to be within range of the Mesh to listen to the closed Mesh conversation.

Note: When the creator enables **Guest Mode**, a virtually unlimited number of guests can connect to a Mesh.



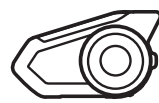
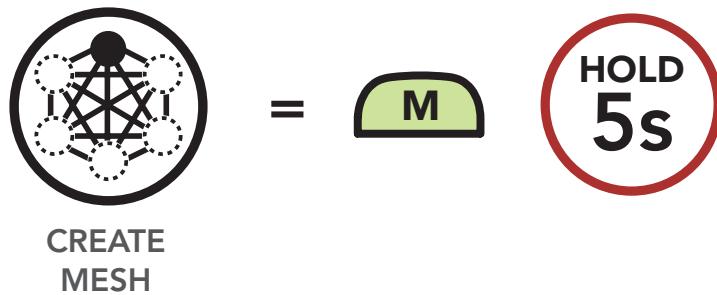
8. MESH INTERCOM

8.3 Using the Mesh

8.3.1 Creating the Mesh

A user can create a Mesh so that they can invite nearby Boom! Audio 30K headsets to join in a closed intercom conversation.

Create Mesh [Creator]



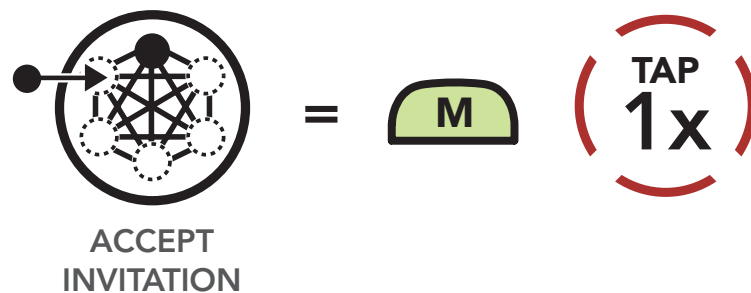
"Creating mesh"

Users within range and in **Public Mode** can accept the invitation sent by the creator of the Mesh to join a closed intercom conversation after hearing the voice prompt **"Would you like to join a mesh?"**

Accept Invitation During Mesh Creation [Participant]



"Would like to join a mesh?"



"Joined the mesh"



8. MESH INTERCOM

What is Mesh Intercom?

Mesh Intercom Mode

Using the Mesh

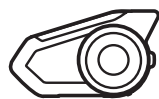
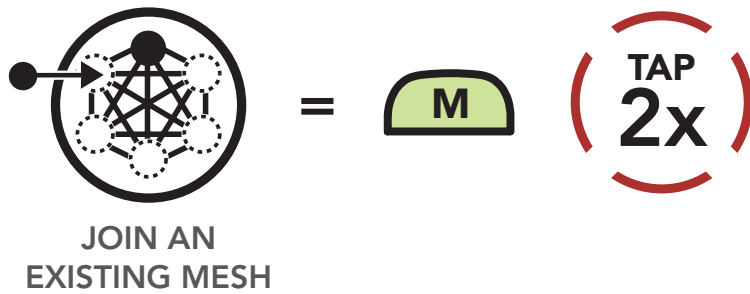
Mesh Intercom Conference with Bluetooth Intercom Participant

Note: A user can join the Mesh within **30 seconds** after hearing the invitation voice prompt.

8.3.2 Join an Existing Mesh

Users that did not accept the invitation from the creator or were not invited can request to join the Mesh.

Join an Existing Mesh
[Participant]



"Searching for Mesh"

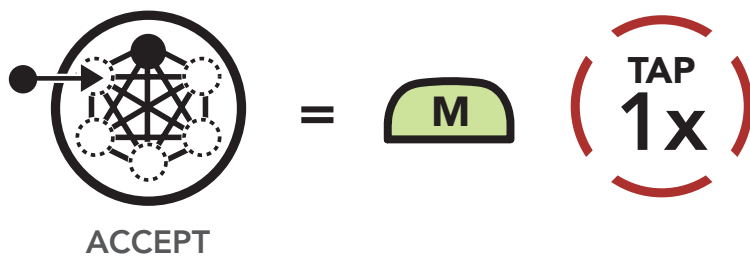
[Creator]



"Would you like to add a new participant?"

The creator of the Mesh can accept the request for a user to join the closed intercom.

Accept a participant
[Creator]



[Participant]



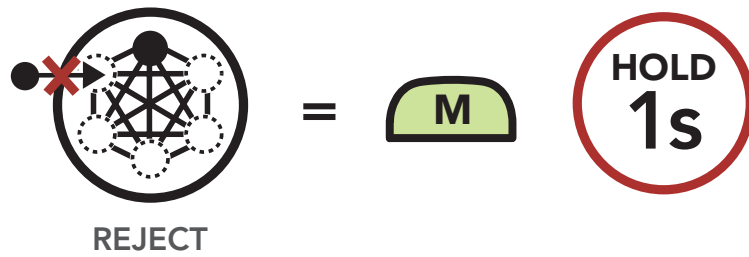
"Joined the mesh"



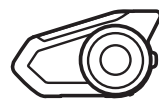
8. MESH INTERCOM

The creator of the Mesh can reject the request for a user to join the closed intercom.

Reject a participant [Creator]



[Participant]

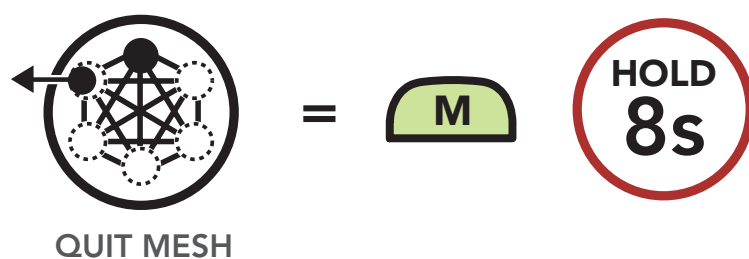


"Request rejected"

8.3.3 Quit the Mesh

Users that quit the Mesh will automatically return to **Public Mode**.

Quit the Mesh



"Quit the mesh"

Note: When a user quits the Mesh, the headset will automatically switch to **Public Mode** and the stored **Mesh Network** information will be deleted.

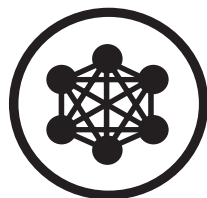


8. MESH INTERCOM

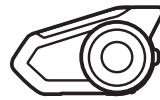
8.3.4 Toggle Public Mode / Private Mode

A user is able to toggle between **Public Mode** and **Private Mode** without quitting the Mesh. This allows the user to keep the **Mesh Network** connection information while in **Public Mode**. The user can toggle to **Private Mode** to communicate with participants from the stored **Mesh Network** information.

Toggle Between Public Mode and Private Mode



PRIVATE
MODE



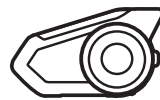
"Private Mode"



=

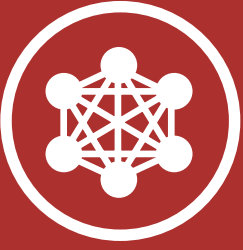


PUBLIC
MODE



"Public Mode"

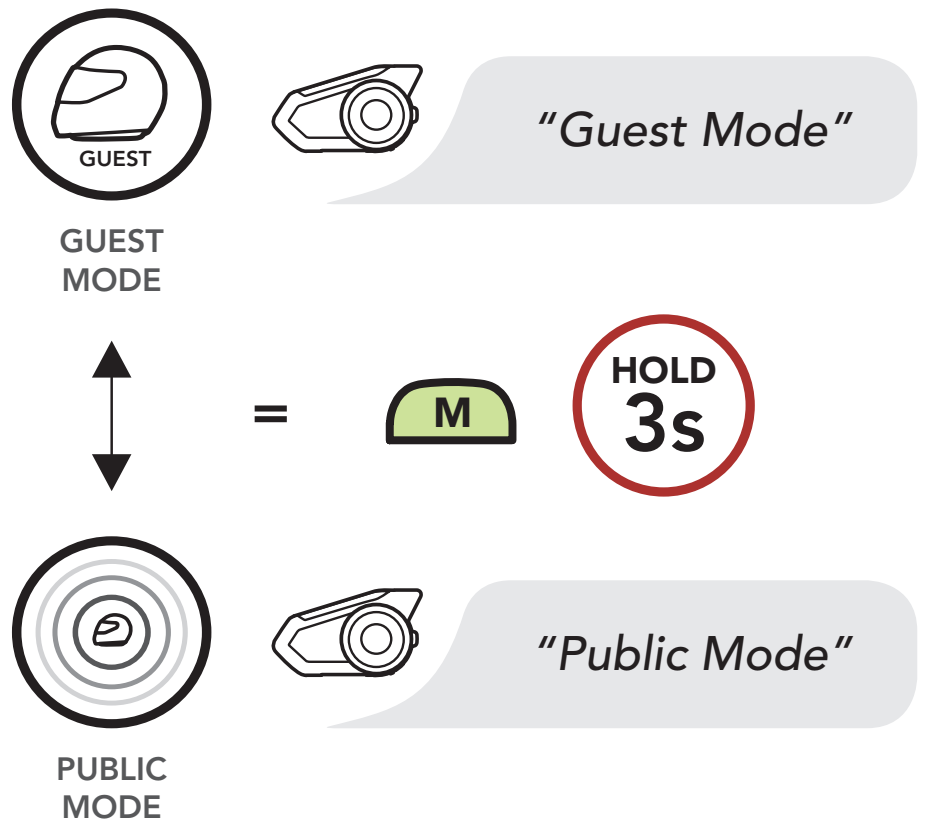
- What is Mesh Intercom?
- Mesh Intercom Mode
- Using the Mesh
- Mesh Intercom Conference with Bluetooth Intercom Participant



8. MESH INTERCOM

8.3.5 Toggle Public Mode / Guest Mode

Toggle Between Public Mode and Guest Mode



What is Mesh Intercom?

Mesh Intercom Mode

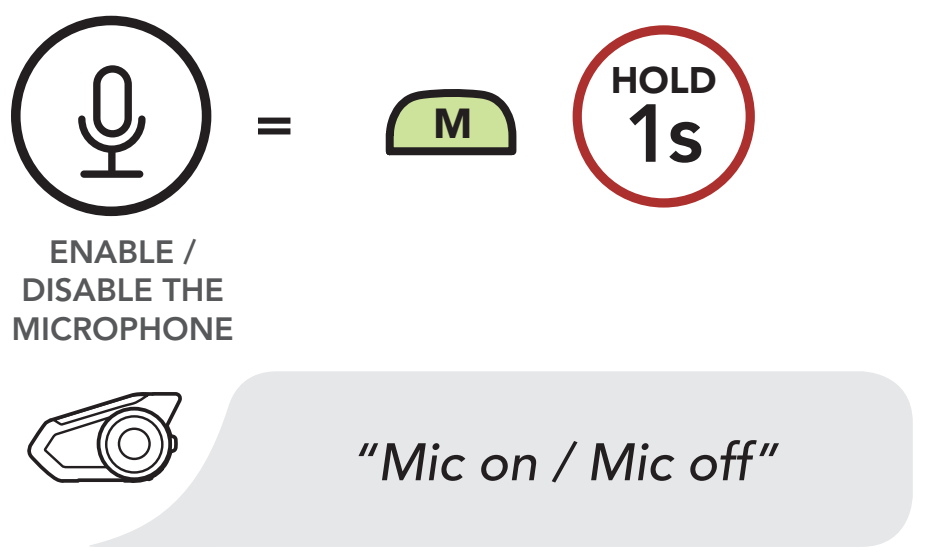
Using the Mesh

Mesh Intercom Conference with Bluetooth Intercom Participant

8.3.6 Mic Enable/Disable (Default: Enable)

Users can enable/disable the microphone when communicating in a **Mesh Intercom**. This can be done in either **Public Mode** or **Private Mode**.

Enable / Disable the Microphone



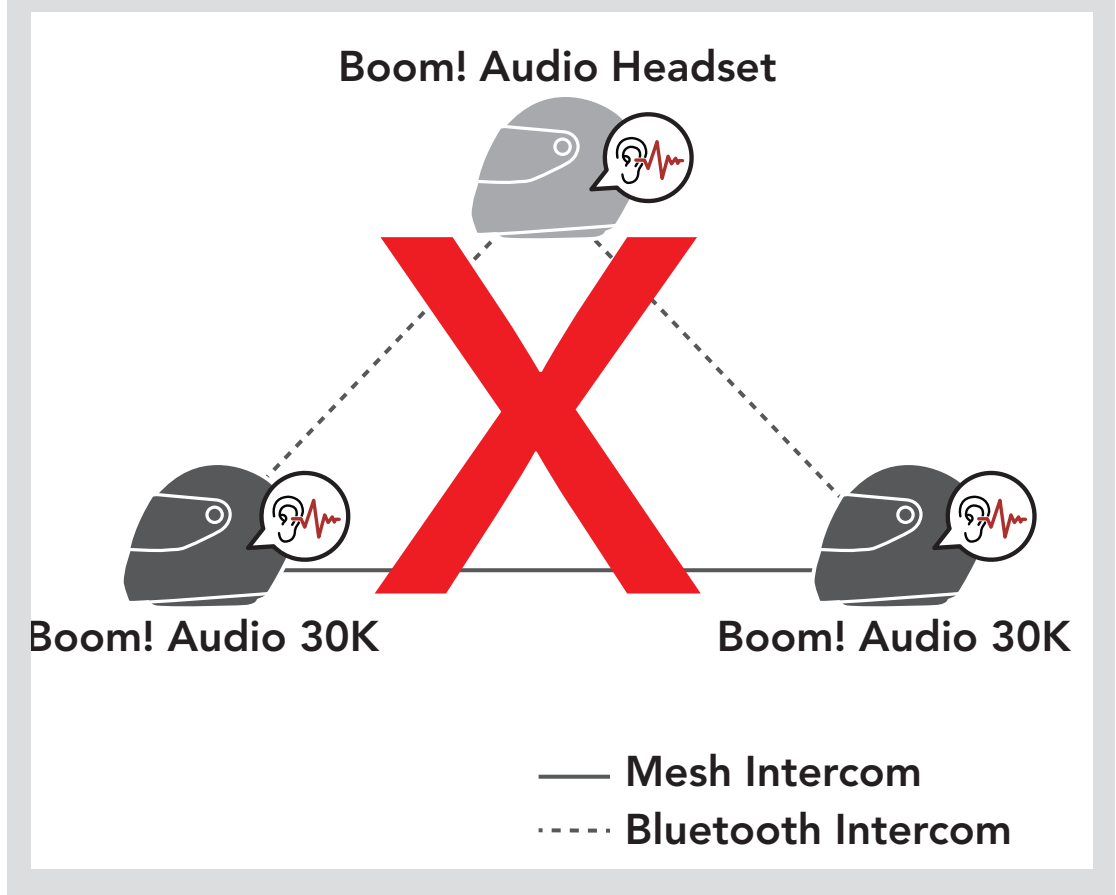


8. MESH INTERCOM

8.4 Mesh Intercom Conference with Bluetooth Intercom Participant

Users can use the existing Bluetooth intercom and **Mesh Intercom** function at the same time. In this case, it is recommended to communicate with other Boom! Audio headsets via Bluetooth intercom connection and use **Mesh Intercom** between Boom! Audio 30K headsets. Please refer to **Section 7: "Bluetooth Intercom Setup"** for more details.

Note: If a closed loop is created, as shown below, each user will experience severe noise issues. Harley-Davidson recommends that a closed loop not be created.



- What is Mesh Intercom?
- Mesh Intercom Mode
- Using the Mesh
- Mesh Intercom Conference with Bluetooth Intercom Participant



Audio Multitasking Settings

Intercom-Audio Overlay Sensitivity

Audio Overlay Volume Management

9. AUDIO MULTITASKING

Audio Multitasking allows you to have an intercom conversation while simultaneously listening to music, FM radio, or GPS instructions. The overlaid audio is played in the background with reduced volume whenever there is an intercom conversation and will return to normal volume once the conversation is finished. The Audio Multitasking feature can be configured through the **Intercom-Audio Overlay Sensitivity** and the **Audio Overlay Volume Management** settings.

9.1 Audio Multitasking Settings

The Mesh Intercom Audio Multitasking feature is always on. The **Bluetooth Intercom Audio Multitasking (Default: Disabled)** setting can be found in the settings menu, accessible through the **Sena Device Manager** or the **Sena Smartphone App**.

Note:

1. **Bluetooth Intercom Audio Multitasking** will be activated during two-way intercom conversations with a headset that also supports this feature.
2. HD Intercom will become disabled temporarily when **Bluetooth Intercom Audio Multitasking** is enabled.
3. For **Bluetooth Intercom Audio Multitasking** to work properly, you need to power the headset off and on. Please restart the headset.
4. Some GPS devices may not support this feature.
5. **Bluetooth Intercom Audio Multitasking** has limited usage for iOS devices.



Audio
Multitasking
Settings

Intercom-
Audio Overlay
Sensitivity

Audio Overlay
Volume
Management

9. AUDIO MULTITASKING

9.2 Intercom-Audio Overlay Sensitivity (Default: 3)

The **Intercom-Audio Overlay Sensitivity** setting can be found in the settings menu, accessible through **Sena Device Manager** or **Sena Smartphone App**. The music, FM radio and GPS volume will be lowered to play in the background if you talk over the intercom while the overlaid audio is playing. You can adjust the intercom sensitivity to activate this background audio mode. Level 1 has the lowest sensitivity and level 5 has the highest sensitivity.

Note: If your voice is not louder than the sensitivity of the selected level, the overlaid audio will not be lowered.

9.3 Audio Overlay Volume Management (Default: Disable)

The **Audio Overlay Volume Management** setting can be found in the settings menu, accessible through **Sena Device Manager** or **Sena Smartphone App**. The music, FM radio and GPS overlaid audio reduces in volume whenever there is an ongoing intercom conversation. If **Audio Overlay Volume Management** is enabled, the volume level of the overlaid audio will not be reduced during intercom conversation.



10. USING THE FM RADIO

10.1 FM Radio On/Off

To turn on or shut off the FM radio, press the **Phone Button** for **1 second** until you hear a double beep.

FM Radio On/Off

Seek and Save Radio Stations

Scan and Save Radio Stations

Temporary Station Preset

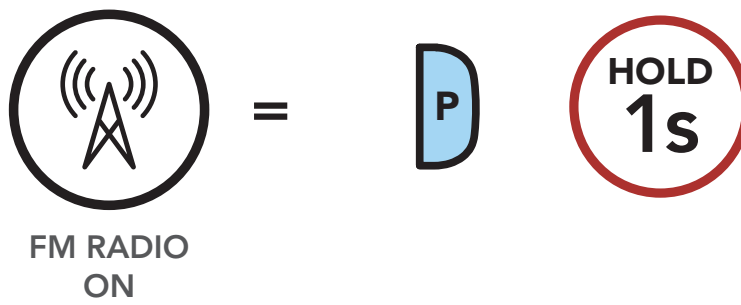
Navigating Preset Stations

Region Selection

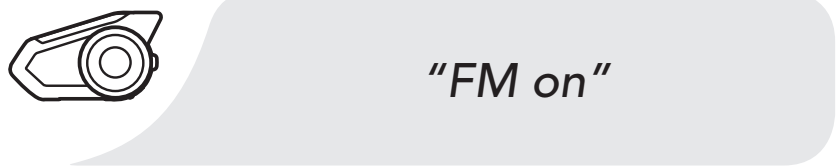
Radio Data System (RDS) Alternative Frequency (AF) Setting

FM Station Guide

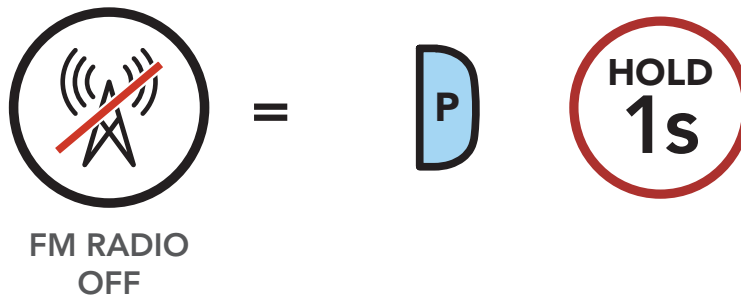
FM Radio On



FM RADIO ON



FM Radio Off



FM RADIO OFF





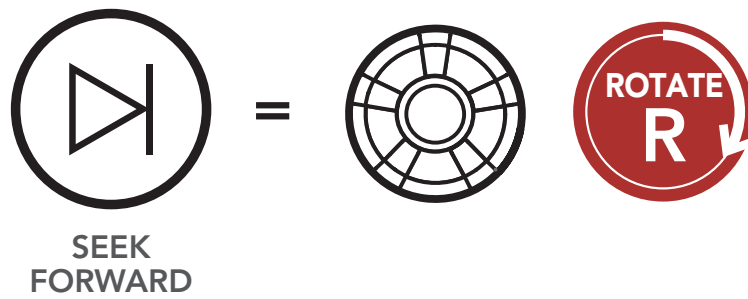
10. USING THE FM RADIO

10.2 Seek and Save Radio Stations

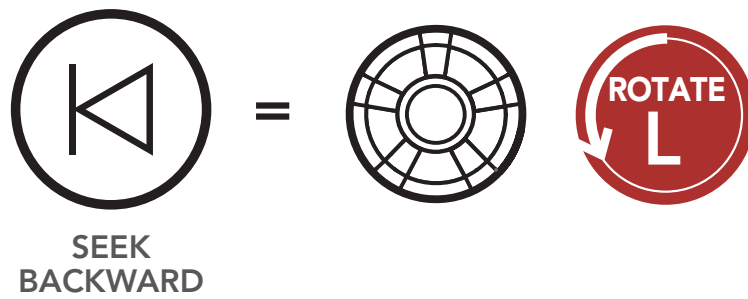
The "Seek" feature searches for radio stations.

1. Rotate while pressing the **Jog Dial** clockwise or counterclockwise to search for radio stations.

Seek Stations Forward

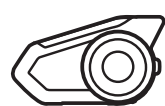
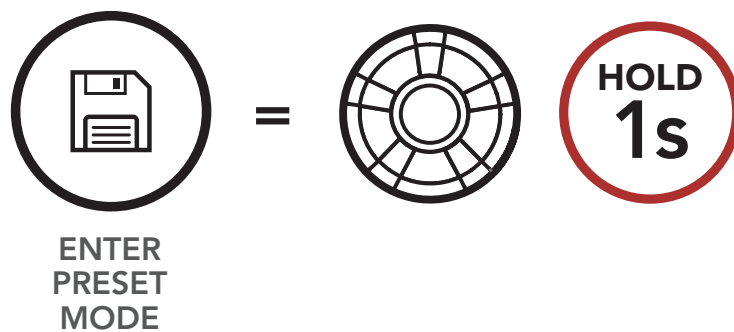


Seek Stations Backward



2. To save the current station, press and hold the **Jog Dial** for **1 seconds** until you hear the voice prompt, "Preset (#)."

Enter Preset Selection Mode



"Preset (#)"

FM Radio On/Off

Seek and Save Radio Stations

Scan and Save Radio Stations

Temporary Station Preset

Navigating Preset Stations

Region Selection

Radio Data System (RDS) Alternative Frequency (AF) Setting

FM Station Guide



10. USING THE FM RADIO

3. Rotate the **Jog Dial** to navigate through the preset numbers that you want to store.

FM Radio On/Off

Seek and Save Radio Stations

Scan and Save Radio Stations

Temporary Station Preset

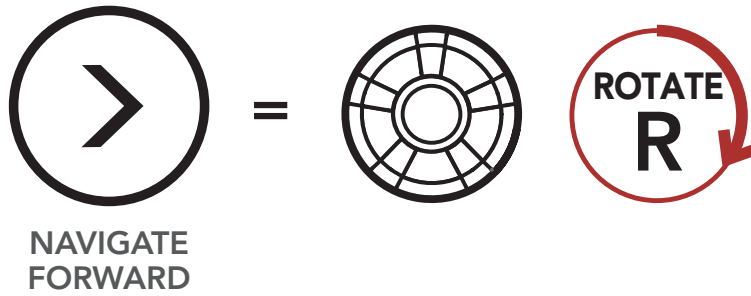
Navigating Preset Stations

Region Selection

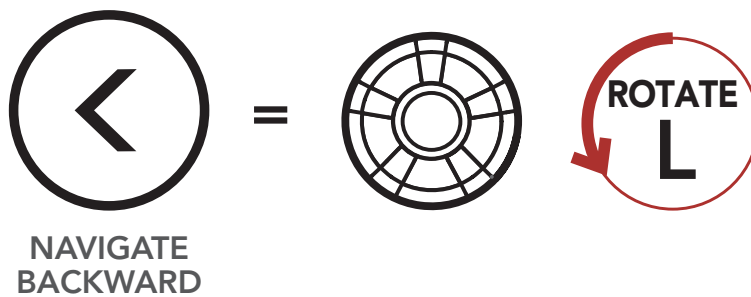
Radio Data System (RDS) Alternative Frequency (AF) Setting

FM Station Guide

Navigate Forward through Preset Stations

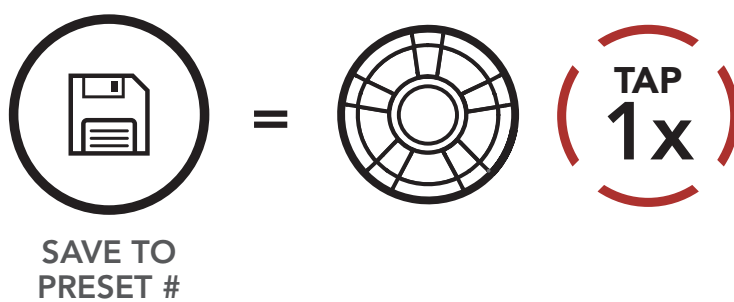


Navigate Backward through Preset Stations

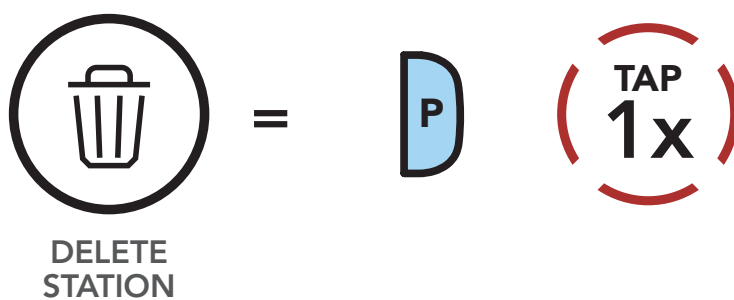


4. Tap the **Jog Dial** to save the station in the preset number you choose. Or, tap the **Phone Button** to delete the station from memory.

Save Station to the Preset Number



Delete Station from Memory





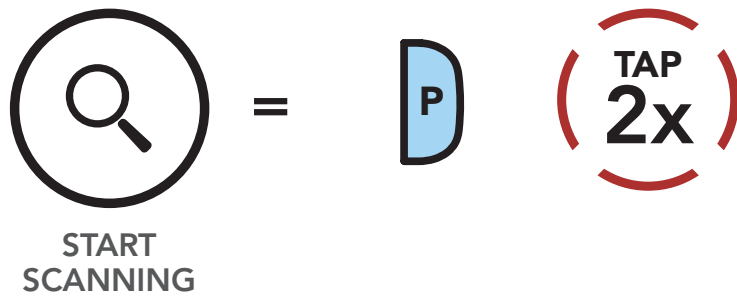
10. USING THE FM RADIO

10.3 Scan and Save Radio Stations

The **“Scan”** function automatically searches for radio stations, starting with the current station’s frequency, then up from there.

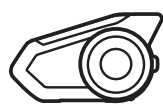
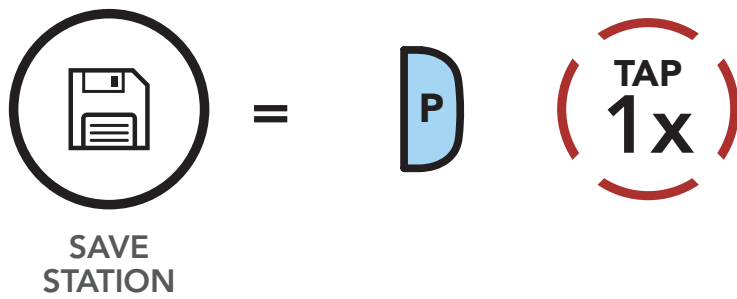
1. Double tap the **Phone Button** to scan for stations.

Scan and Save Radio Stations



2. The tuner pauses at each station it finds for **8 seconds** before moving to the next.
3. To save the current station, tap the **Phone Button**. The station will be saved as the next preset number.

Save the Current Station



“Save preset (#)”

FM Radio On/Off

Seek and Save Radio Stations

Scan and Save Radio Stations

Temporary Station Preset

Navigating Preset Stations

Region Selection

Radio Data System (RDS) Alternative Frequency (AF) Setting

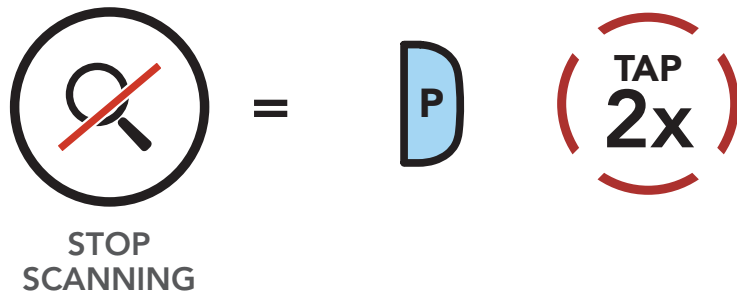
FM Station Guide



10. USING THE FM RADIO

4. To stop scanning, double tap the **Phone Button**.

Stop Scanning



FM Radio
On/Off

Seek and
Save Radio
Stations

Scan and
Save Radio
Stations

Temporary
Station Preset

Navigating
Preset
Stations

Region
Selection

Radio Data
System (RDS)
Alternative
Frequency
(AF) Setting

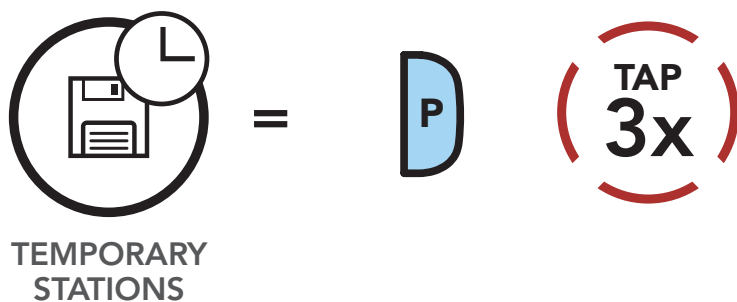
FM Station
Guide

10.4 Temporary Station Preset

The **Temporary Preset** feature automatically finds and saves the nearest 10 radio stations without changing your existing preset stations.

1. Tap the **Phone Button** three times to automatically find and save 10 stations.

Temporary Stations



2. The temporary preset stations will be cleared when the headset reboots.

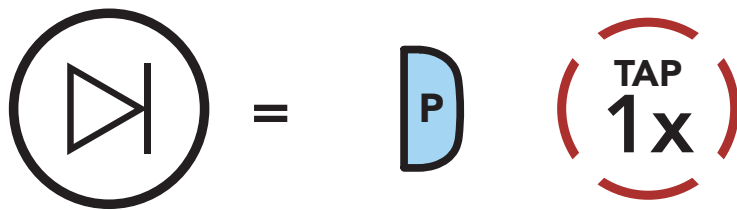


10. USING THE FM RADIO

10.5 Navigating Preset Stations

Using the methods above, up to 10 radio stations can be stored. Tap the **Phone Button** to navigate through the saved stations.

Navigate through Preset Stations



NAVIGATE
FORWARD

Note: You can use the **Boom Audio Bluetooth Device Manager** or the **Sena Smartphone App** to save the preset stations.

10.6 Region Selection (Default: Worldwide)

You can select the proper FM frequency range for your location from the **Boom Audio Bluetooth Device Manager** or the **Sena Smartphone App**. Using the region setting, you can optimize the seek function to avoid unnecessary frequency ranges.

Region	Frequency range	Step
Worldwide	76.0 ~ 108.0 MHz	± 100 kHz
North America, South America and Australia	87.5 ~ 107.9 MHz	± 200 kHz
Asia and Europe	87.5 ~ 108.0 MHz	± 100 kHz
Japan	76.0 ~ 95.0 MHz	± 100 kHz

FM Radio
On/Off

Seek and
Save Radio
Stations

Scan and
Save Radio
Stations

Temporary
Station Preset

Navigating
Preset
Stations

Region
Selection

Radio Data
System (RDS)
Alternative
Frequency
(AF) Setting

FM Station
Guide



10. USING THE FM RADIO

10.7 Radio Data System (RDS) Alternative Frequency (AF) Setting (Default: Disable)

FM Radio
On/Off

Seek and
Save Radio
Stations

Scan and
Save Radio
Stations

Temporary
Station Preset

Navigating
Preset
Stations

Region
Selection

Radio Data
System (RDS)
Alternative
Frequency
(AF) Setting

FM Station
Guide

The **RDS AF** setting can be found in the settings menu, accessible through **Boom Audio Bluetooth Device Manager** or **Sena Smartphone App**.

When radio station signals get too weak for a good reception, with **RDS AF** enabled, the radio receiver re-tunes to a station with better reception. If **RDS AF** is disabled, you'll have to find stronger stations manually.

10.8 FM Station Guide (Default: Enable)

The **Station Guide** setting can be found in the settings menu, accessible through **Boom Audio Bluetooth Device Manager** or **Sena Smartphone App**.

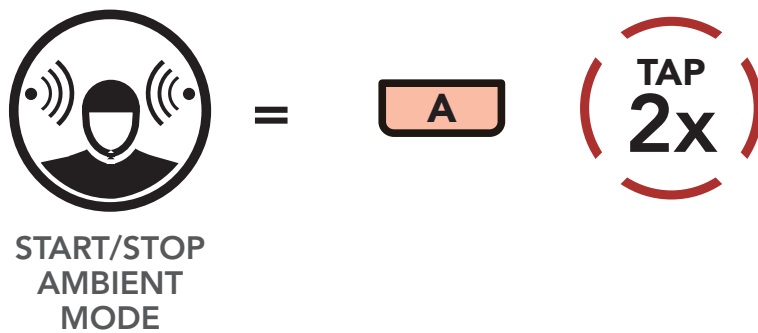
When **FM Station Guide** is enabled, FM station frequencies are given by voice prompts as you select preset stations. When **FM Station Guide** is disabled, the voice prompts on FM station frequencies will not be given as you select preset stations.



11. AMBIENT MODE

You can hear the ambient sound outside of your helmet by activating the **Ambient Mode**. To activate the **Ambient Mode**, press the **Ambient Mode Button** twice which is placed on the bottom of the clamp unit. To deactivate the **Ambient Mode**, press the **Ambient Mode Button** twice again.

Ambient Mode



Note: The **Ambient Mode** has higher priority than mobile phone, so you cannot listen to music, or have an intercom conversation if the **Ambient Mode** is activated.

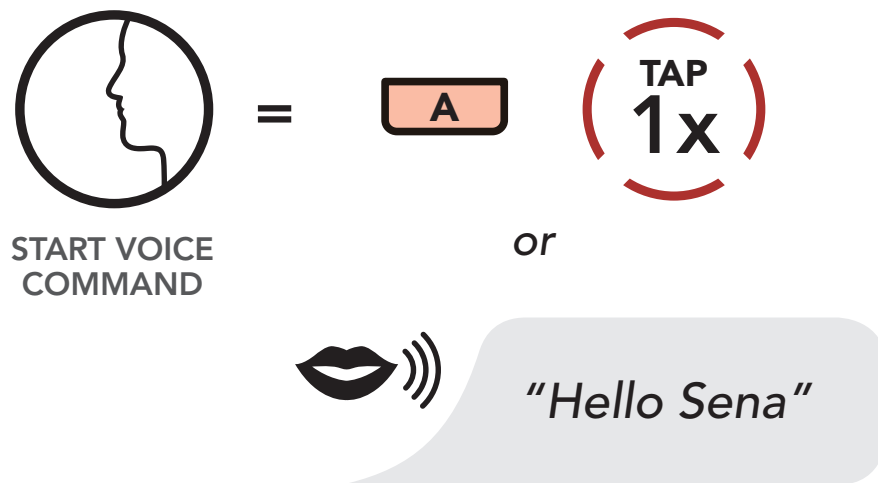


Voice Command Setting

12. VOICE COMMAND

The voice command of the headset allows you to operate certain operations by simply using your voice. You can control the headset completely handsfree using the voice recognition. The voice command function works only with English commands.

Voice Command



Speak a voice command from the table below:

Mode Status	Function	Voice Command
Standby / Intercom	Start/End each Intercom	“Intercom [one, two, three]”
	End all intercoms	“End intercom”
	Call last intercom	“Last intercom”
	Group intercom	“Group intercom”
	Intercom pairing	“Pairing intercom”
	Cancelling operations	“Cancel”



12. VOICE COMMAND

Voice Command Setting

Mode Status	Function	Voice Command
Standby / Music / FM Radio	Play/Pause music	"Music" or "Stereo"
	Turn on/off FM radio	"FM radio"
	Check battery	"Check battery"
	Speed dialing	"Speed dial [one, two, three]"
	Redial the last call	"Redial"
	Voice command help	"What can I say?"
	Check connected devices	"Connected devices"
	Configuration menus	"Configuration"
Music / FM Radio	Next track (music) / next preset (FM radio)	"Next"
	Previous track (music) / previous preset (FM radio)	"Previous"
	Stop music / FM radio	"Stop"
Standby / Mesh Intercom	Mesh intercom On/Off	"Mesh intercom"
	End the Bluetooth and Mesh intercom	"End intercom"
	Create a Mesh	"Create Mesh"
	Quit the Mesh	"Quit Mesh"



Voice Command Setting

12. VOICE COMMAND

Note:

- Voice command performance may vary based on the environmental conditions including riding speed, helmet type and ambient noise. To improve the performance, minimize wind noise on the microphone by using a large microphone sponge and closing the visor.
- To activate the voice command during intercom conversation, tap the **Ambient Mode Button** once.

12.1 Voice Command Setting (Default: Enable)

A **Voice Command** setting can be found in the settings menu, accessible through **Boom Audio Bluetooth Device Manager** or **Sena Smartphone App**.

When **Voice Command** is enabled, you can use your voice to give a command the headset operate certain operations completely handsfree. If **Voice Command** is disabled, you will need to operate all of the functions using the buttons on the headset.



13. GENERAL SETTINGS

13.1 Function Priority

The headset prioritizes connected devices in the following order:

Function Priority

Firmware Upgrades

Voice Prompts

Sidetone

Delete All Bluetooth Pairing Information

(highest)

Ambient Mode

Mobile phone

Voice command mode

Mesh Intercom / Bluetooth Intercom

Music sharing via Bluetooth stereo

FM radio

Stereo music by audio cable

(lowest)

Bluetooth stereo music

A lower-priority function gets interrupted by a higher-priority function. For example, stereo music will be interrupted by an **Intercom Conversation**; an **Intercom Conversation** will be interrupted by an incoming mobile phone call.

13.2 Firmware Upgrades

The headset supports firmware upgrades. You can upgrade the firmware using the **Boom Audio Bluetooth Device Manager**. Please visit oem.sena.com/harley-davidson on to check for the latest software downloads.

Click Here to Visit
oem.sena.com/harley-davidson



13. GENERAL SETTINGS

13.3 Voice Prompts (Default: Enable)

Function
Priority

Firmware
Upgrades

Voice
Prompts

Sidetone

Delete All
Bluetooth
Pairing
Information

A **Voice prompt** setting can be found in the settings menu, accessible through **Boom Audio Bluetooth Device Manager** or **Sena Smartphone App**.

If **Voice prompt** is enabled, you can hear **Voice prompts** for different kinds of features. If **Voice prompt** is disabled, **Voice prompts** are silenced except for those in the Configuration Menu, battery level indication, speed dial, and FM radio functions.

13.4 Sidetone (Default: Disable)

A **Sidetone** setting can be found in the settings menu, accessible through **Boom Audio Bluetooth Device Manager** or **Sena Smartphone App**.

Sidetone is the sound of your own voice as picked up by your headset's microphone and reproduced in your own ear, by your own speaker. It helps you to naturally speak at the correct level according to varying helmet noise conditions. If this feature is enabled, you can hear what you are speaking during an intercom conversation or a phone call.



13. GENERAL SETTINGS

13.5 Delete All Bluetooth Pairing Information

Function
Priority

Firmware
Upgrades

Voice
Prompts

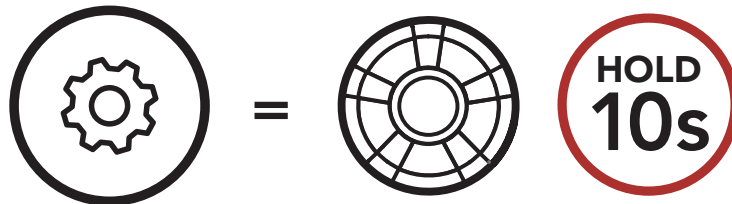
Sidetone

Delete All
Bluetooth
Pairing
Information

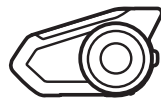
A **Delete All Bluetooth Pairing Information** setting can be found in the **Headset Configuration Menu**.

Tap the **Phone Button** when in this menu to **Delete All Bluetooth Pairing Information** stored in the headset.

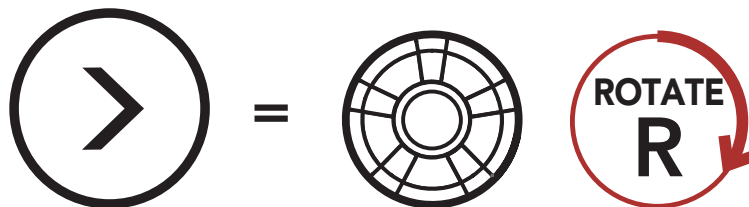
Access Delete All Pairings in the Configuration Menu



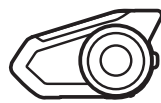
ACCESS
CONFIG.
MENU



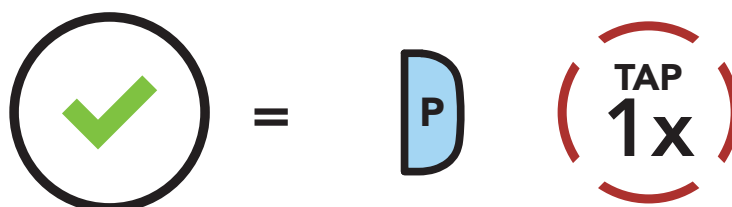
"Configuration menu"



NAVIGATE
FORWARD



"Delete all pairings"



EXECUTE



Pairing with the Remote Control

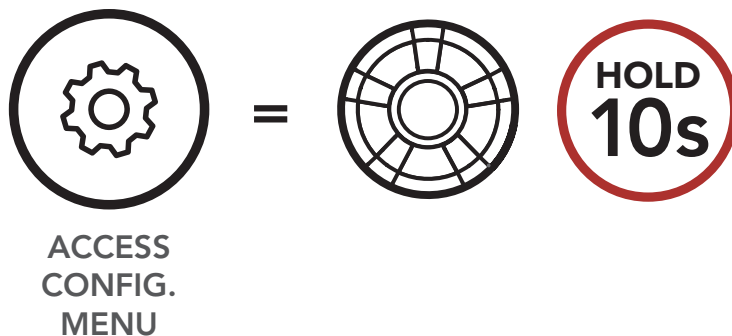
14. REMOTE CONTROL

You can remotely control the headset using Sena Remote Control devices (sold separately) such as a Handlebar Remote or a Wristband Remote. This eliminates the need to remove your hands from the handlebars for button operations.

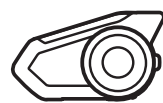
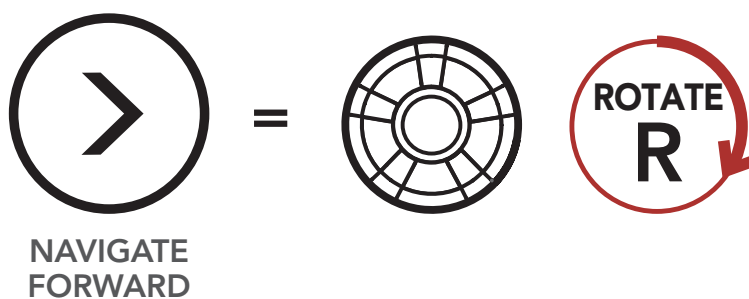
14.1 Pairing with the Remote Control

1. Turn on the headset and the Remote Control device.
2. Execute **Remote Control Pairing** in the **Headset Configuration Menu**.

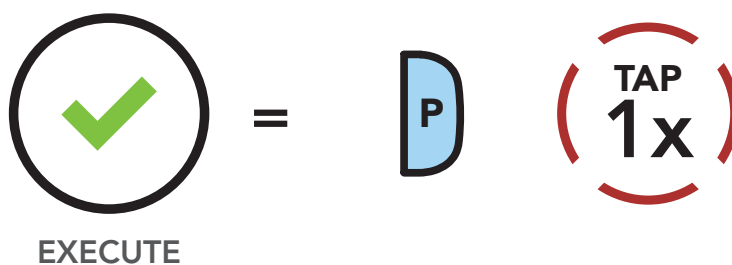
Access Remote Control Pairing in the Configuration Menu



"Configuration menu"



"Remote control pairing"





Pairing with the Remote Control



14. REMOTE CONTROL

3. Enter pairing mode in the Remote Control device. The headset will automatically connect with the Remote Control device in pairing mode. You will hear a voice prompt, **"Remote control connected"**, when they are successfully paired.

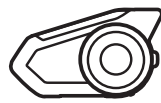
Enter Pairing Mode



=

Enter Pairing Mode on Remote Control.

REMOTE CONTROL



"Remote control connected"



15. TROUBLESHOOTING

Please visit oem.sena.com/harley-davidson for answers to frequently asked questions. This detailed online FAQ section deals with troubleshooting, illustrates case studies and contains tips on using the headset.

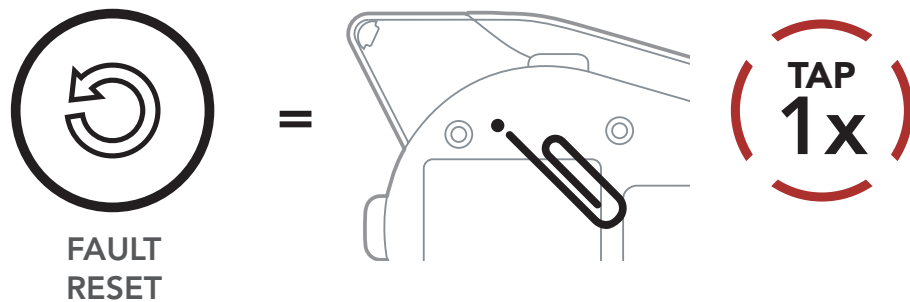
Fault Reset
Factory Reset

[Click Here to Visit
oem.sena.com/harley-davidson](https://oem.sena.com/harley-davidson)

15.1 Fault Reset

When the headset is not working properly, you can easily reset the unit:

1. Locate the pinhole reset button below on the back of the main unit.
2. Gently insert a paperclip into the hole and tap the **Fault Reset Button** with light pressure.



3. The headset will shut down.

Note: Fault Reset will not restore the headset to factory default settings.

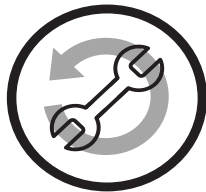


15. TROUBLESHOOTING

15.2 Factory Reset

Fault Reset
Factory Reset

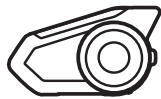
To erase all of your settings and start fresh, the headset can be restored to factory default settings using the **Factory Reset** feature.



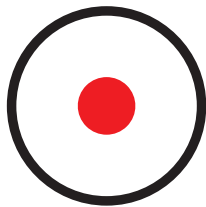
=



FACTORY
RESET



"Factory Reset"



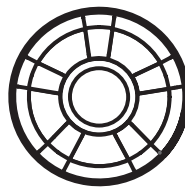
=

Solid red

LED STATUS



=



EXECUTE



"Headset reset, good-bye"

Note: If you press the **Phone Button** or don't press the **Jog Dial** within **5 seconds**, the reset attempt is canceled and the headset returns to standby mode. You will hear a voice prompt saying **"Canceled"**.

CERTIFICATION AND SAFETY APPROVALS

FCC Compliance Statement

This device complies with part 15 of the FCC rules.

(1) This device may not cause harmful interference, and

(2) This device must accept any interference received, including interference that may cause undesired operation.

This equipment has been tested and found to comply with the limits for a Class B digital device pursuant to part 15 of the FCC rules. These limits are designed to provide reasonable protection against harmful interference in a residential installation. This equipment generates, uses and can radiate radio frequency energy and, if not installed and used in accordance with the instructions, may cause harmful interference to radio communications. However, there is no guarantee that interference will not occur in a particular installation. If this equipment does cause harmful interference to radio or television reception, which can be determined by turning the equipment on and off, the user is encouraged to try to correct the interference by one or more of the following measures:

- Reorient or relocate the receiving antennae
- Increase the separation between the equipment and the receiver
- Connect the equipment into an outlet on a circuit different from that to which the receiver is connected.
- Consult the dealer or an experienced radio/TV technician for help.

FCC RF Exposure Statement

This equipment complies with FCC radiation exposure limits set forth for an uncontrolled environment. End users must follow the specific operating instructions for satisfying RF exposure compliance. The antenna used for this transmitter must not transmit simultaneously with any other antenna or transmitter, except in accordance with FCC multi-transmitter product procedures.

FCC Caution

Any changes or modifications to the equipment not expressly approved by the party responsible for compliance could void user's authority to operate the equipment.

CE Declaration of Conformity

This product is CE marked according to the provisions of the R&TTE Directive (1999/5/EC). Hereby, Sena declares that this product is in compliance with the essential requirements and other relevant provisions of Directive 1999/5/EC. For further information, please consult sena.com. Please note that this product uses radio frequency bands not harmonized within EU. Within the EU this product is intended to be used in Austria, Belgium, Denmark, Finland, France, Germany, Greece, Ireland, Italy, Luxembourg, The Netherlands, Portugal, Spain, Sweden, United Kingdom and within EFTA in Iceland, Norway and Switzerland.

Industry Canada Statement

This device complies with Industry Canada license-exempt RSS standard(s). Operation is subject to the following two conditions: Operation is subject to the following two conditions:

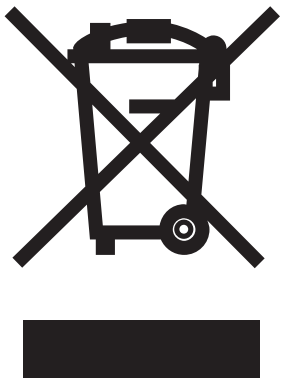
- (1) This device may not cause interference.
- (2) This device must accept any interference, including interference that may cause undesired operation of the device.

Bluetooth License

The Bluetooth® word mark and logos are owned by the Bluetooth SIG, Inc. and any use of such marks by Sena is under license. Other trademarks and trade names are those of their respective owners.

The product is compliant with and adopts the Bluetooth® Specification 4.1 and has successfully passed all interoperability tests that are specified in the Bluetooth® specification. However, interoperability between the device and other Bluetooth®-enabled products is not guaranteed.

WEEE (Waste Electrical and Electronic Equipment)



The crossed-out wheel bin symbol on the product, literature, or packaging reminds you that all electrical and electronic products, batteries, and accumulators must be taken to separate collection at the end of their working life. This requirement applies to the European Union and other locations where separate collection systems are available. To prevent possible harm to the environment or human health from uncontrolled waste disposal, please do not dispose of these products as unsorted municipal waste, but hand it in at an official collection point for recycling.

LIMITED PRODUCT WARRANTY DISCLAIMERS, AND LIMITATIONS

Limited Warranty

Limited Warranty

Harley-Davidson, Inc. ("Harley-Davidson") guarantees the product quality based on the technical specification stated in the product manual, and data regarding product warranty. Here, product warranty extends to the product only.

Warranty Period

Harley-Davidson warrants that this product shall conform to and perform in accordance with published technical specifications and the accompanying written materials, and shall be free of defects in materials and workmanship, for a period of two (2) years from the date of purchase by the first consumer purchaser of the Product. This limited warranty extends only to the original consumer purchaser of the Product and is not assignable or transferable to any subsequent purchaser/end-user.

Termination

Quality warranty of the product becomes effective on the date of initial purchase. In addition, the quality warranty of the product expires when the warranty period expires. However, in the following cases, the warranty will be terminated prematurely.

- In the event the product has been sold or transferred to a third party.
- In the event the manufacturer's name, serial number, product label, or other markings have been modified or removed.
- In the event any unauthorized person has tried to disassemble, repair, or modify the product.

Notice and Waiver

By buying and using this product, you relinquish considerable legal rights including any claim for compensation for damages. Therefore, be certain to read and understand the following terms and conditions before using the product. Use of this product will constitute consent to this agreement, and forfeiture of rights to all claims.

1. You must completely understand and accept all risks (including those occurring due to any careless behavior of yours or others) which may occur during the use of this product.
2. You are responsible for ensuring that your medical condition permits usage of the product and that you are in sufficient physical condition for using any device which can be used with it. In addition, you must ensure that the product does not limit your abilities and that you are able to use it safely.
3. You must be an adult who can take responsibilities for using the product.
4. You must read and understand the following warnings and alerts:
 - Harley-Davidson and Sena Technologies, Inc. ("Sena"), together with employees, managers, partners, subsidiaries, representatives, agents, supporting firms and suppliers, sole sellers of Harley-Davidson and Sena

(collectively referred to as “the company”) recommend that, before using the product and similar devices of any brands including its derivative models, you collect any relevant information in advance and be entirely prepared in terms of weather, traffic situation, and road conditions.

- When you use the product while you operating any vehicle or equipment such as motorcycles, scooters, mopeds, ATVs, or quad-bikes (hereinafter called “transportation means”), you need to follow the safety precautions provided by the manufacturer of the vehicle.
 - When you use the product, use good judgment; never use it under the influence of alcohol.
5. You must read and completely understand all terms and conditions of legal rights and warnings that are involved in using the product. In addition, usage of the product constitutes acceptance of all terms and conditions regarding waiver of rights.

Warranty Exclusions

Reasons for Limited Liabilities

If you do not return the product after purchasing it, you relinquish all rights to liabilities, loss, claims, and claims for reimbursement of expenses (including attorney’s fees). Therefore, Harley-Davidson will not be liable for physical injury, death, or any loss or damage of transportation means, possessions, or assets which belong to you or third parties that may have occurred while you use the product. Further, Harley-Davidson will not be liable for any substantial damage not related to the condition, environment, or malfunction of the product. All risks related with the operation of the product depend entirely on the user regardless of its use by the initial purchaser or a third party.

Use of this product may violate local or national laws. In addition, be aware once again that correct and safe use of the product is entirely your responsibility.

Limitation of Liability

TO THE FULL EXTENT ALLOWED BY LAW, HARLEY-DAVIDSON EXCLUDES FOR ITSELF AND ITS SUPPLIERS ANY LIABILITY, WHETHER BASED IN CONTRACT OR TORT (INCLUDING NEGLIGENCE), FOR INCIDENTAL, CONSEQUENTIAL, INDIRECT, SPECIAL, OR PUNITIVE DAMAGES OF ANY KIND, OR FOR LOSS OF REVENUE OR PROFITS, LOSS OF BUSINESS, LOSS OF INFORMATION OR DATA, OR OTHER FINANCIAL LOSS ARISING OUT OF OR IN CONNECTION WITH THE SALE, INSTALLATION, MAINTENANCE, USE, PERFORMANCE, FAILURE, OR INTERRUPTION OF ITS PRODUCTS, EVEN IF HARLEY-DAVIDSON OR ITS AUTHORIZED RESELLER HAS BEEN ADVISED OF THE POSSIBILITY OF SUCH DAMAGES, AND LIMITS ITS LIABILITY TO REPAIR, REPLACEMENT, OR REFUND OF THE PURCHASE PRICE PAID, AT HARLEY-DAVIDSON’S OPTION. THIS DISCLAIMER OF LIABILITY FOR DAMAGES WILL NOT BE AFFECTED IF ANY REMEDY PROVIDED HEREIN SHALL FAIL OF ITS ESSENTIAL PURPOSE. IN ANY CASE, THE TOTAL COMPENSATION LIABILITIES OF HARLEY-DAVIDSON OR ITS SALES AGENTS SHALL NOT EXCEED THE PRICE PAID FOR THE PRODUCT BY THE PURCHASER.

Liabilities Disclaimer

In addition to damages which may occur due to the use of the product, Harley-Davidson will not be liable for damages of the product which occur due to the following events.

- In the event the product is misused or used for purposes other than its intended purposes.
- In the event the product is damaged because the user does not follow the content of the product manual.
- In the event the product is damaged because it has been left unattended or has undergone any other accident.
- In the event the product is damaged because the user has used any parts or software which are not provided by the manufacturer.
- In the event the product is damaged because the user has disassembled, repaired, or modified it in such way as is not explained in the product manual.
- In the event the product is damaged by a third party.
- In the event the product is damaged due to Acts of God (including fire, flood, earthquake, storm, hurricane or other natural disaster).
- In the event the surface of the product is damaged by use.

Warranty Service

To obtain product warranty service, send the defective product, at your expense, to the manufacturer or the seller along with proof of purchase (a receipt that shows the purchase date, a product registration certificate of the Website, and other relevant information). Take necessary measures to protect the product. In order to get a refund or replacement, you must include the whole package as it was purchased. Harley-Davidson will provide free-of-charge repair or replacement service for the product when product defects occur within the scope of the product warranty during the warranty period.