

SMART HJC 20B Quick Start Guide

ENGLISH

Ride Connected

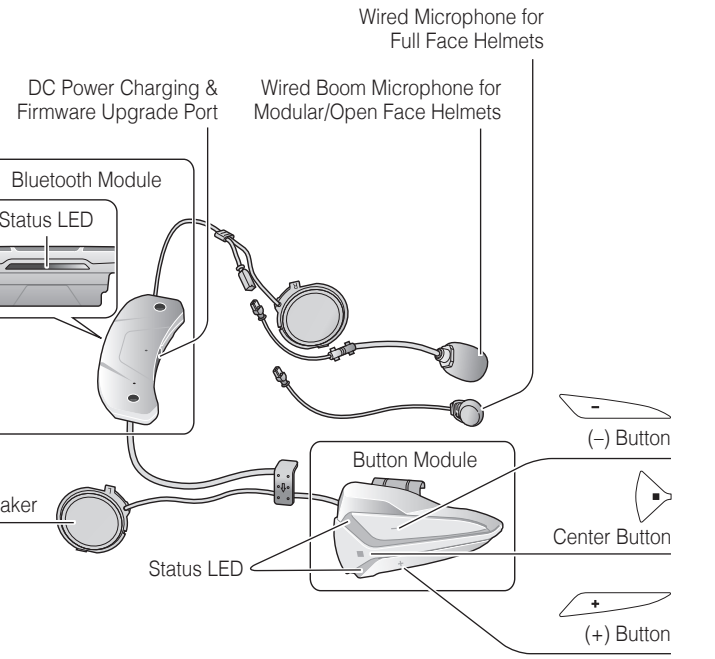
Getting Started

Modular/Open Face Helmet Installation

Full Face Helmet Installation

Button Operation

Bluetooth Pairing Phone, MP3 and GPS



SMART HJC 20B compatible HJC helmets can be found by scanning the QR code of the product box.

Blast your favorite tunes, talk over the intercom with your buddies, hear directions from your GPS and more, all through your headset. With built-in Bluetooth® capabilities, Audio Multitasking™, HD speakers and a microphone using Advanced Noise Control™, technology has never felt so minimal or freeing.

BLUETOOTH 4.1

INTERCOM
1.6 KM (1 MILE)*

EIGHT-WAY
INTERCOM

CUSTOM
HELMET FIT

AUDIO
MULTITASKING

ADVANCED NOISE
CONTROL

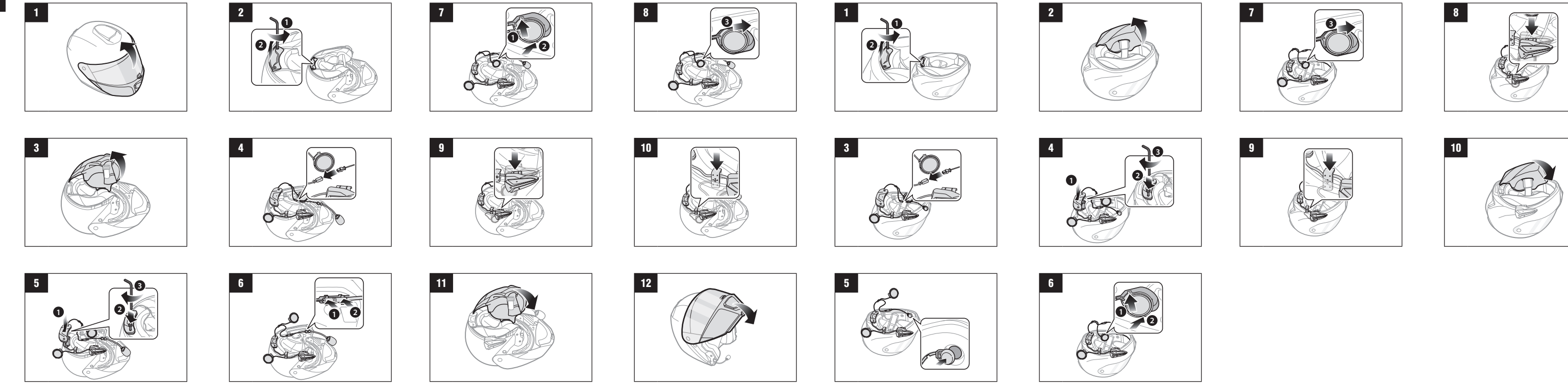
VOICE
COMMAND

MUSIC SHARING

*: in open terrain

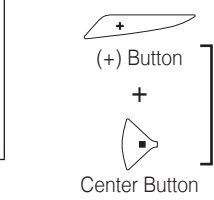
1. This product comes with a Quick Start Guide, which is a basic version of the User's Guide. **A FULL VERSION OF THE USER'S GUIDE CAN BE DOWNLOADED AT WWW.SMARTHJC.COM.**
2. Update this product for free with the latest firmware to fully enjoy the new advanced features built into this product. Visit www.smarthjc.com to see how to update your product.

HJC Corporation
hjchelmets.com
Customer Support: www.smarthjc.com

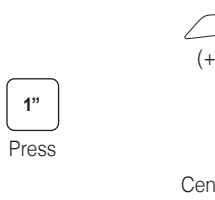


Power On/Off

Powering On

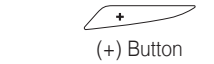


Powering Off



Volume Adjustment

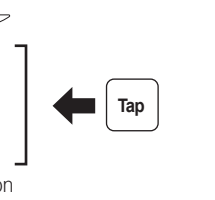
Volume Up



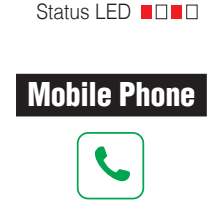
Volume Down



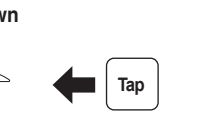
Powering On



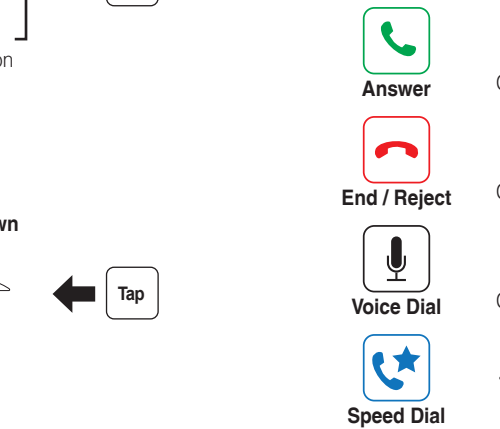
Powering Off



Volume Up



Volume Down



Music



Play / Pause music



Center Button

Press



Track forward



(+) Button

Press



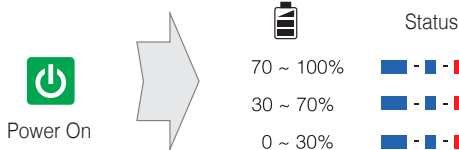
Track backward



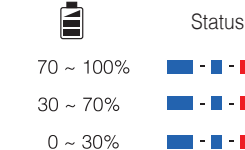
(-) Button

Press

Battery Check



Power On



Status LED

70 ~ 100%

30 ~ 70%

0 ~ 30%

Configuration Menu



Configuration Menu



Center Button

Press

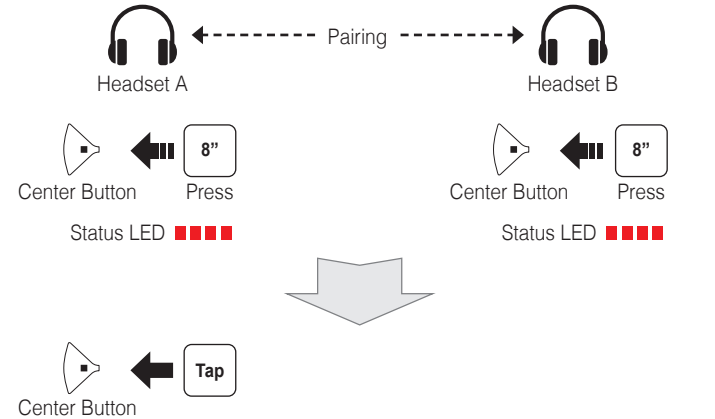
Using the SMART HJC Device Manager

You can upgrade the headset's firmware and configure its settings directly from your PC or Apple computer. Download the **SMART HJC Device Manager**, please visit www.smarthjc.com.

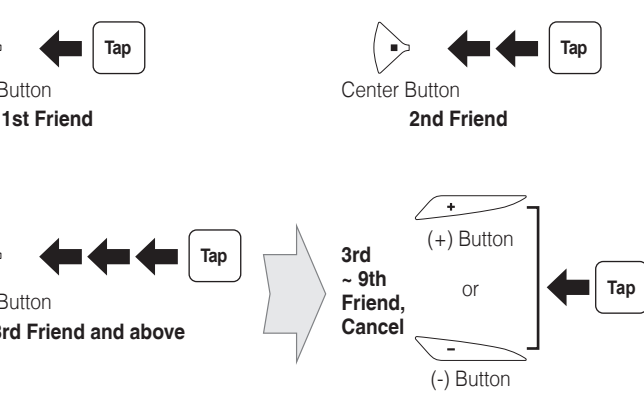
Using the SMART HJC BT Smartphone App

You can configure its settings directly from your smartphone. Download the **SMART HJC BT App** from Google Play (Android) or App Store (iOS).

Intercom Pairing



Start / End Intercom



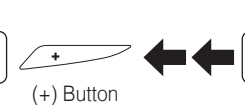
Radio On / Off



(-) Button

Press

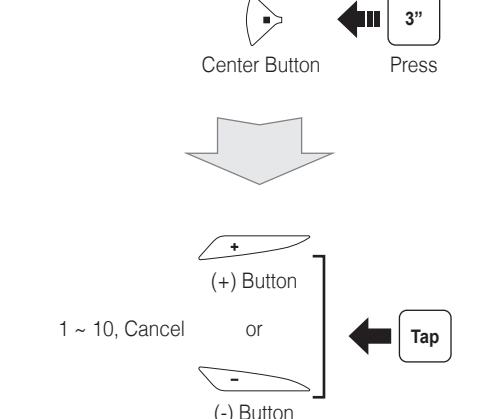
Radio Seek Station



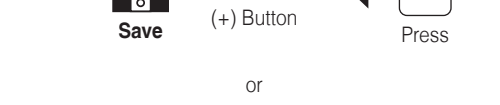
(+) Button

Press

Save Preset While Seeking



Radio Move to Preset Station



(+) Button

Press

Radio Scan Up FM Band



(+) Button

Press

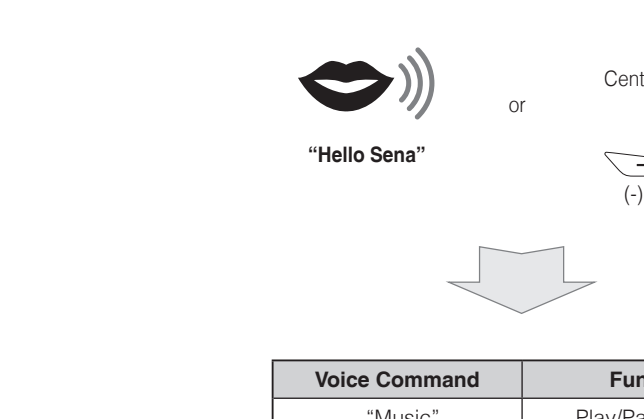
Radio Move to Preset Station



(+) Button

Press

Voice Command



Factory Reset



(+) Button

Press

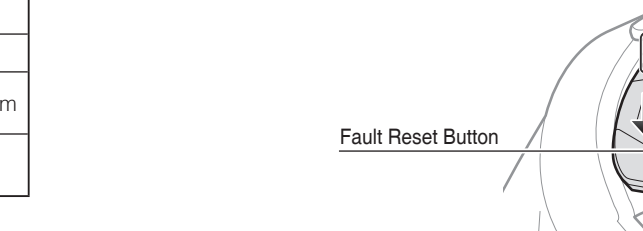
Troubleshooting

Factory Reset

If you want to restore the headset to factory default settings, use the Factory Reset in the configuration menu. The headset automatically restores the default settings and turns off.

Fault Reset

If the headset is not working properly for any reason, reset the headset by gently inserting a paperclip into the pinhole located next to the screw and lightly pressing the Fault Reset Button.



Battery Charging

Please make sure to take off your headset while charging. The headset automatically turns off during charging.

Quick Reference

Type	Operation	Button Command
Basic Operations	Power on	Press the (+) Button and the Center Button for 1 second
	Power off	Tap the (+) Button and the Center Button
	Volume adjustment	Tap the (+) Button or the (-) Button
	Voice Command	Say "Hello Sena" Tap the Center Button and the (-) Button
Mobile Phone	Answer phone call	Tap the Center Button
	End/Reject phone call	Press the Center Button for 2 seconds
	Voice dial	Press the Center Button for 3 seconds
	Speed dial	Press the (+) Button for 3 seconds
Music	Play/Pause music	Press the Center Button for 1 second
	Track forward	Press the (+) Button for 1 second
	Track backward	Press the (-) Button for 1 second

Quick Reference

Type	Operation	Button Command
FM Radio	FM radio on/off	Press the (-) Button for 1 second
	Seek forward	Double tap the (+) Button
	Seek backward	Double tap the (-) Button
Intercom	Intercom pairing	Press the Center Button for 8 seconds Tap the Center Button
	Start/End intercom	Tap the Center Button