

SMART HJC 11B

2nd GEN BASIC MOTORCYCLE BLUETOOTH®
COMMUNICATION SYSTEM FOR HJC HELMETS

HD SPEAKERS

Downloadable Software

Download the **SMART HJC BT App** on [Google Play Store](#) or [App Store](#).



SMART HJC BT

- Device Configuration Setting

Download the following items at www.smarthjc.com



SMART HJC Device Manager

- Firmware upgrade
- Device configuration setting

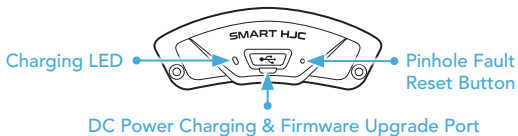


Quick Start Guide, User's Guide

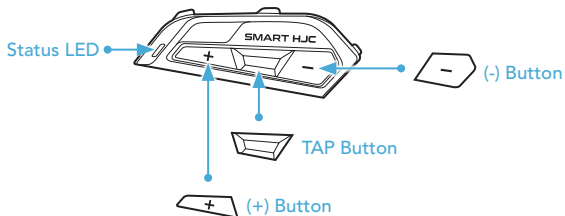
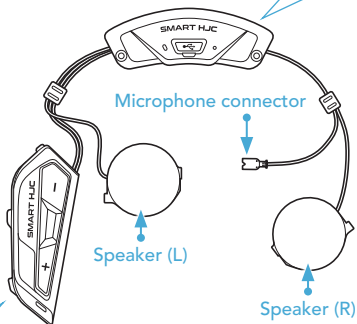


HJC Corporation
www.smarthjc.com

Product Details



Bluetooth Module



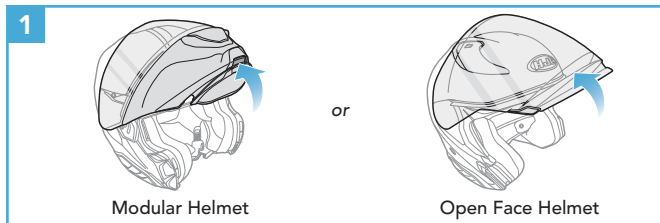
Button Module

Installation

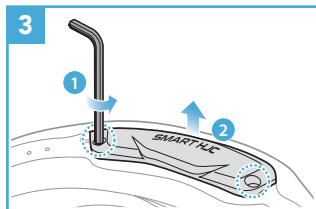
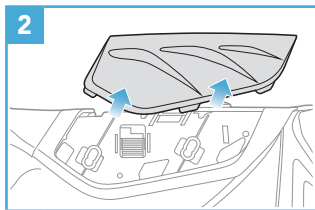
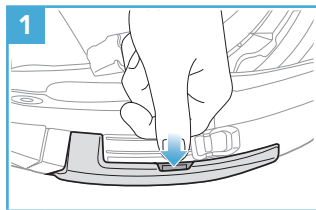
SMART HJC 11B compatible **HJC helmets** can be found at www.smarthjc.com

- For more information about installation, refer to the User's Guide.

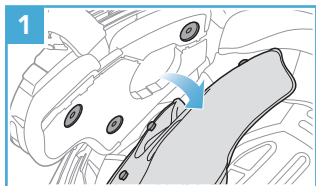
1. Modular Chin Bar / Open & Full Face Visor Opening



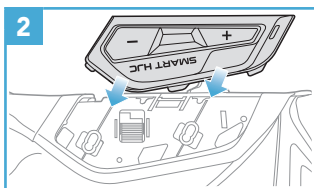
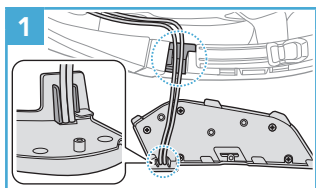
2. Helmet Module Cover Removing



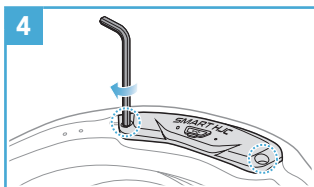
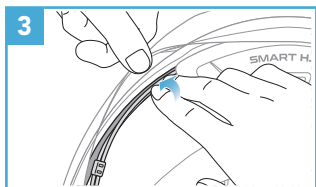
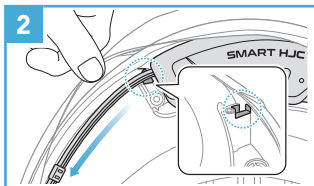
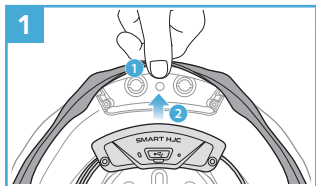
3. Helmet's Cheek Pad Take Off



4. Button Module Installation

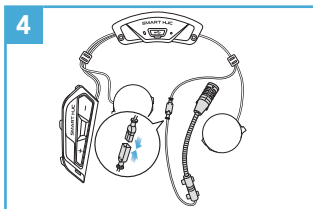
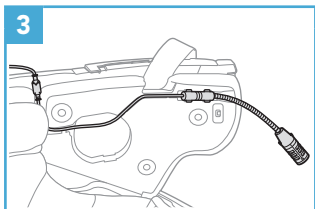
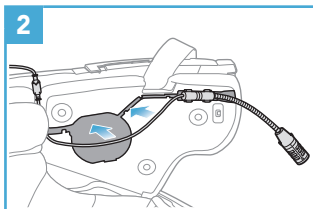
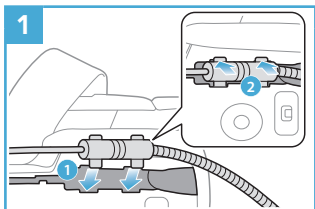


5. Bluetooth Module Installation

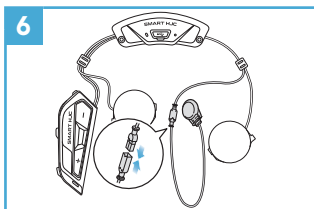
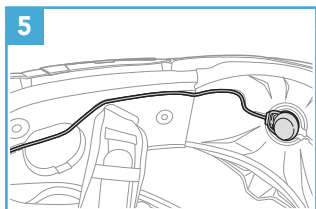
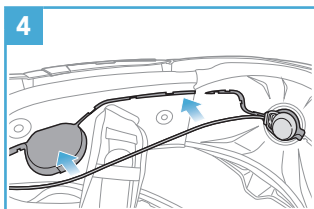
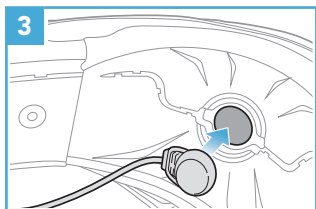
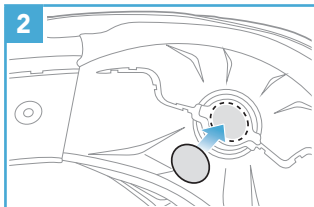
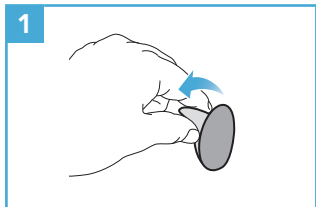


6. Microphone Installation

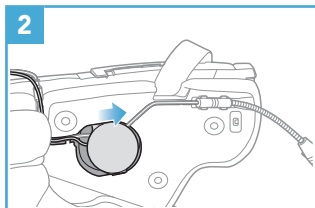
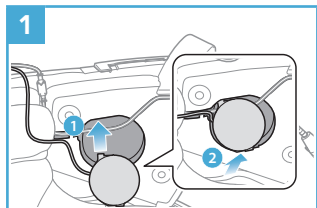
6.1 Modular or Open Face Microphone Installation



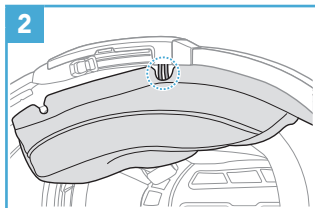
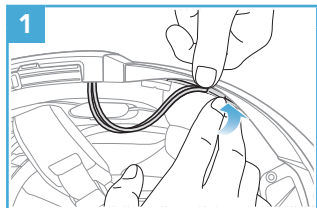
6.2 Full Face Microphone Installation



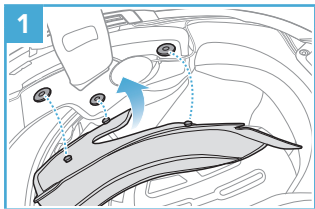
7. Speaker Module Installation



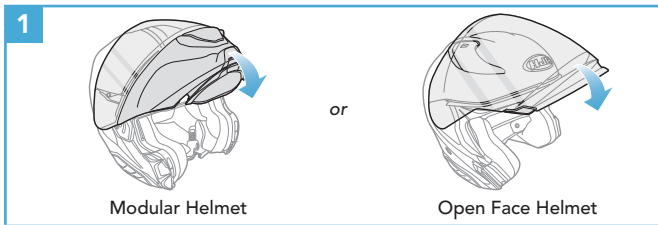
8. Wire Arrangement




9. Cheek Pad Fasten Up



10. Modular Chin Bar / Open & Full Face Visor Closing



Icon Legend

 Tap button the specified number of times

 Press and Hold button for the specified amount of time



"Hello"

Audible prompt

Basic Operations

Powering On



Powering Off



Volume Up



Volume Down



Checking the Battery Level

Powering On



Phone Pairing



- ③ Select **SMART HJC 11B** in the list of Bluetooth devices detected.



- The headset will enter the **Phone Pairing mode** automatically when you **initially turn on** the headset.
- For more information on phone pairing, refer to the User's Guide.

Using the Phone

Answer a Call



End a Call



Reject a Call



Voice Dial



Music Control

Play/Pause



Track Forward

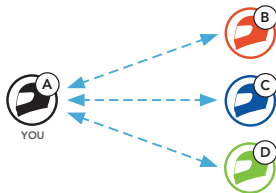


Track Backward



Bluetooth Intercom

Up to three other people can be paired with the headset for Bluetooth intercom conversations.






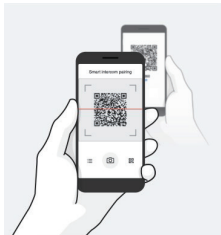
Intercom Pairing

There are two ways to pair the headset.

Using the Smart Intercom Pairing (SIP)

SIP allows you to quickly pair with your friends for intercom communication by scanning the QR code on the **SMART HJC BT App** without remembering the button operation.

- ① Pair the mobile phone with the headset.
- ② Open the **SMART HJC BT App** and tap  (**Smart Intercom Pairing Menu**).
- ③ Scan the **QR code** displayed on your friend (**B**)'s mobile phone.
 - Your friend (**B**) can display the QR code on the mobile phone by tapping  > **QR code** () on the **SMART HJC BT App**.



- ④ Tap **Save** and check that your friend **(B)** is paired with **you (A)** correctly.
- ⑤ Tap **Scan** (📷) and repeat steps 3-4 to pair with **Intercom Friends (C) and (D)**.

Note: The **Smart Intercom Pairing (SIP)** is not compatible with SMART HJC headsets that use **Bluetooth 3.0** or **below**.

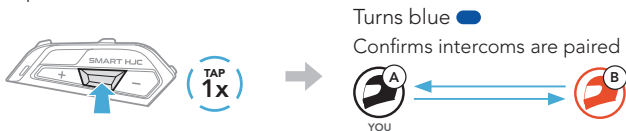
Using the Button



- ① **Each user** simultaneously presses and holds the **TAP Button** for **5 seconds** until users hear the voice prompt, **"Intercom Pairing."**



- ② Tap the **TAP Button** on either headset.

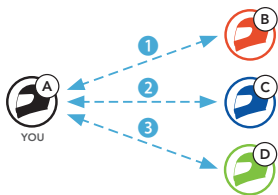


- ③ Repeat the steps above to pair with **other headsets (C and D)**.

Last-Come, First-Served

If the headset has multiple paired headsets for intercom conversations, the last paired headset is set as the **First Intercom Friend**.

Intercom Pairing Order



Last-Come, First-Served



Two-way Intercom

Start/End Conversation with the First Intercom Friend D



Start/End Conversation with the Second Intercom Friend C

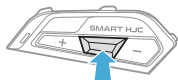


Start/End Conversation with the Third Intercom Friend B



Configuration Menu

Accessing the Configuration Menu

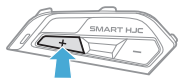


HOLD
10s



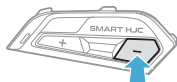
"Configuration menu"

Navigating Between Menu Options



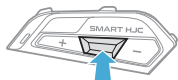
TAP
1x

or



TAP
1x

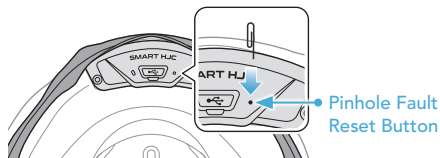
Execute Menu Options



TAP
1x

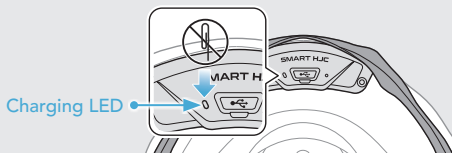
Troubleshooting

Fault Reset

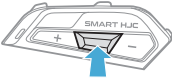





Note:

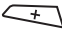










- **Fault Reset** will not restore the headset to factory default settings.
- The charging LED is not the **Pinhole Fault Reset Button**. Do not press it.









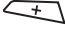



Factory Reset

-  ①   →  "Configuration menu"
-  ②   →  "Factory reset"
-  ③   →  "Headset reset, good-bye"

Quick Reference

TYPE	OPERATION	BUTTON COMMANDS
 Basic Operations	Power on/ Power off	     
	Volume up/Volume down	 or  
 Mobile Phone	Answer phone call	 
	End phone call	 
	Reject phone call	 
	Voice Dial	 

TYPE	OPERATION	BUTTON COMMANDS
 Intercom	Intercom pairing	 
		 
 Music	Play/Pause music	 
	Track forward	 
	Track backward	